



DP-FOBI Launch Event

May 22, 2026 12:00-13:30

Doctoral Programme for Advancing Forest-Based Bioeconomy (DP-FOBI)



Co-funded by
the European Union



FORESTS AND BIOECONOMY
DOCTORAL PROGRAMME

DP-FOBI Launch Event

We will introduce the DP-FOBI Doctoral Programme, its research themes, training framework and opportunities for collaboration as well as the recruitment process. Our guest speaker, CEO **Saara Suurla** from [SpringDNA](#), will talk about moving from research to action.

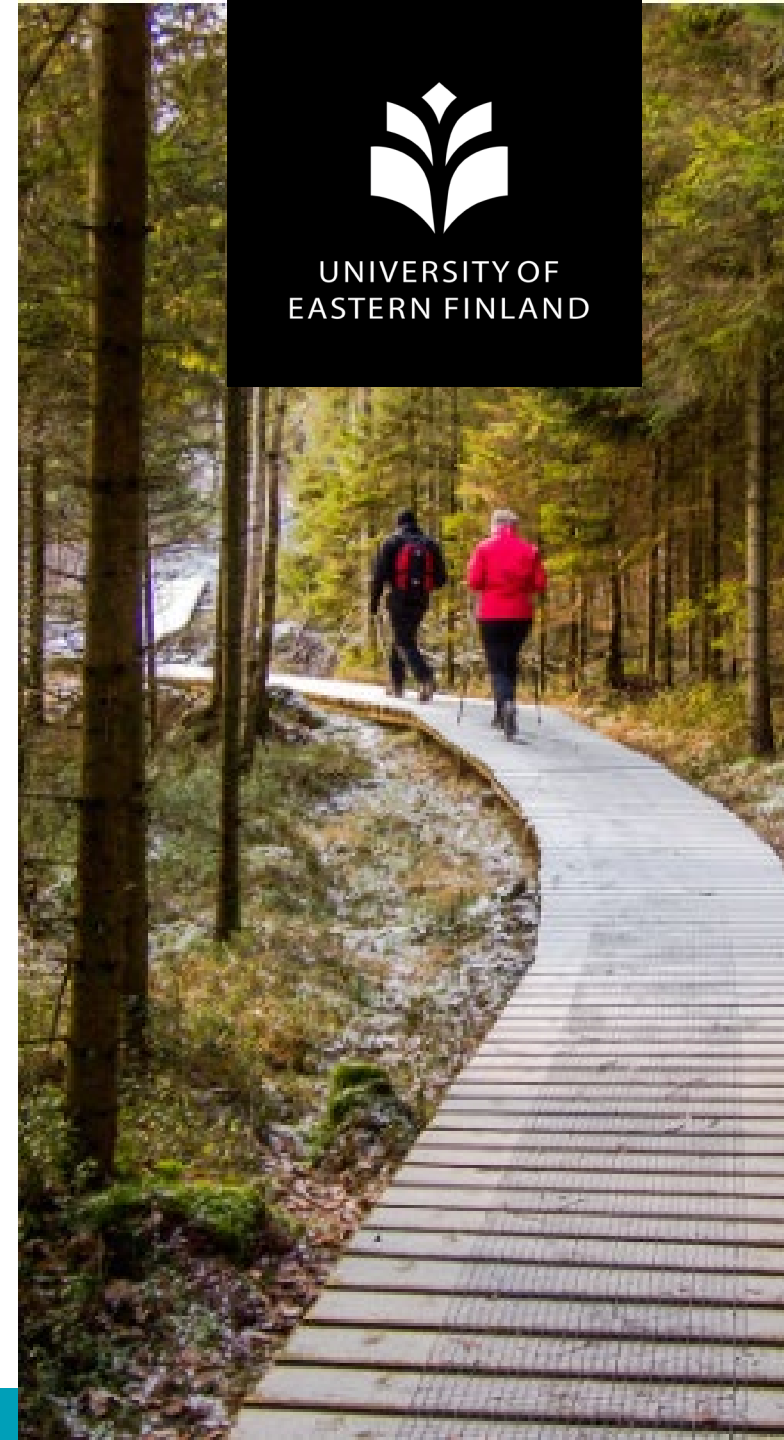
We warmly welcome you to join us and be part of shaping the next generation of forest-based bioeconomy experts!

Doctoral Programme for Advancing Forest-Based Bioeconomy – DP-FOBI
HORIZON MSCA-2025-COFUND

UEF// University of Eastern Finland



UNIVERSITY OF
EASTERN FINLAND





DP-FOBI - Key facts

Funding scheme: MSCA COFUND Doctoral Programme

Number of positions: 15 doctoral candidates

Application period: June 11 – August 10, 2026

Employment duration: 48 months (full time)

Mobility: international mobility required (MSCA rules apply)

Project duration: April 2026 – March 2031

Total budget 4 187 177,00 €

- EU contribution: 2 376 000,00 €
- Own resources: 1 811 177,00 €



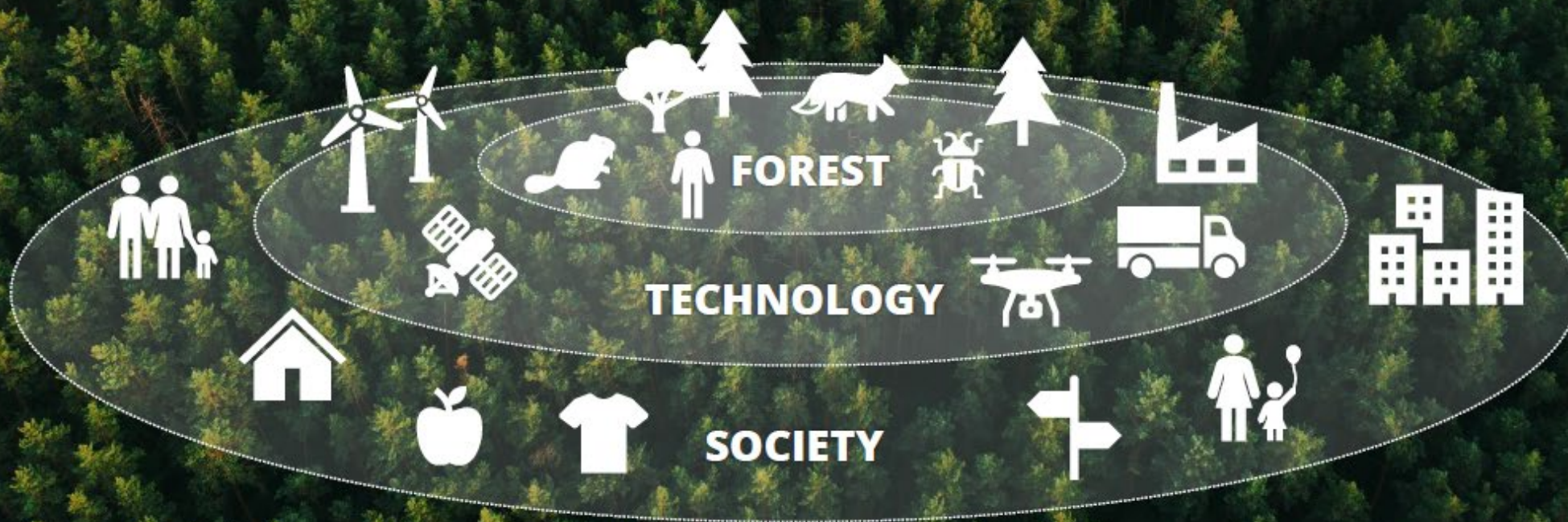
Marie
Skłodowska-Curie
Actions

15 doctoral candidates will be recruited: for four-year positions :
Forest Sciences 5, Chemistry 2, Geographical and Historical Studies 1,
Law School 1, Institute of Public Health and Clinical Nutrition 1,
School of Humanities 2, Business School 3. **All UEF faculties are
involved**

27.5.2026

Multidisciplinary FOBI Research Community

The Forests and Bioeconomy research community explores and adds to our scientific understanding of the changes in society, while striving to develop forest-based solutions for the benefit of humanity – by showing respect for the planetary sustainability.





DP-FOBI programme

- focus on **research-based solutions for a sustainable forest-based bioeconomy**
- interdisciplinary structure
- diverse dimensions of the forest-based bioeconomy to advance solutions that support planetary sustainability
 1. understanding and advancing resource-efficient, climate-smart wood-based value chains
 2. promoting non-extractive forest use, including immaterial value creation and novel NTFP-based innovations
 3. understanding and facilitating commercialisation of novel solutions.





DP-FOBI research themes

■ **Forest inventory and ecosystem modelling**

- Coupling Artificial Intelligence and Simulation-Optimization for Numeric Forest Management Planning
- Multi-Temporal Laser Scanning for Characterizing Tree Structure, Growth, and Wood Quality
- Dead wood dynamics in Fennoscandian forests
- European landscape-level assessment and modelling of forest plantations' growth dynamics and ecosystem services
- Multisource approach for mapping canopy and habitat composition in boreal forests





DP-FOBI research themes

Novel forest-based products

- Bioactivity of biomass-derived chemical fractions in material applications
- The efficient enzymatic conversion of biomass to bio-based compounds
- Nutritional, functional, and business potential of Finnish forest-based resources
- Sustainable innovation and IPR law





DP-FOBI research themes

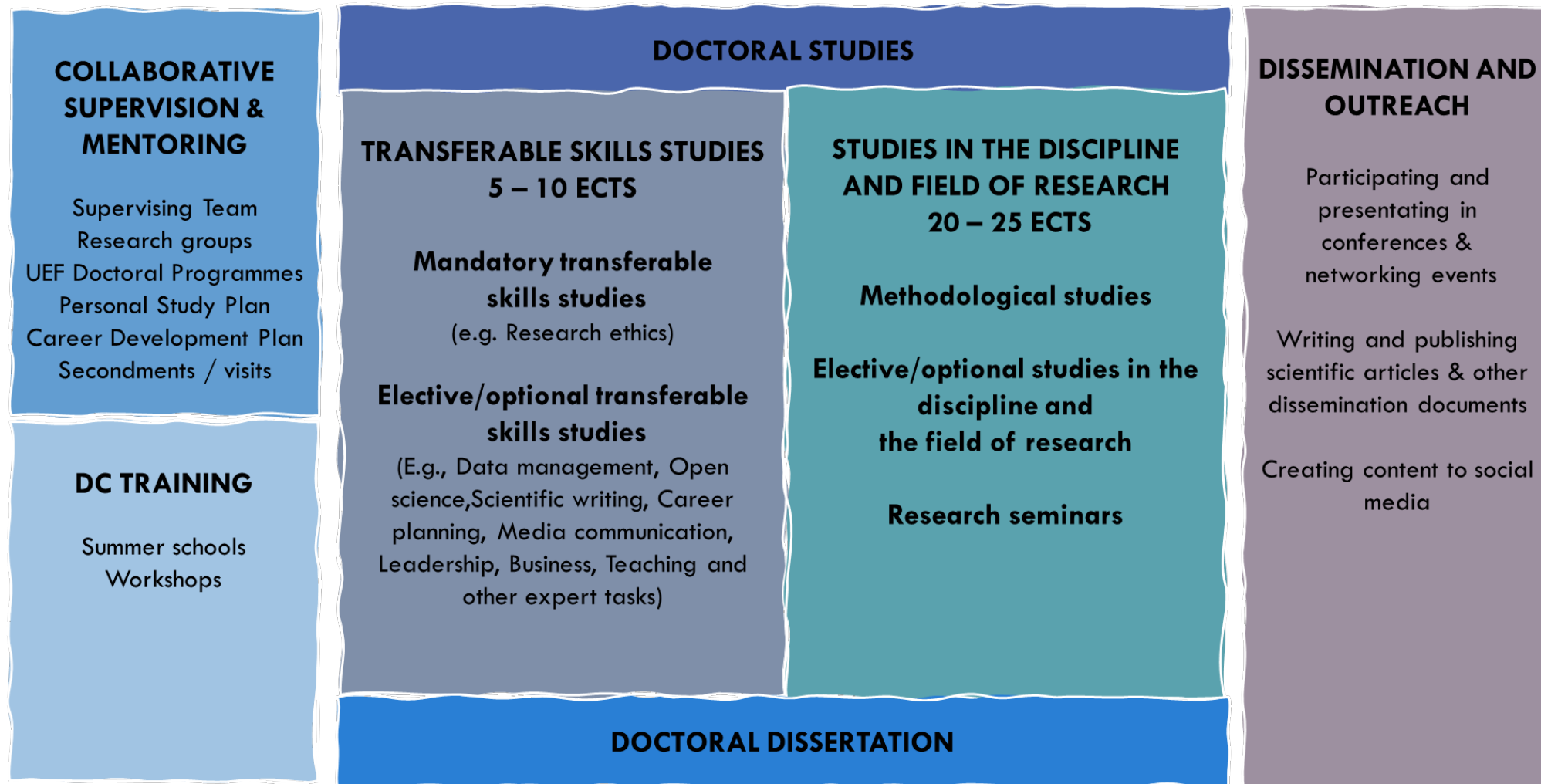
■ Market behaviour in bioeconomy

- Sensory marketing to promote sustainable consumer choices
- Strategic orientations driving bioeconomy transition in forest-based SMEs
- Behavioural biases in the adoption of bio-based innovations in the forest sector
- Sustainability assessment models for forest-based businesses
- Contested conceptualizations of forest in bioeconomy-related discourses
- Environmental Discourses and the Spread of Multilingual (Dis)information in Social Networks





Doctoral education in DP-FOBI



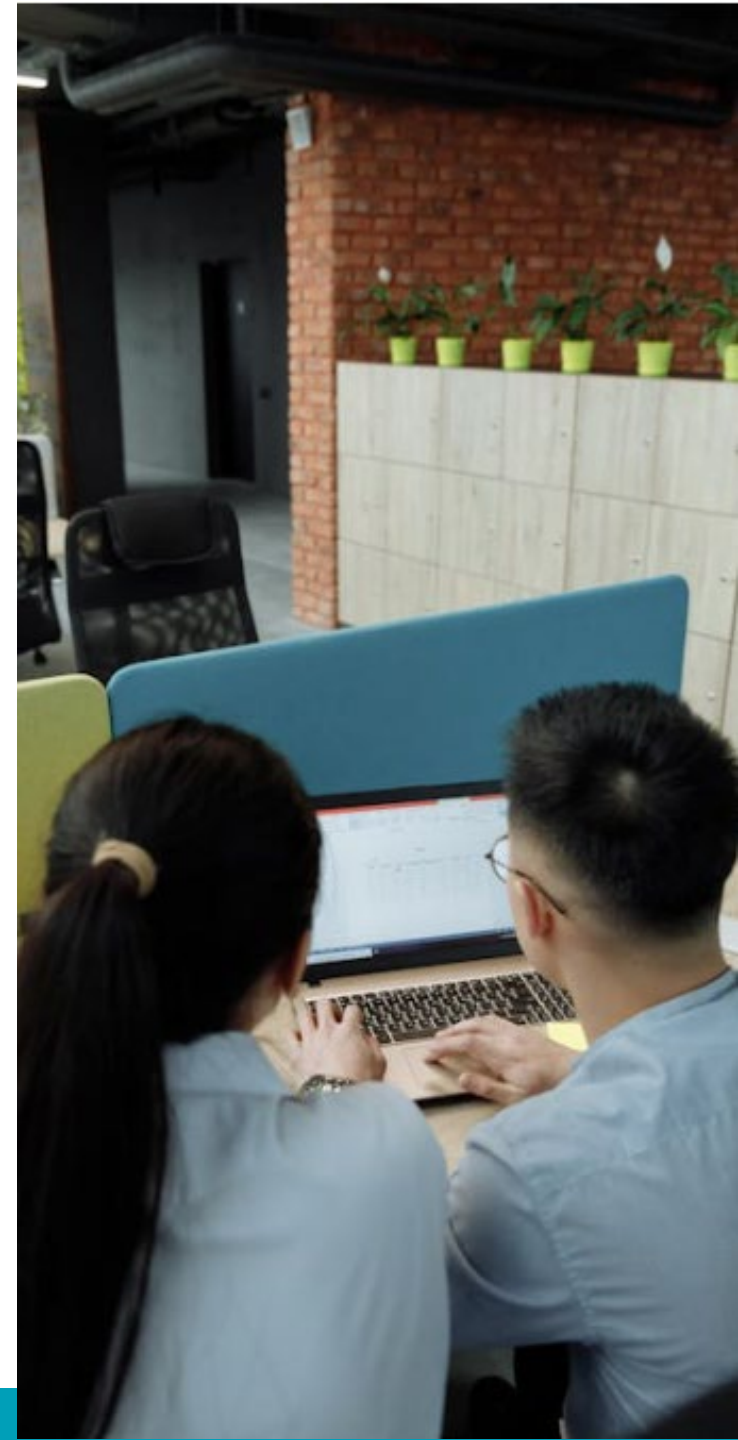


Customised DP-FOBI training

This training focuses on knowledge transfer between DCs, supervisors/mentors, companies, and other stakeholders.

Bi-annual DP-FOBI workshops (total of 6): Research exchange and network building.

The objective is to provide a dynamic platform for doctoral researchers to present their research, receive expert feedback and engage in peer learning.

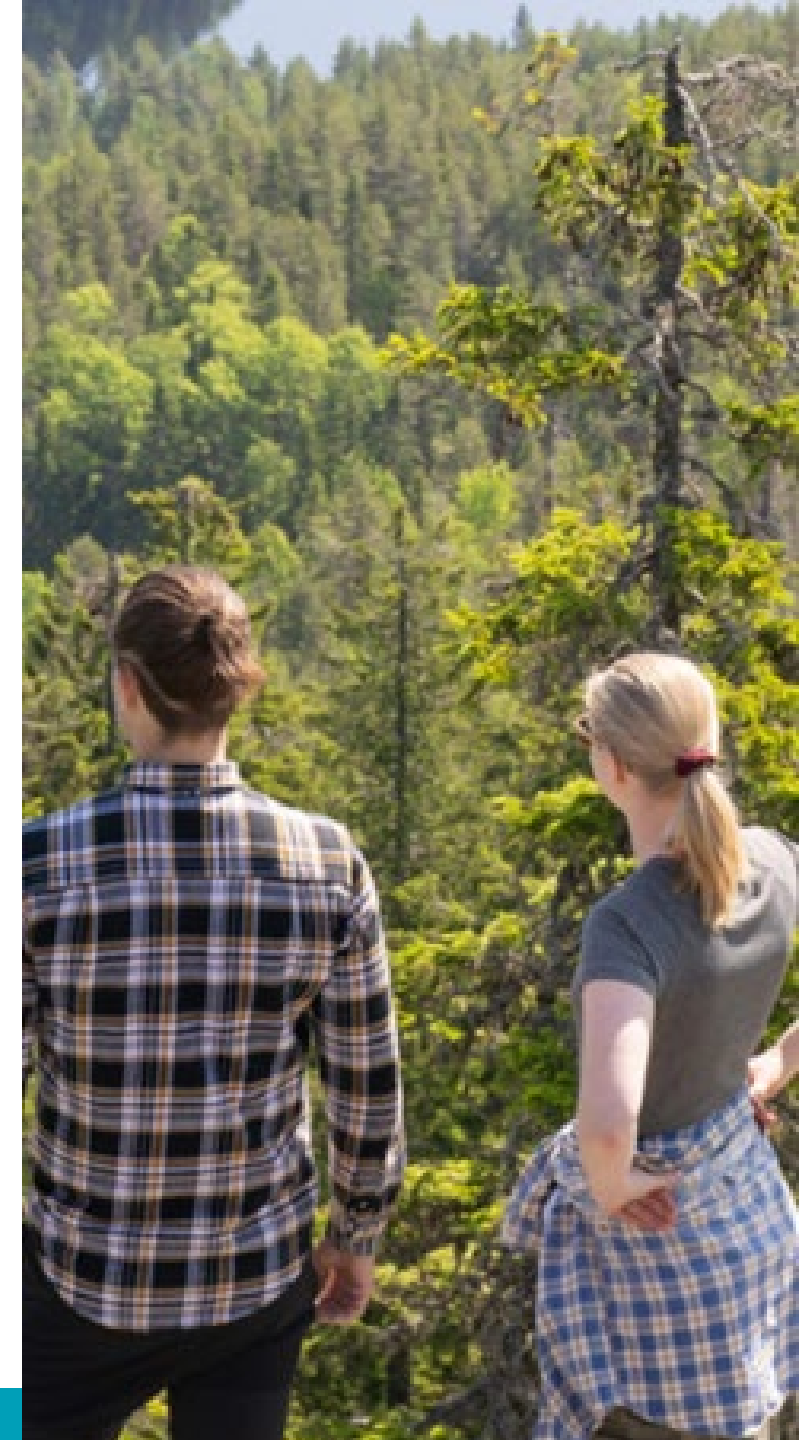




Customised DP-FOBI training

First Summer school: Methods of interdisciplinary and intersectoral collaboration

The objective is to establish a robust methodological foundation for interdisciplinary and intersectoral collaboration among the 15 doctoral researchers and relevant partners.





Customised DP-FOBI training

Second Summer school: Forest-based bioeconomy hackathon

The objective is to immerse doctoral researchers in real-world problem-solving within the forest-based bioeconomy sector.





Customised DP-FOBI training

Third Summer school: Social lab with stakeholders

The objective is to equip DCs with skills to collaborate with multiple stakeholders and to translate their own research into impactful, future-oriented solutions.





Customised DP-FOBI training

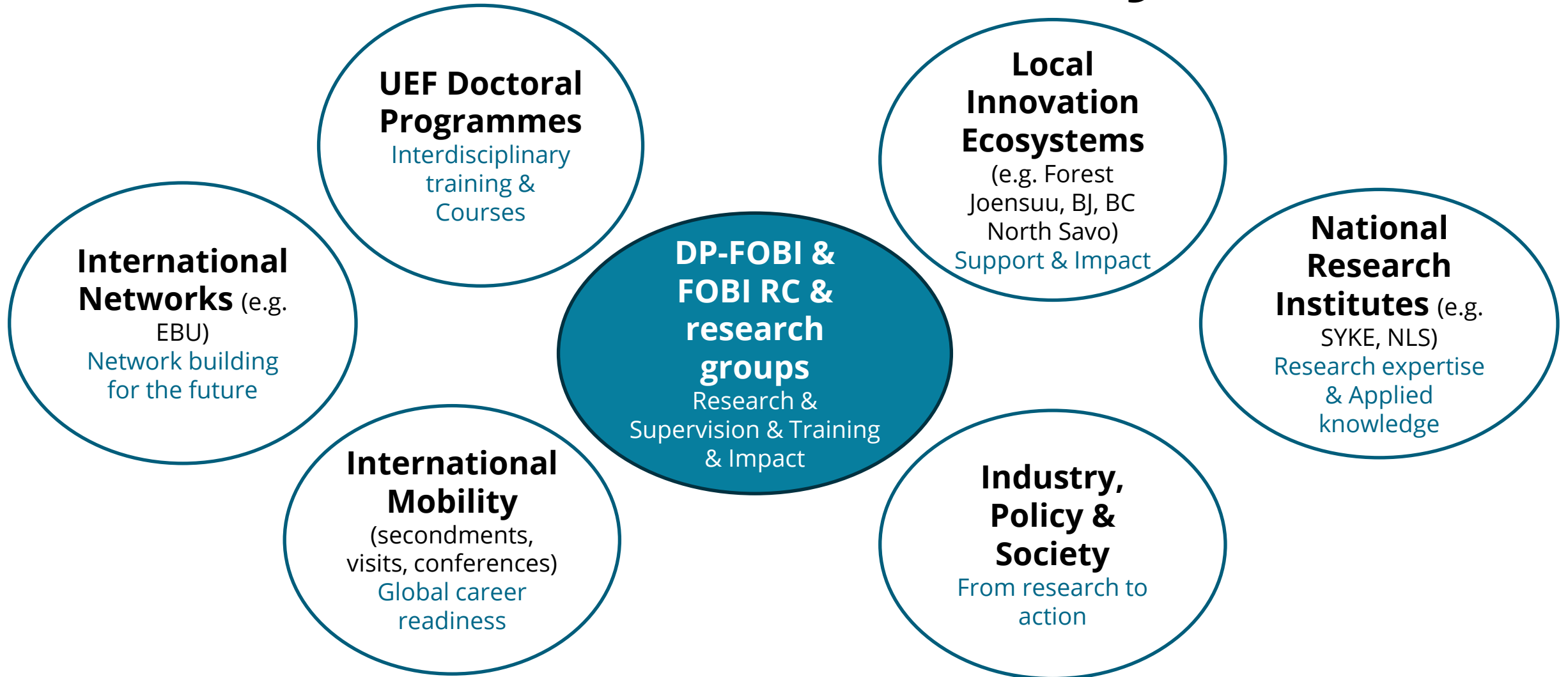
Workshop: Intellectual Property Rights (IPR) and Commercialization

The objective is to develop entrepreneurial competencies and strategic understanding of IPR and research valorisation.





DP-FOBI collaboration ecosystem





Secondments and short research visits

Research projects also include **secondments** (min. 3 months) and/or **short research visits** to universities, research institutes and industry collaborators





Dissemination and exploitation

Target group	Message / objective	Tools and channels
Scientific community	Presenting and discussing the results, as well as testing the methodologies and case-studies proposed	Seminars, symposiums, scientific conferences (e.g. EBSF, EUBCE, IUFRO), webinars, lectures, during secondments, scientific publications, profile in ResearchGate or similar, YUFE network
The forest / bioeconomy industry	Promoting results, raising awareness of potential business opportunities	Networking events, summer schools/workshops, conferences attended by industry (e.g. IUFRO, EUBCE), industrial fairs, industry magazines, talks, social media (e.g. LinkedIn)
Policy advising bodies policy-makers, European Commission	Presenting results, making recommendations, providing input to policy making	Summary reports, recommendations, presentations to decision-makers, press releases, dissemination documents, project website
Forest-owners, consumers, general public	Research results and impact in lay language, engaging them in (co-)research activities and science events	Project website, social media (incl. blogs, podcasts), press releases, media interviews, events for citizens, e.g. Researcher Night, SciFest, Science Cafe
Children, schools	Encouraging children to get to know science and forest-based value	Collaboration with LUMA-center and Children's University, school visits, SciFest



Recruitment principles

- Recruitment process is **open, transparent, merit-based**, and aligned with the European Charter for Researchers and the Code of Conduct for the Recruitment of Researchers.
- Selection is based solely on **academic merit and potential**, ensuring equal opportunity for all applicants regardless of background or personal characteristics
- Applicants will **select from a broad range of interdisciplinary research topics** specified by the supervisors and described in the DP-FOBI website. They are encouraged to adapt or refine the proposed topics to align with their own research interests that they will initially disclose in their motivational letter, ensuring flexibility and diversity in research directions.





Who can apply?

Applicants must meet the following conditions **at the time of the call deadline**:

- 1) **a higher university degree**, a relevant higher professional degree (UAS Master's), or a relevant foreign qualification that provides eligibility for equivalent higher education studies in the country concerned
- 2) **must not already hold a doctoral degree**. Applicants who have successfully defended their doctoral thesis but have not yet been formally are also ineligible.
- 3) **must not have resided or carried out their main activity** (work, studies, etc.) **in Finland for more than 12 months in the 36 months immediately preceding the call deadline** (August 10)
- 4) **must meet the requirements of UEF's doctoral programmes**





Application requirements

- All application materials must be submitted in **English** via the UEF electronic recruitment system VARBI.
 - A complete application includes:
 - Completed **electronic application form**
 - **Certified copy of the Master's degree diploma** (or equivalent proof if diploma is pending) in relevant field
 - **Curriculum vitae (CV)**
 - Electronic copy of **Master's thesis**
 - two-page **summary of the Master's thesis** in English
 - **Ethics Self-Assessment form**
 - **Motivational letter** (maximum of three pages)
 - **Proof of English proficiency** if not evident from academic credentials
- **Provided templates must be followed.** Applications not adhering to the format or language requirements will not be considered.





Selection process step by step

YEAR 2026					YEAR 2027
CALL OPEN	ELIGIBILITY & ETHICS CHECK	EXTERNAL REVIEW	INTERVIEWS	FINAL DECISION	APPOINTMENTS & ENROLLMENTS
JUNE 11 AUGUST 10	AUGUST	SEPTEMBER OCTOBER	OCTOBER NOVEMBER	NOVEMBER DECEMBER	JANUARY - MARCH

A P P E A L P O S S I B I L I T I E S

At the time of signing the employment contract, recruited researchers must be enrolled in a [doctoral programme at the University of Eastern Finland](#) leading to the award of a doctoral degree, and must meet the requirements of that doctoral programme. The doctoral programme related to each PhD research theme is named in the corresponding theme description.



External review

Review panel for each application is composed of three independent, unbiased external experts. The reviewers will evaluate candidates' 1) **qualifications and merits** (based on diplomas, CV) and 2) **motivation and research fit** (based on motivational letter)

SCORING	EVALUATION CATEGORY	FOCUS OF ASSESMENT IN EACH EVALUATION CATEGORY
Maximum score is 5 points in both categories	CANDIDATE'S MERITS Weight 50%	Academic qualifications (course grades and the Master's thesis grade) 20% Suitability of the previous degree yo DP-FOBI research theme (20%) Research experience in the chosen research area topic (20%) International experience (20%) Interdisciplinary and Intersectoral experience (20%)
	MOTIVATIONAL LETTER Weight 50%	Commitment and motivation to pursue PhD studies (20%) Understanding of the chosen or suggested research topic (20%) Understanding of the research methods used in the chosen or suggested research topic (20%) Understanding of the interdisciplinary and intersectoral aspects in doctoral training (20%) Prospect of completing PhD studies in the given time frame (20%)



Interviews

Interviews will be conducted online. Interview panel includes an HR expert, an intersectoral expert, and two independent scientific experts outside UEF.

Evaluation criteria

SCORING	EXCELLENCE OF	FOCUS OF ASSESMANT IN EACH EVALUATION CATEGORY
Maximum score is 5 in every category.	RESEARCH PRESENTATION Weight 50%	Presenting Master's thesis summary in the given time frame (20%) Articulation of research purpose and aims for the chosen or suggested research topic (40%) Mastering of theory, methods, and ethics for the chosen or suggested research topic (40%)
	MOTIVATION Weight 30%	Motivation for PhD studies and for the chosen or suggested topic (60%) Assimilation of learning goals for PhD studies(20%) Career plans for future (20%)
	LANGUGAGE PROFICIENCY Weight 20%	English language proficiency (100%)



Co-funded by
the European Union



FORESTS AND BIOECONOMY
DOCTORAL PROGRAMME



UNIVERSITY OF
EASTERN FINLAND

**Welcome to join
our application info Webinar
on Wednesday 24 June, 2026**



Follow us

- DP-FOBI website:
<https://sites.uef.fi/dp-fobi/>



- DP-FOBI LinkedIn





UNIVERSITY OF
EASTERN FINLAND

DP-F  **BI**

FORESTS AND BIOECONOMY
DOCTORAL PROGRAMME

uef.fi/dp-fobi

