



UNIVERSITY OF
EASTERN FINLAND

2020-2021

**UEF//
SMART
START**

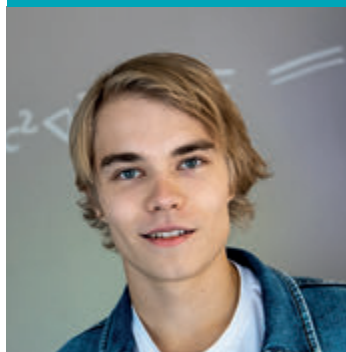
MSC EUROPEAN FORESTRY

Checklist for new students

Apply for a residence permit
migri.fi



Get to know the new student orientation material
kamu.uef.fi/new-student



Check course information on
webodi.uef.fi

Find online guides in
kamu.uef.fi

Register as a student at UEF in
studyinfo.fi

Apply for housing
joensuunelli.fi in Joensuu, and
kuopas.fi in Kuopio



Other important websites

- ▶ Student Union (ISYY) **isyy.fi**
- ▶ Library **uef.fi/kirjasto**
- ▶ IT Services **uef.fi/tipa**
- ▶ Campus restaurants **uef.fi/en/campus-restaurants**
- ▶ Finnish Student Health Services (YTHS) **yths.fi**
- ▶ Language Centre (access with UEF account)
uef.fi/kielikeskus/opintoyhteiso

I can – I am a Master in European Forestry!

WHY EUROPEAN FORESTRY?

The MSc European Forestry programme provides you with an ideal opportunity to get a high-quality education, to network with professionals from all over the world and to travel across Europe. Our accredited two-year 120 ECTS course-based programme is well organised and you can rely on solid support from the MSc European Forestry secretariat with regard to practical arrangements.

During the two years you will be spending with us, you will study at least at two top-quality European universities, participate in an amazing European Forestry field course that takes you across Europe and have an internship in a forest company or institution which familiarises you with working life. At the end of our programme, you will be awarded a double degree which means that you will be awarded a Master of Science (Agriculture and Forestry) degree by the University of Eastern Finland and a Master of Science degree by your second-year host university.

PROGRAMME FACTS

MSc European Forestry (MSc EF) is a top class taught Erasmus+: Erasmus Mundus Joint Master Degree Programme (EMJMD) in the field of forest sciences. The quality of our programme is acknowledged by the European Commission, which awarded the MSc European Forestry Erasmus Mundus status for the years 2004–2019 and for the years 2019–2023.

In MSc EF, six European top-class forestry universities collaborate intensively to offer joint study modules in addition to their existing curricula. The MSc EF Consortium consists of the following institutions: the University of Eastern Finland (coordinator); AgroParisTech, France; the University of Freiburg, Germany; the University of Lleida, Spain; the University of Natural Resources and Life Sciences Vienna, Austria and Transilvania University of Braşov, Romania. In addition, Associated Partner HEIs in Brazil, Canada and China and Associated Industrial and Associated Scientific Partners contribute to the programme delivery.

Our programme has been running since 2001, and we are proud to say that our graduates have exceptionally impressive careers, many of them attributing their career success to our programme! Our graduates are indeed amongst the most sought after in the field by national and international employers alike. The majority of our graduates are currently employed around the world by organisations such as:

- Forest and nature management agencies and governmental bodies
- Research institutions

- Forest enterprises in paper and pulp industries and saw milling
- Environmental NGOs.

”

Definitely, the European Forestry programme has changed my life. In addition, the opportunity to live in Europe and especially in Finland has opened my mind and a world of opportunities. I still sometimes think it was a dream these amazing two years, where I could gain a lot of knowledge and make lifetime friends.

ALAN FERREIRA BATISTA, BRAZIL

LEARNING OBJECTIVES

Our programme is a two-year interdisciplinary programme that provides academic education in the field of sustainable resource management with an emphasis on current bioeconomy issues. MSc EF offers a new approach to forestry and nature management markets and it connects the increasing number of forest-related issues with a European dimension at international as well as national levels.

The objective of the MSc EF programme is to educate professionals who have a thorough understanding of a sustainable forest bioeconomy as well as the European business culture. The curriculum is specifically designed to take into consideration the needs of potential employers and therefore our graduates are highly valued by national and international agencies, governmental bodies, NGOs, research institutions and timber, paper and pulp enterprises.



Welcome to Joensuu from JMYO!

JMYO stands for Joensuu MetsäYliOppilaat and we are student association for all forestry students in our university. Our mission is to supervise interests of our members, act between staff and students and organize sauna-evenings, parties and other fun stuff. We have also some international events like international dinner evenings and bicycle trip. Our activities are great chance to get to know Finnish students. Almost every student in our faculty is member and international students are welcome, of course! In start of fall, our board will stage an opening where we tell you more!

See u then!

Joensuu Forest Student Association

Board member and international manager, Riku Tarvainen



Student tutors' greetings

My warmest congratulations to all of you for securing the right to study in the school of forest sciences. You have made a wonderful choice in applying to the University of Eastern Finland! My name is Veronika and I have just finished the first year of my bachelor studies in forestry. This has been a great adventure full of warm unforgettable memories and I truly hope that your experience here is going to be just as positive. I am incredibly happy to be your tutor for the beginning of the upcoming academic year. See all of you wonderful new students soon and let's make your first autumn here the very best!



Veronika Knigina

email. veronkni@student.uef.fi

tel. +358 40 326 3482

Warm greetings and congratulations to the new accepted students of the school of forest sciences here at UEF! My name is Sami and will be tutoring you alongside my colleague Veronika. I'm a graduate student in border studies and anthropology, but I have been a tutor for the faculty of natural sciences and forestry for many years now. Networking with and tutoring forestry and wood materials science students has been a great experience and I can't wait to meet you all and forge new everlasting experiences together!



Sami Tanskanen

email. samitan@student.uef.fi

tel. +358 440 13 7337

Schedule of the first weeks

WEEK 1

5 August (Wednesday)

Online session via Zoom. Participate in the one that suits you best. Invitation links will be sent later.

09.00-11.00 Welcoming words and introduction to MDP in European Forestry (*Timo Tokola and Marjoriitta Möttönen, UEF*)
Practical issues, aims and evaluation (*Marjoriitta Möttönen, UEF*)
Introduction to Trends in European Forestry course (*Timo Tokola and Marjoriitta Möttönen, UEF*)

19.00-21.00 The same content as above

WEEK 2

10 August (Monday)

Day's topic:

Nature and history of European forestry and forest resources in Europe (*Heinrich Spiecker, University of Freiburg*)

Online sessions via UEF Zoom (Invitation links will be sent later): Participate in the one that suits you best.

09.00-10.00 or 20.00-21.00

11 August (Tuesday)

Day's topics:

Forest resources in Europe, growth trends in European forests and selected topics in forest management, (*Heinrich Spiecker, University of Freiburg*)

Green economy and how to increase productivity? (*Heinrich Spiecker, University of Freiburg*)

Online sessions via UEF Zoom (Invitation links will be sent later): Participate in the one that suits you best.

09.00-10.00 or 20.00-21.00

12 August (Wednesday)

Day's topics:

Economics of multiple use forestry (*Jouni Pykäläinen, UEF*)

The future of European forest-based sector: Major trends and scenarios (*Janni Kunttu, EFI*)

Relations between society and forests (*Jukka Tikkanen, UEF*)

13 August (Thursday)

Day's topics:

Ecology and biodiversity in boreal forests (*Jari Kouki, UEF*)

Forest nutrition and forest flora in boreal forests (*Elisa Männistö and Nicola Kokkonen, UEF*)

Boreal forest management (*Heli Peltola, UEF*)

14 August (Friday)

Day's topic:

Disturbances and carbon balances of boreal forests (*Frank Berninger, UEF*)

Make the test in the Moodle environment based on the topics of the week.

WEEK 3

17 August (Monday)

Day's topics

Why is it important to study the future of forest usage and how can it be done? (*Teppo Hujala, UEF*)

Key role of forests for moving towards a circular bioeconomy (*Marc Palahí, EFI*)

Sustainable bioeconomy (*Pekka Leskinen, EFI*)

18 August (Tuesday)

Day's topics

Forests, forestry and climate change (*Mérim Fournier, AgroParisTech and Viorel Blujdea, Transilvania University of Braşov*)

Carbon and climate change (*Mérim Fournier, AgroParisTech and Viorel Blujdea, Transilvania University of Braşov*)

*Online sessions via app managed by AgroParisTech (Invitation links will be sent later):
Participate in the one that suits you best.
09.00-10.00 or 20.00-21.00*

19 August (Wednesday)

Day's topics

French forestry (*Mériem Fournier, AgroParisTech*)

Romanian forests and forestry (*Viorel Blujdea and Lucian Curtu, Transilvania University of Braşov*)

*Online sessions via app managed by AgroParisTech (Invitation links will be sent later):
Participate in the one that suits you best.
09.00-10.00 or 20.00-21.00*

20 August (Thursday)

Day's topics

Introduction to geographical information systems in forestry (*Timo Tokola, UEF*)

Remote sensing supported forest management in Finland (*Mikko Vastaranta, UEF*)

21 August (Friday)

Day's topic

Management of State-owned multiple-use forests in Finland (*Jyrki Kangas, UEF*)

Make the test in the Moodle environment based on the topics of the week.

WEEK 4

24 August (Monday)

Day's topics

Mediterranean forestry (*Lluís Coll, University of Lleida*)

Multifunctional forestry in mountain regions (*Harald Vacik, University of Natural Resources and Life Sciences, Vienna*)

Preparation for interaction session Conservation vs. productivity, You have to participate in one session so in A, B, C, D or E

Online session A via ZOOM by BOKU (Invitation links will be sent later): 20.00-21.00

25 August (Tuesday)

Preparation for interaction session Conservation vs. productivity

Online session B, C and D via ZOOM by BOKU (Invitation links will be sent later):

A: 09.00-10, B: 10.00-11.00 .00 or C: 20.00-21.00

26 August (Wednesday)

Day's topics

Logging operations and harvesting technology (Heli Kymäläinen, UEF)

New trends for pulp production (Antti Haapala, UEF)

Eno Energy Cooperative and Forestry Centre (Urpo Hassinen, Forestry Centre)

27 August (Thursday), online via Zoom

Day's topics

Bioenergy and sustainability (Blas Mola, UEF)

Bioenergy in Finland and in Sweden (Blas Mola, UEF)

Make the test in the Moodle environment based on the topics of the week.

Online session via UEF Zoom (Invitation links will be sent later): 20.00-21.00

Participate in the one above or in the one on Friday morning.

28 August (Friday)

Online session via UEF Zoom (Invitation links will be sent later): 09.00-10.00

The course includes the following parts:

1. Recorded lectures for each day (found in Moodle site, the link will be provided later)
2. Online sessions (participate in the online sessions marked in the programme)
3. Three tests in Moodle site (make one after each week)
4. Assignments (5 assignments, see details below)

The final grade (1-5) includes the following assignments:

1. Project work (*Heinrich Spiecker, University of Freiburg*): 15%
2. Green economy and how to increase productivity? (*Heinrich Spiecker, University of Freiburg*): 15%
3. Carbon and climate change (*Meriem Fournier, AgroParisTech and Viorel Blujdea, Transilvania University of Braşov*): 15%
4. Conservation vs. productivity (*Lluís Coll, University of Lleida and Harald Vacik, University of Natural Resources and Life Sciences, Vienna*): 15%
5. Learning diary: 1 500-1 650 words (500-550 words for each week, 40%) (*Timo Tokola, UEF*)

To pass the course the above assignments and the tests in the Moodle site have to be submitted via Moodle **by 28 August**. The deadline for the learning diary is **4 September**. Instructions for the assignments will be given during the online sessions.



MORE INFORMATION AT
www.europeanforestry.eu

Guidance and help

Programme coordinator:

Marjoriitta Möttönen, D. Sc (Agr. and For.)

email: marjoriitta.mottonen@uef.fi

office: Borealis 365 (3rd floor)

mobile: +358 50 442 3031

Leader of the programme:

Timo Tokola, Professor

email: timo.tokola@uef.fi

office: Borealis 363 (3rd floor)

mobile: +358 50 401

Degree structure

1. YEAR 60 ECTS	Academic year 2020/2021: Obligatory and elective studies	Credits (ECTS)	Location
Aug-Apr	Module 1		Joensuu, Finland
	Trends in European forestry	5	
	Academic skills in forest sciences	1.5	
	Research methodology in forest sciences	3.5	
	Global virtual seminar	2	
May-July	Module 2		Spain, France, Germany, Austria and Romania
	European forestry field course	8	
	Applied period in forest institutions	10	Preferred Consortium country
Sep-Apr	Elective courses	30	Joensuu, Finland + online courses

2. YEAR 60 ECTS	Academic year 2021/2022: Obligatory and elective studies, Master thesis	Credits (ECTS)	Location
Autumn & spring semester	Module 3		
	Obligatory and elective courses	30	MSc EF partner university according to the student's individual study track (not UEF)
	Master's thesis and thesis seminar (online)	30	
	European forestry forum and graduation ceremony	0	Joensuu, Finland

FIRST YEAR

Autumn semester

All the first semester studies will take place in Joensuu, Finland. Studies begin in early August with welcoming and orientation, during which you bond with your new classmates and have all the essential practicalities organised, such as registering to the University of Eastern Finland and opening a bank account. During the autumn semester you will attend the courses included in Module 1 as well as elective courses.

Spring semester

The courses in Module 1 and your elective courses continue in Joensuu until 30 April. After Joensuu, you will attend the European Forestry Field Course which is included in Module 2. This course begins in early May and takes you on a journey across Europe (Austria, France, Germany, Romania and Spain). All the travels between countries and accommodation, as well as many of the meals, are provided to the students during the course.

After the European Forestry Field Course, you will travel to your country of choice for your Applied Period in Forest Institutions, which is included in Module 2. During the first semester, the MSc European Forestry Secretariat will help you find a suitable internship placement in Europe, Canada, China or Brazil. The Applied Period lasts a minimum of two months, during which you will have a local supervisor that will guide you through the internship and give support both in practical and academic matters.

SECOND YEAR

The second-year studies (Module 3) are carried out in one of the Consortium Universities in Austria, France, Germany, Romania or Spain, which is chosen already during the previous winter (in January-February 2021).

LIST OF COURSES

Registering for the courses is via WebOodi (<https://weboodi.uef.fi>)

	ECTS
Module 1	12
3513157 Trends in European forestry	5
3513061 Academic skills in Forest Sciences	1.5
3513148 Research methodology in forest sciences	3.5
3513154 Global virtual seminar	2
Elective courses	min. 30
<u>Autumn semester</u>	
3513144 Analysis in forest economics and policy	6
3513142 Basics of wood material science	4
3513127 Current issues in forest conservation and biodiversity	3
3513040 Economics of multiple-use forestry	3
3513170 Forest ecosystem modelling, concepts and applications	2-5
3513055 Forest products mechanics	6
3513165 Foresight methods and applications for the forest sector	5
8020270 Information skills and sources in science and forestry for international students	1
3513065 Silvicultural management of forests for timber production and other ecosystem services	3
3513129 Supply and energy use of lignocellulosic biomass	6
8031003 University study skills	1
<u>Spring semester</u>	
3513019 Bioenergy markets and policies	6
3513150 Co-management of natural resources	5
3510011 Data-driven qualitative methodologies for forest scientists and foresters	5
3513027 Forest information systems	5
3513089 Forest inventory and modeling	8
3513012 Forest pathology and forest microbiology	6
3513169 Forest soil hydrology	3-6
3513135 Innovation management	4
3513124 Literature seminar of forest soil ecology and management	3
3513058 Measurement, scaling and instrumentation	5
3513147 Perspectives to bioeconomy	6
3513155 Spatial optimization and utilization of new data sources in forest planning	3
3513159 Structure and properties of wood-based materials	5
<u>All year</u>	
3513175B Carbon dynamics of forest soils (literature exam)	4
3513174 Forest health management	3

Online courses provided by the University of Lleida (Spain):

Forest dynamics in a global change context: drivers, processes and modelling approaches	5
Introduction to Spatial Statistics: Spatial analysis with R	5
Stand to Continental Forest Health Management	5

Module 2 **18**

3513073 European forestry field course	8
3513158 Applied period in forest institutions	10

Module 3

Advanced Courses	30
3513154 Master's Thesis	30
3513075 MSc European forestry thesis seminar	0
European forestry forum – Job fairs and graduation ceremony	0
min.	120

Academic calendar at UEF

The academic year is based on a two-semester system. The official academic year starts on 1 August and ends on 31 July. However, in the autumn semester lectures are scheduled mainly between September and mid-December, and in the spring semester between early January and May. The Christmas break is about three weeks and during the spring semester, there is a week-long Easter break. There is generally no teaching during the summer and on public holidays.

Check the up-to-date information on <https://kamu.uef.fi/en/student-book/academic-calendar/>.

DATE	EVENT/HOLIDAY
2–4 September 2020	Orientation for new Master's Degree students in Joensuu
15 September 2020	Registration for new students ends
3 September 2019 (in Kuopio)	Opening ceremony of the academic year
7 October 2020	Sports afternoon
16 December 2020 – 6 January 2021	Christmas break
8–14 April 2021	Easter break

Teaching will not be arranged during the opening ceremony, sports afternoon, Independence Day, Maundy Thursday and the First of May.

Save the date! Important events

5 August 2020	Introduction to the programme (online)
10–28 August 2020	Trends in European Forestry (online)
2–4 September 2020	Orientation programme (online)
7 September 2020 – 30 April 2021	Module 1 and elective courses
2 May – 30 May 2020	Module 2: European forestry field course
1 June – 31 July/30 August	Module 2: Applied period in forest institutions

Join us in Facebook

<https://www.facebook.com/europeanforestry/>
<https://www.facebook.com/UEFforest/>

Official hashtag

#MScEF

”

This is the most international environment I've ever been in.

ESTEBAN MONTERO FROM BRAZIL

”

One of the things that treasure the most from my MSc period are the incredible people that I meet, and the life experiences that I got at personal and professional level. There are not enough words to describe all the amazing moments lived over those 2 years.

EMMANUEL DA PONTE CANOVA, PARAGUAY

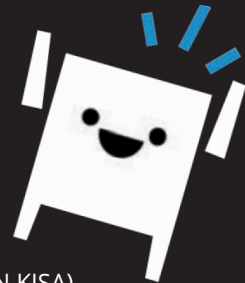
Welcome to Eastern Finland, the University of Eastern Finland and our Student Union!

At first, everything can feel new and confusing, but luckily you have joined a student community where you will surely find all the support you need. Students are a wonderful bunch and we at the Student Union of the University of Eastern Finland (ISYY) will provide you recreational activities, sports services and opportunities to make a difference. We also look out for your interests, so that you can focus on your studies. Your Student Organisation is the link to other students of your field, while the Student Union is the gateway to all the joys and benefits of student life

ISYY may already be familiar to you. Once you have registered to the University, you can pay our membership fee, which also includes the Finnish Student Health Service (FSHS) fee for the autumn semester. We are a service and lobbying organisation for students, and that means You. From students to students, with love.

SOME OF OUR SERVICES AND BENEFITS AVAILABLE TO OUR MEMBERS ARE:

- ▶ Interest advocacy
- ▶ Recreational activities and events
- ▶ SYKETTÄ Sports Services
- ▶ Sports rental equipment and venue hire
- ▶ International Services
- ▶ Communications services (e.g. newsletters)
- ▶ Student card and free student calendar
- ▶ Customer service at our offi
- ▶ Anti-Harassment Contact Persons
- ▶ ISYY Club memberships (including ESN Joensuu and ESN KISA)
- ▶ Support and services for Student Associations (e.g. grants and training)
- ▶ Opportunities to make a difference in the Student Union and the University



Visit our website to learn more about the Student Union, our operations, services, and all the fun and useful things ISYY membership offers you. Our expert staff is also ready to help you anytime in English! If you really get excited about our work, become involved with us!

We wish you the best in your studies this semester and a happy student life!

READ MORE: isyy.fi/en/services/for-new-students



fb|ISYY



@ISYYH



@isyyuef



Itä-Suomen yliopiston ylioppilaskunta

ISYY.FI

ESN for international students

WHO ARE WE?

ESN Joensuu and ESN KISA are part of ISYY dedicated to the international students. We are part of Erasmus Students Network (ESN) with more than 528 local sections in 42 countries. The most important task of the ESN sections is to introduce Finnish culture and lifestyle to international students and give Finnish students an opportunity to gain international experiences by arranging events and activities. We are active in promoting intercultural understanding and social inclusion.

HOW TO BECOME A MEMBER?

Every member of ISYY is an ESN member. You can participate in our events (most of them free of charge) and to our trips, if you are interested in gaining international experiences. Become a board or active member?

Becoming a board or active member gives you the opportunity to participate in the organization of events and decision making. The tasks of board members are the planning and management of events and trips, communication, finding partners and being part of the decision making in the Erasmus student network (ESN). Active members can participate in organizing events and trips. If you wish to participate, please join our meetings, they are open to everyone. Contact us for meeting schedule and location.

EVENTS WE ORGANISE

Kuopio: We organise get to know each other nights, movie nights, International food festivals, SitSits, Wine and cheese nights, Board game nights, Barbeques and picnics, Futsal tournaments, Ice hockey watching, Smoke Sauna and the list is open to your suggestions! We have at least one event per week so check out our facebook!

Joensuu: Would you like to go sledging, hike in Koli or participate in Sitsit? In that case, ESN Joensuu is the right club for you! We organise many events and activities during the academic year, such as, Get to Know Each Other Party, Surviving Winter in Finland, International Dinner and the famous Vappu celebration! We also organise trips to Lapland, Lofoten, St. Petersburg, and Stockholm together with Timetravels! You can buy our ESN cards, overalls and badges at the Student Union office. Come join u

GET INVOLVED!

ESN Joensuu esnjoensuu@esnfinland.eu | esnjoensuu.fi |   @esnjoensuu

ESN Kisa (Kuopio) esnkisa@gmail.com | esnkisa.eu/contact |   @esnkisa



UEF// Digital tools for students

The University of Eastern Finland uses a wide range of digital tools that help you with your studies, work and communication. Using these tools is the best way to stay updated on matters pertaining to your studies and the university.

UEF// KAMU

The Student Handbook **KAMU** is an ever-evolving information bank, where you can find instructions that concern all students, as well as links to various services.

kamu.uef.fi



WEBOODI is your most important tool right from the start! Use WebOODi to register for the academic year, exams and courses, and to make your PSP.

weboodi.uef.fi



YAMMER is an internal communication channel for students and staff. Everyone can join in the discussion, follow different groups and create new ones. The UEF Students group is intended for information that concerns all students, and the Yammer group of your study community is good source of the latest information in your field. It's a smart move to join and follow both of these groups. You can find a link to Yammer on the university's home page



AN EMAIL ACCOUNT is automatically created for you in the form username@student.uef.fi. Log in to your email and other O365 services by entering your username in the form username@uef.fi. You can find a link to student email on the university's home page.

uef.fi

A STUDY COMMUNITY is a community created for and featuring information aimed at students of a specific department, unit, major subject or degree programme. General studies-related information is also shared in the study communities. The study communities are part of the Office 365 environment, and you can log in with your UEF credentials. You can find links to the study communities in Kamu.



TUUDO is a free mobile app (for iOS and Android) via which you can register for courses and exams. In Tuudo, you can also find your study records and automatically created schedule, as well as campus maps and public transport timetables.

tuudo.fi

Feeling lost? Kamu will help you out!

All our latest information can be found in the online student handbook **Kamu**. There is information for all the phases of your studies – from freshman year to graduation. Besides guides, information on our services and UEF news, you can search for tips to improve your study skills, or check what kind of campus activities are available. Please check this online material to ensure your smooth start at UEF. Your orientation programme will start on 31 August 2020. The schedule of the orientation week can be found in

kamu.uef.fi

What to do
after my arrival?
Search
Checklist

How to study at UEF?
Search
Study Skills

What is
an academic quarter?
Search
Glossary

Where are my
fellow students?
Search
Study Communities

I am sick,
what to do?
Search
Health Care

Are there restaurants
on campus?
Search
Lunch

What happens
during the summer?
Search
Summer School

IT problems?
Search
IT Services

What type of
sports can I do?
Search
Sports