



MSc European Forestry

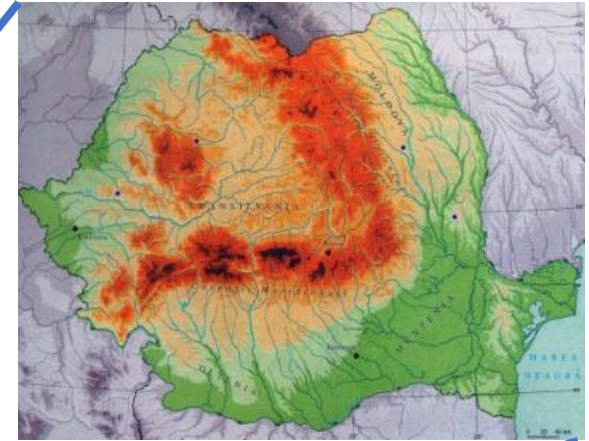


**Transilvania
University
of Brasov**

**FACULTY OF SILVICULTURE
AND FOREST ENGINEERING**

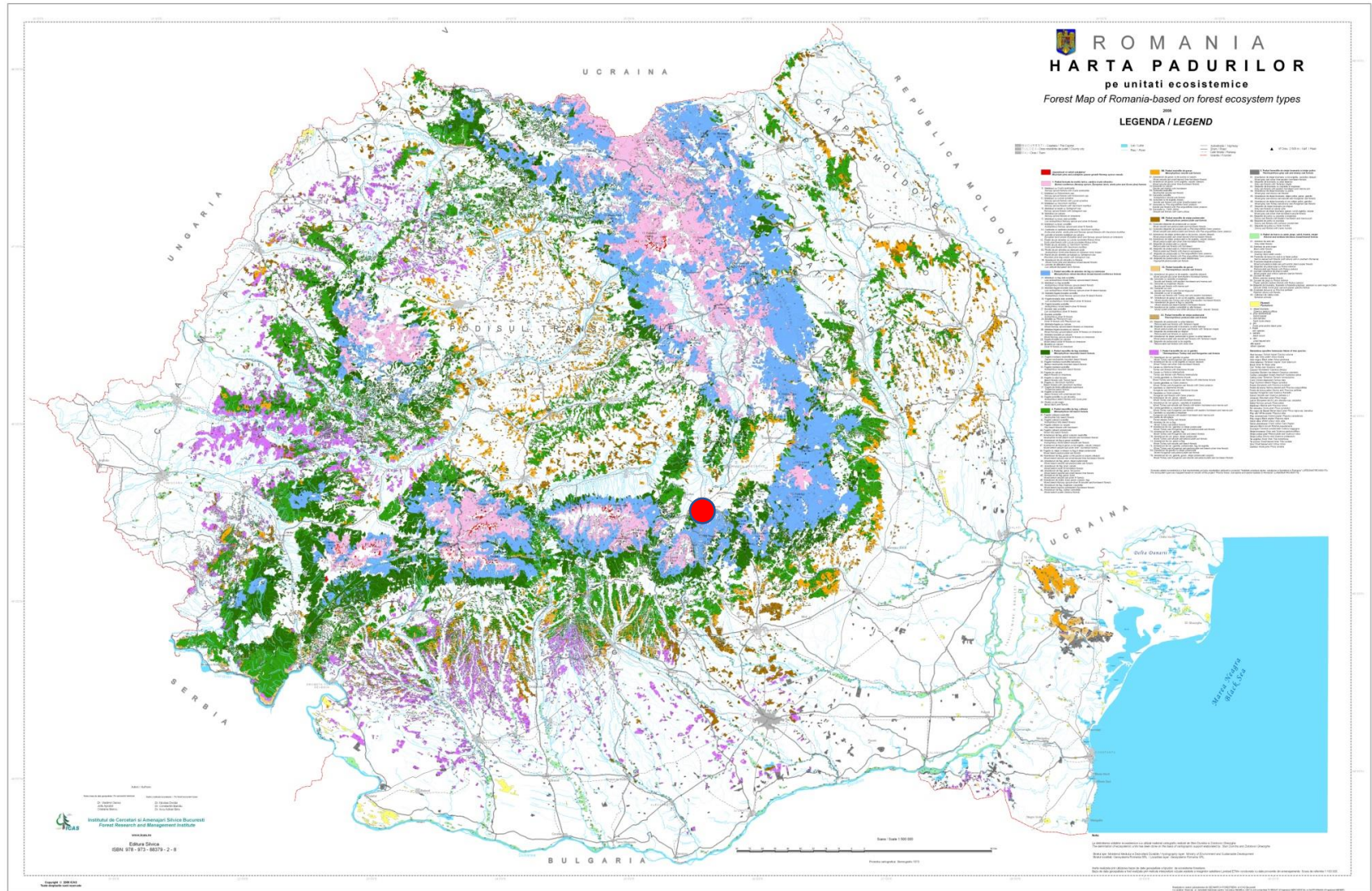


Romania – geographic location





Forests in Romania





High biodiversity in Romanian forests

- Diverse environments (five biogeographical regions)
- Diverse tree species compositions
- Diverse stand structures
- Age diversity – mosaic of different age classes in the landscape
- Maintenance of forestland area (control of land use change) and even increase
- A well connected forestland





Braşov city



The largest university in Central Romania



International Conference Center



Modern library

740.000+ volumes
access to electronic
databases



Transilvania
University
of Braşov



Student facilities

2 campuses for student residences (4000+ accommodation places)

2 canteens (1000 places)

3 sport halls, 3 sport fields

Multifunctional recreational center



INTERNATIONALIZATION

300+ international full time students

200+ incoming students (Erasmus+ and CEEPUS, bilateral agreements)



The international students are offered **intensive classes in the Romanian language**



Transilvania
University
of Braşov

THE MULTICULTURAL CENTER

The Multicultural Center of Transilvania University of Brasov is a meeting point between the community and contemporary art, offering a program of events and projects conceived to promote the artistic expression and ideas of the various cultures that make up the world we live in. Through its multidisciplinary openness, the activity of the Center includes projects in visual arts, contemporary music, film, theatre, dance, philosophy, publishing, etc., which are coordinated or curated by acknowledged personalities.

www.unitbv.ro/cultural

**CENTRUL
MULTICULTURAL**
AL UNIVERSITĂȚII
TRANSILVANIA
DIN BRAȘOV



Forestry education in Brasov

Tradition

Since 1948 in Brasov (founded in XIX)

Excellence

Romanian ranking system - **A** (highest category)

Internationalization

Cooperation and exchange with universities from Europe, North and South America, Asia

Infrastructure

- 34 laboratories and seminar rooms;
- herbarium (70,000 plants), fauna museum;
- library with the largest collection of old forestry books in Romania;
- three game management areas (bear, wolf, wild boar, red deer, roe deer etc.);
- trout and pheasant farm;
- forest nursery and dendrological collection.



Experimental stations in the Carpathian Mountains





Field trips across the country



Laboratories



Transilvania
University
of Brasov
FACULTY OF SILVICULTURE
AND FOREST ENGINEERING





Research infrastructure



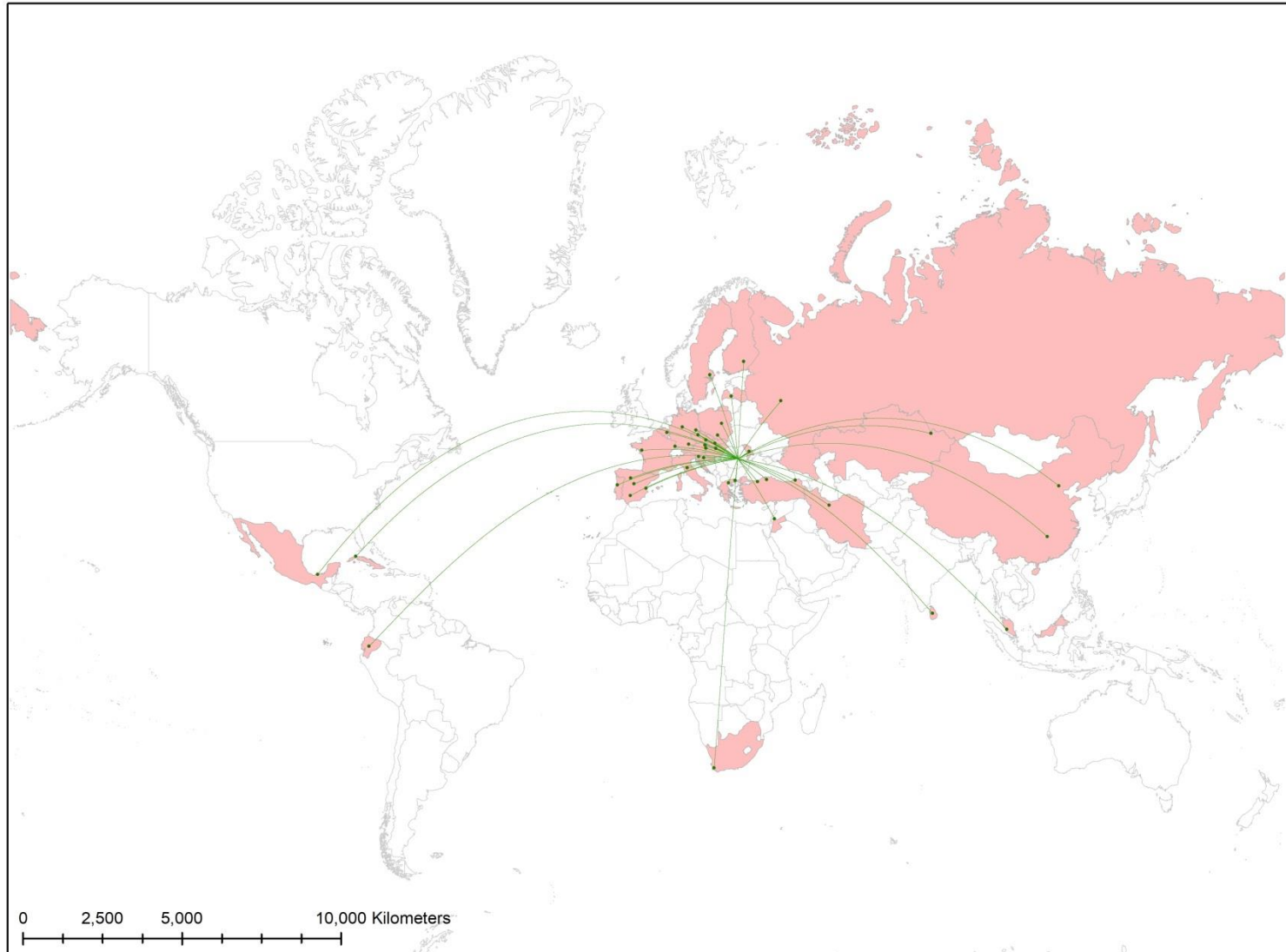
Research



- basic and applied research projects
- projects are financed by:
 - National Research Council (CNCS), Ministry of Environment, Water and Forests
 - European Commission (Horizon Europe, Horizon 2020, Life program, South East Europe Transnational Cooperation Program),
 - Forest State Service, private forest districts and companies
- Two research centers in University R&D Institute
- IUFRO member, Evoltree network, etc.







Erasmus+ agreements Forestry



Master's degree

Study programmes

-  Forest Ecosystem Management
-  Management and Technical Systems in Forest Engineering
-  Multiple Purpose Forestry – taught in English
-  European Forestry - taught in English





MSc study programs

- Academic year: 1 October 2022 - 15 July 2023
- Group size: 15 -20 students
- Housing in student residence (app. 120 EUR/month) - double rooms
- Study visa – Romania is not in Schengen area, harmonized legislation



MSc Curriculum

2nd Year
3rd Semester

| Course title | Code | No. of credits | Number of hours per week | | | |
|---|-----------|----------------|--------------------------|----------|------------|---------|
| | | | course | seminar | laboratory | project |
| Forest Management and Chain of Custody Certification | FMC | 6 | 1 | | 2 | |
| Forest Based Bio-economy | FBB | 5 | 1 | 2 | | |
| Decision-Support Systems in Forest Ecosystem Management | SSFM | 5 | 1 | | 1 | |
| Strategy and Marketing of Forest Products | SMFP | 4 | 1 | | 1 | |
| Silviculture and Yield of Forest Ecosystems | SYFE | 4 | 1 | | 1 | |
| Life Cycle Assessment in Forestry / Business Process Management in Forestry | LCAF/BPMF | 6 | 1 | | 2 | |
| Total | | 30 | 6 | 2 | 7 | |

MSc Curriculum

2nd Year
4th Semester

| Course title | Code | No. of credits | Number of hours per week |
|---------------------------|------|----------------|---------------------------------|
| Research Activity | RES | 20 | 10 weeks x 15 hours = 150 hours |
| Elaboration of MSc Thesis | DIS | 10 | 4 weeks x 15 hours = 60 hours |
| Total | | 30 | |

Choice of supervisor for MSc thesis – Winter Semester, Submission of the MSc thesis – Mid June (next year), Defense of the MSc thesis – early July (next year)

Options for pursuing a doctorate degree in Forestry





Thank you for your attention!



Contact: Alexandru Lucian CURTU, E-mail: lucian.curtu@unitbv.ro

