

University of Freiburg



MSc-EF Partner

Faculty of Environment and Natural Resources

Albert-Ludwigs-Universität Freiburg

Prof. Dr. Thomas Seifert
thomas.seifert@wwd.uni-freiburg.de

Ms Leila Zarabi
leila.zarabi@wwd.uni-freiburg.de



UNI
FREIBURG

University of Freiburg



MSc-EF Partner

Faculty of Environment and Natural Resources

Albert-Ludwigs-Universität Freiburg

Prof. Dr. Thomas Seifert
thomas.seifert@wwd.uni-freiburg.de

Ms Leila Zarabi
leila.zarabi@wwd.uni-freiburg.de



**UNI
FREIBURG**



Polen

Niederlande

Deutschland

Belgien

Luxemburg

Tschechien

Slowakei

Freiburg

Österreich

Ungarn

Frankreich

Schweiz

Google

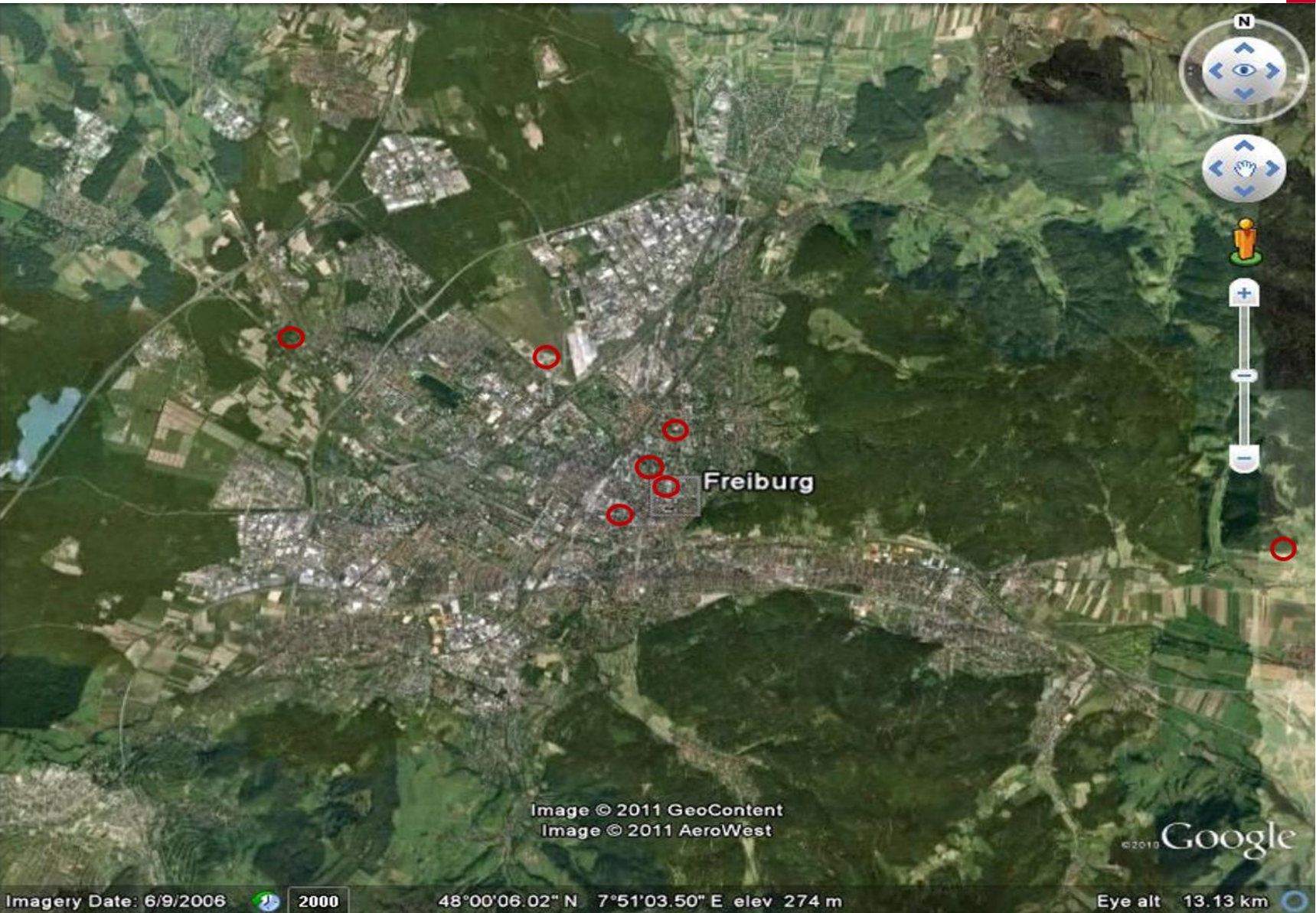
Slowenien

Kroatien

Freiburg from above



UNI
FREIBURG



Freiburg at the foot slopes of the Black Forest



UNI
FREIBURG



Black Forest



UNI
FREIBURG



Image Spiecker,

Black Forest



UNI
FREIBURG



Image Spiecker,

Black Forest



UNI
FREIBURG



City of Freiburg



UNI
FREIBURG

- Population ca.230.000
- Located at the foothills of the Black Forest
- A few minutes away from the French and Swiss borders
- Known as the „Green Capital of Germany“
- The warmest city in Germany



Photo, Spiecker

Freiburg - a City with a green attitude



UNI
FREIBURG



Freiburg is



- ... old (12th century)
- ... just the right size (230,000 inhabitants)
-a cheerful university town
-sitting at the foot slopes of the Black Forest
- ... surrounded by beautiful landscape
-the sunniest town in Germany

→ **a perfect place to live!**



Student impression



URG



The city of Freiburg, with the Münster under restoration (Photo by Jennifer Nielsen)

“The city of Freiburg is a university city, so there will be always lots of students everywhere. This means that you will probably have lots of good time and make a lot of friends. It is also a very beautiful town, with a very old history and architecture, situated just at the foothills of the Black Forest”

(Vlad Strimbu, former Master student from UBC).

Freiburg - a city with a good vibe



UNI
FREIBURG



Foto Spiecker

Freiburg – a good place for living



Foto Spiecker

In Freiburg you can



- ...live easily without car
- ...hike in a few hours from spring to winter
- ...walk through vineyards
- ...go skiing in the Black Forest
- ...travel to France and Switzerland in 45 min
- ...find groups for everything
- ...have a nightlife and
- ...eat a Black Forest Cake



Freiburg University



UNI
FREIBURG

Founded in 1457

11 faculties

200 study programmes

400 full professors

20.000 students

2.500 PhD students

European Campus University



Heart of the city



UNI
FREIBURG



The Faculty of Environment and Natural Resources



UNI
FREIBURG



...started in 1970 as **Faculty of Forest Sciences**



...and over time became bigger and bigger

Today

- **Forest Sciences**
- Environmental Sciences
- Geography
- Geology
- Hydrology
- Meteorology

The Faculty of Environment and Natural Resources



UNI
FREIBURG

- 40 professors
- Approx. 500 staff
- 2121 students (50% female, 50% male)
- > 200 PhD students
- 4 Bachelor programmes
- 7 Master programmes
- 1 Graduate School
- Approx. 20 million € third-party funding per year

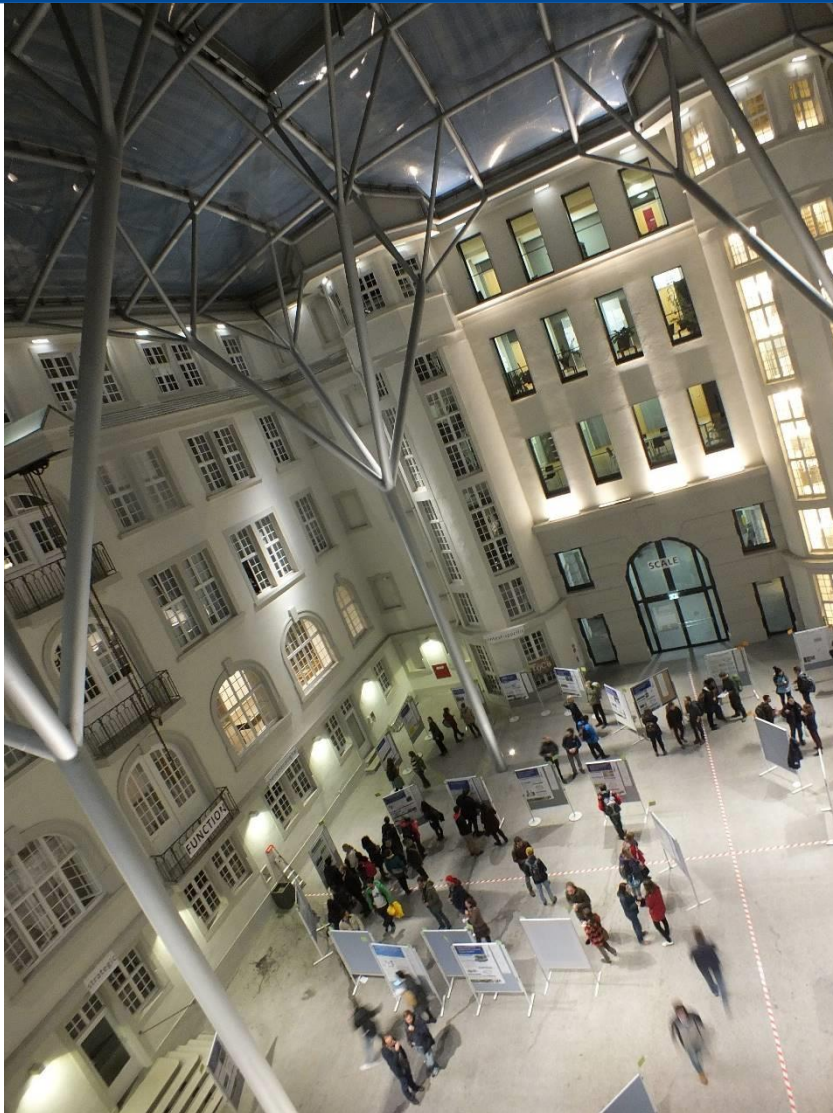
The Faculty's main building



UNI
FREIBURG



Equipped with



- Modern seminar rooms
- 4 computer pools
- Open spaces for multiple use
- Library
- Canteen (5 min walk)
- Faculty hut in the Black Forest
- 10 min walk to city centre

- Interactions between environment and society
- Interdisciplinary approaches including natural, social and technical sciences
- Transfer of research results into the different areas of society.

- Sustainable use of natural resources and renewable energy
- Safeguarding of natural resources: soil, water, air, biodiversity
- Adaptation to Global Change
- Natural Hazards
- Precision Forestry

Why Forest Sciences in Freiburg ?



UNI
FREIBURG

- A centre for Close to Nature Forestry
- A strong research focus on climate change adaptation
precision forestry and nature conservation
- Forest Research Institute (FVA) in Freiburg closeby
- The City of Freiburg is one of the largest municipal forest-owners in Germany.
- 450 kilometres of forest paths

Students on excursion



UNI
FREIBURG



Chairs related to Forest Sciences



- Applied Vegetation Ecology
- Biometry and Environmental System Analysis
- Ecosystem Physiology
- Environmental Meteorology
- Forest and Environmental Policy
- Forest Biomaterials
- Forest Entomology and Protection
- Forest Growth and Dendroecology
- Forest and Forestry History
- Forest Operations
- Forest Genetics
- Forestry Economics and Forest Planning
- Pathology of Trees
- Sensor-based Geomatics
- Silviculture
- Soil Ecology
- Wildlife Ecology and Management

Our goal



to train students to become forest and forestry **experts**

- able to deal with the **current challenges** of ecologically, economically and socially **sustainable forest management** in **science** and **practice** at a **national** and **international** level.



Pick your major



MSc-EF students are able to choose between courses in the International Forestry and the Forest Research Ecology profiles of the Faculty.

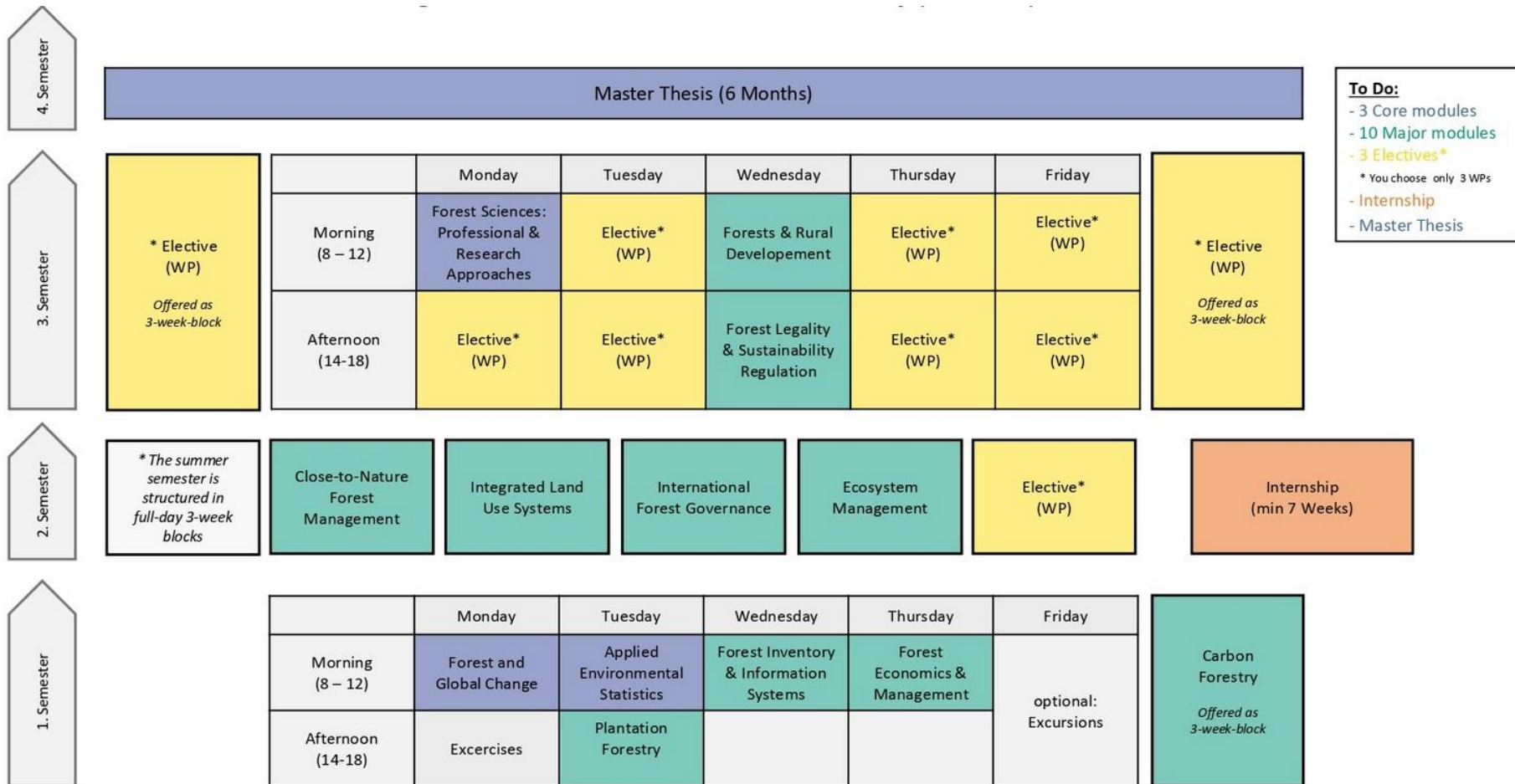


M.Sc. Forest Sciences

Major in International Forestry



UNI
FREIBURG



M.Sc. Forest Sciences

Major in Forest Ecology Research



UNI
FREIBURG

4. Semester

Master Thesis (6 Months)

3. Semester

* Elective (WP) <i>Offered as 3-week-block</i>	Morning (8 – 12)	Monday Forest Sciences: Professional & Research Approaches	Tuesday Elective* (WP)	Wednesday Forest Growth & Structure	Thursday Elective* (WP)	Friday Elective* (WP)	* Elective (WP) <i>Offered as 3-week-block</i>
	Afternoon (14-18)	Elective* (WP)	Elective* (WP)	Frontiers in Forest Sciences	Elective* (WP)	Elective* (WP)	

To Do:

- 3 Core modules
- 10 Major modules
- 3 Electives*
- * You choose only 3 WPs
- Internship
- Master Thesis

2. Semester

* The summer semester is structured in full-day 3-week blocks	Experimental Ecology	Tree & Forest Ecophysiology	Forest Entomology	Forest Pathology	Elective* (WP)	Internship (min 7 Weeks)
---	----------------------	-----------------------------	-------------------	------------------	----------------	--------------------------

1. Semester

	Monday	Tuesday	Wednesday	Thursday	Friday	* Elective (WP) Offered as 3-week-block
Morning (8 – 12)	Forest and Global Change	Applied Environmental Statistics	Analysis of Biodiversity Data	Ecosystem Functioning	optional: Excursions	
Afternoon (14-18)	Excercises	Forest Soils and Climate	Genetic & Genomic Methods in Forest Mgmt & Conservation			

**Chose from a large number of subjects
even beyond the offered courses**

Get involved in high-class research e.g. in

the collaborative research centre ECOSENSE
projects on Urban Forestry

agroforestry projects

our extended Reality Forestry Lab

our precision forestry research cluster

University Research Forest „Mathislewald“ in
the Black Forest



A wide-angle photograph of a lush green valley. In the foreground, there's a grassy field with a few trees and a small wooden structure. A dirt path leads towards a white house with a dark roof, nestled among trees. The background shows rolling green hills and distant mountains under a blue sky with scattered white clouds.

THANK YOU FOR YOUR ATTENTION!