

MSc European Forestry
ERASMUS MUNDUS

AgroParisTech 

INRAE
science for people, life & earth



Your second year at AgroParisTech, Nancy, France

Valentine Lafond, Meriem Fournier

January 2026

Contact : valentine.lafond@agroparistech.fr
(meriem.fournier@agroparistech.fr)

AgroParisTech 

*Paris Institute of technology for
life, food and environmental
sciences*

Campus of Nancy

Key facts and figures

- National Institute of Technology for Life, Food and Environmental Sciences
 - An institute created in 2007... but with an history of 200 years
- French leading “*Grande Ecole*” (Elite higher education institution) in life sciences
 - Training programs from master level (Flagship French MSc in engineering “diplome d’ingénieur”, MSc, PhD ...)
- Our missions:
 - Education, research, outreach, entrepreneurship and innovation
- Our Disciplines:

<ul style="list-style-type: none"> • Plant Sciences • Animal Sciences • Agronomy • Food Sciences • Ecology • Data Science and AI 	<ul style="list-style-type: none"> • Nutrition and Health Sciences • Biotechnology and Green Chemical Engineering • Forestry • Microbiology • Soil Sciences 	<ul style="list-style-type: none"> • Water Engineering • Remote Sensing • Ecotoxicology • Economics and Social Sciences • Bioclimatology • Statistics and Mathematics
--	--	---

- 7 AgroParisTech campuses
- 5 teach forestry (+/-)
- Nancy leads forest-related teaching



Nancy coordinates forest research and high education at AgroParisTech

AgroParisTech Campus of Nancy

Founded in 1824-25 (200 years old!), located downtown in the historical site



AgroParisTech Campus of Nancy

➤ 250 students (MSc, PhD) per year

*Master and PhD programs in :
Forestry, Ecology, Plant sciences,
Environmental economics...*

➤ 50 permanent researchers and teachers

➤ 3 Research Units

- SILVA (forest ecology, tree biology, silviculture, wood formation and quality)
- BETA (forest and environmental economics)
- LIF Forest Inventory Lab (IGN)



AgroParisTech Nancy - Research



Laboratoire d'excellence

ARBRE

Advanced Research on Tree and Forest Ecosystems. *Labelled cluster of labs.*

ARBRE involved INRAE and other institutes

INRAE = National and world's top research institute in Agriculture, Food and Environment (including forest sciences)

A STRONG RESEARCH NETWORK

- 300 researchers and teachers
- Covering a **wide range of disciplines**: genomics, biology, ecology, forest inventory, wood sciences, economics, sociology, silviculture, forest management
- Addressing **key questions** related to: nutrient cycling, carbon storage and cycling, forest productivity, forest biodiversity, wood products, ecosystem services and sustainable forest management.
- Strong partnerships with the French private and public forest sector,
- International flagships projects within networks (EFI, Nancy Freiburg Zurich forest.net, Europe, North and South America, China ...)

Research facilities

Field facilities



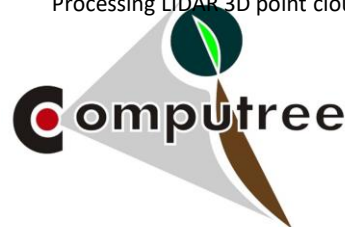
Eddy flux tower of Hesse (57)



Mobile platform M-POETE

THE COMPUTREE PLATFORM

Processing LIDAR 3D point clouds



Credit logo Computree : Pierre Gélisse (INRA Nancy).

Computree is a processing platform for 3D points clouds, obtained with LIDAR or photogrammetry. It aims to regroup algorithms for forests scenes analysis, in order to extract data on structure of trees and stands.

Technical tools

Labs



Silvicultural experiments



Large data bases

Journal of Vegetation Science

Advances in plant community ecology

Full Access

EcoPlant: A forest site database linking floristic data with soil and climate variables

Jean-Claude Gégout, Christophe Coudun, Gilles Bailly, Bernard Jabiol



Forest system models

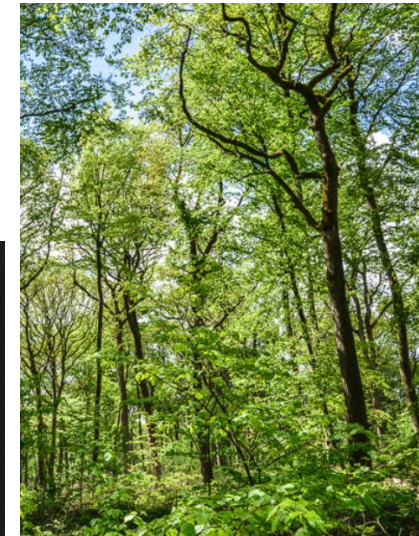
A carbon accounting tool for complex and uncertain greenhouse gas emission life cycles

Article in *Environmental Modelling and Software* - June 2010

AgroParisTech Campus of Nancy

School forest: Forest of Brin

- 600 ha
- 20 km from Nancy
- Multiple values
 - Wood production (oak and beech)
 - Hunting
 - Recreation
 - Biodiversity, water management (pond)
 - History (battlefield of the two world wars)
- Multiple risks: climate change, pests...



AgroParisTech Campus of Nancy

On-site student residence in Nancy

- 76 rooms
- 12 studios
- Priority given to foreign students (for rooms)
- Monthly rent :
for a room \approx 210 €
for a studio \approx 460 € to 520€



About Nancy > Facts



➤ Location

- Eastern France, continental Europe
- Close to Belgium, Germany, Switzerland and Luxembourg
- Close to the Vosges Mountains
- But only 1h 30 from Paris by fast train (TGV)

➤ A historical city

➤ But also... A « young » / dynamic city

- 300 000 inhabitants
- Among which 50 000 students !

About Nancy > Historical center

Porte de la Craffe (14th century)



Palais ducal (16th century)



Place Stanislas (18th century)



About Nancy > Student events



Sports
Week-end hike
Restaurants
Music
Student nights

About Nancy > Green areas

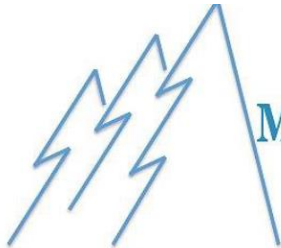


La Pépinière, 23 ha
500 m from the campus

Plateau de Malzéville, 400 ha
5 km from the campus



*Your education during the
second year in Nancy*



MSc European Forestry
ERASMUS MUNDUS

Welcome to France !



Services to international students

- AgroParisTech was rewarded for the quality of its support system and welcoming
- Support from the European & International Relations Office (visa, housing, scholarships, etc.)
- AgroParisTech residences (priority access, affordable and well equipped)

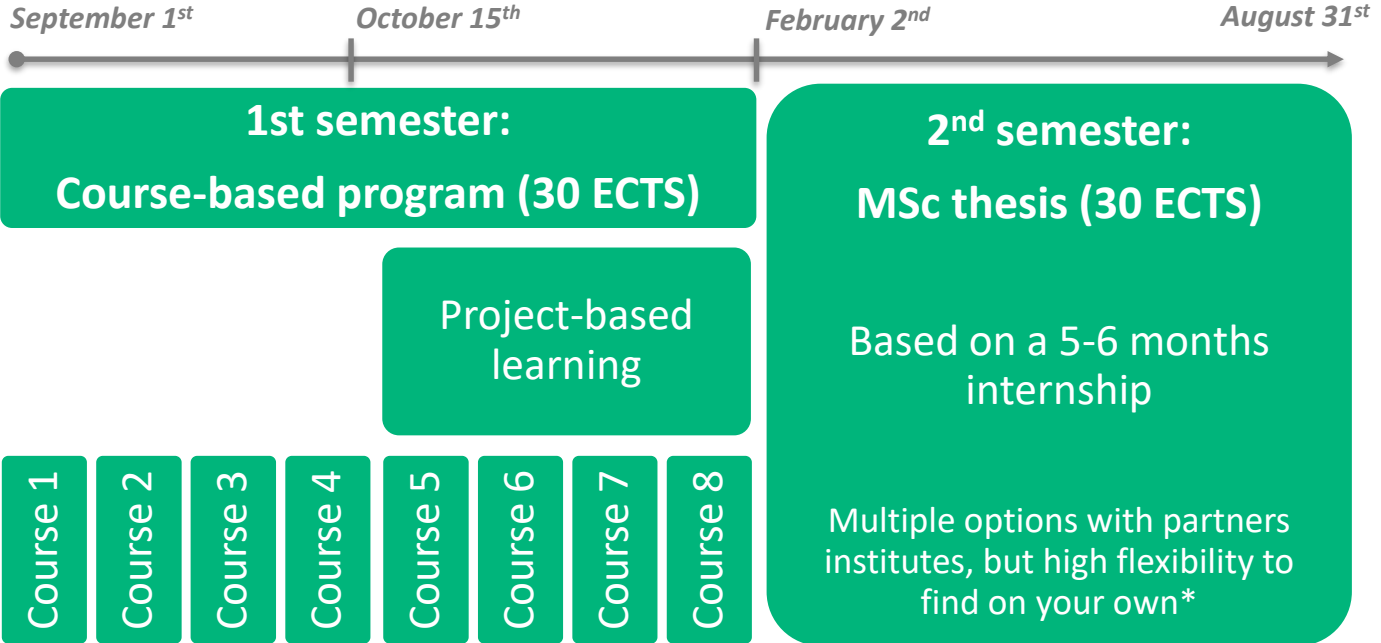
Your education during the second year in Nancy

- You are enrolled in AgroParisTech-Nancy's MSc program, called « AETPF » (Agrosciences, Environment, Territories, (P) landscapes and Forests)
- AETPF is co-accredited with University of Lorraine
- There are 5 tracks, 1 offered in English
- Your track is called « FEN »: Forests and their environment
- Some courses are joint courses with other tracks

FEN's objectives

- Train experts in the assessment and monitoring of Forest ecosystems in the context of climate change to support climate change adaptation and multifunctional management
 - Strong expertise in ecology and data management
 - Good knowledge of global and local issues in Forestry
- Small groups (10 to 15 students, French & International)
- Many options for pursuing a PhD degree.

FEN's schedule



+ French courses

() Any forest- or environment-related institute (research institutes, forest management company, government, NGO...) in France, Europe or elsewhere (just not in your home country)*

FEN's schedule

1st semester : fieldcourses !

- Forest plant communities and forestry



- Introduction to the forestry context in Eastern France



FEN's schedule

1st semester :

24 ECTS = 8 courses of 3 ECTS (out of 10 options)

Innovative European Forestry

- Temperate forest silviculture and industry
- Forests and forestry in a context of global change - with ALU



Tools for innovative forest management

- GIS in forest ecology and management
- Managing collective innovation project
- Advanced statistics
- Models for forest research and management

(1 week in Germany,
1 in France)

Forest Science (Ecology and Economics) for forest management in the context of climate change

- Forest economics and ecosystem service assessment (**Comp**)
- Understanding tree structure and functions
- Dynamic of forest plant and tree communities
- Biogeochemical cycles in forest ecosystems

FEN's schedule

1st semester :

24 ECTS = 8 courses of 3 ECTS (out of 10 options)

+ 1 course of 6 ECTS called « project »

= professional and creative skills in project mode

➤ Learning by doing, project management skills.

2 OPTIONS

Individual work

- 6 weeks in a research lab.
- Daily life of scientists
- Developing your own skills working with a researcher
- Defining a research approach (like in the beginning of a thesis)

Team work (3 to 5 students)

- Question proposed by a supervisor (impacts of climate change, innovative management, changes in policies...)
- Field work, data processing, contact with researchers, practitioners and local policies
- Developing teamwork skills

PROJECT WRITTEN REPORT AND ORAL DEFENSE

FEN's schedule

2nd semester : Your MSc thesis & internship

- The MSc thesis is associated to a 5 to 6 month internship
- You are free to find your supervisor and host structure (anywhere but your home country => Erasmus Mundus rules)
- Admin aspects (French law): your internship is a « job offer »
 - You have a contract with the hosting institution (signed by you, AgroParisTech and the host institution)
 - You are paid (not so much) if internship in France.
- Requirements are :
 - The proposed internship involves to solve problems using innovative thinking and methods (at MSc level)
 - You are supported by an AgroParisTech teacher (referent) with regular meetings



Questions ?