

Studying the second year at Braşov



**TRANSILVANIA UNIVERSITY
OF BRASOV**





Romania

46.00 N, 25.00 E

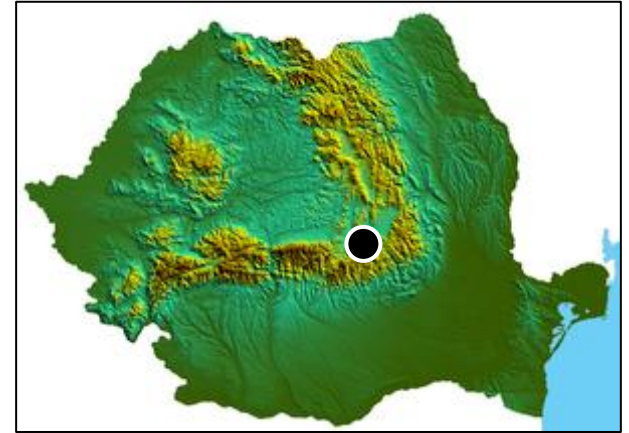
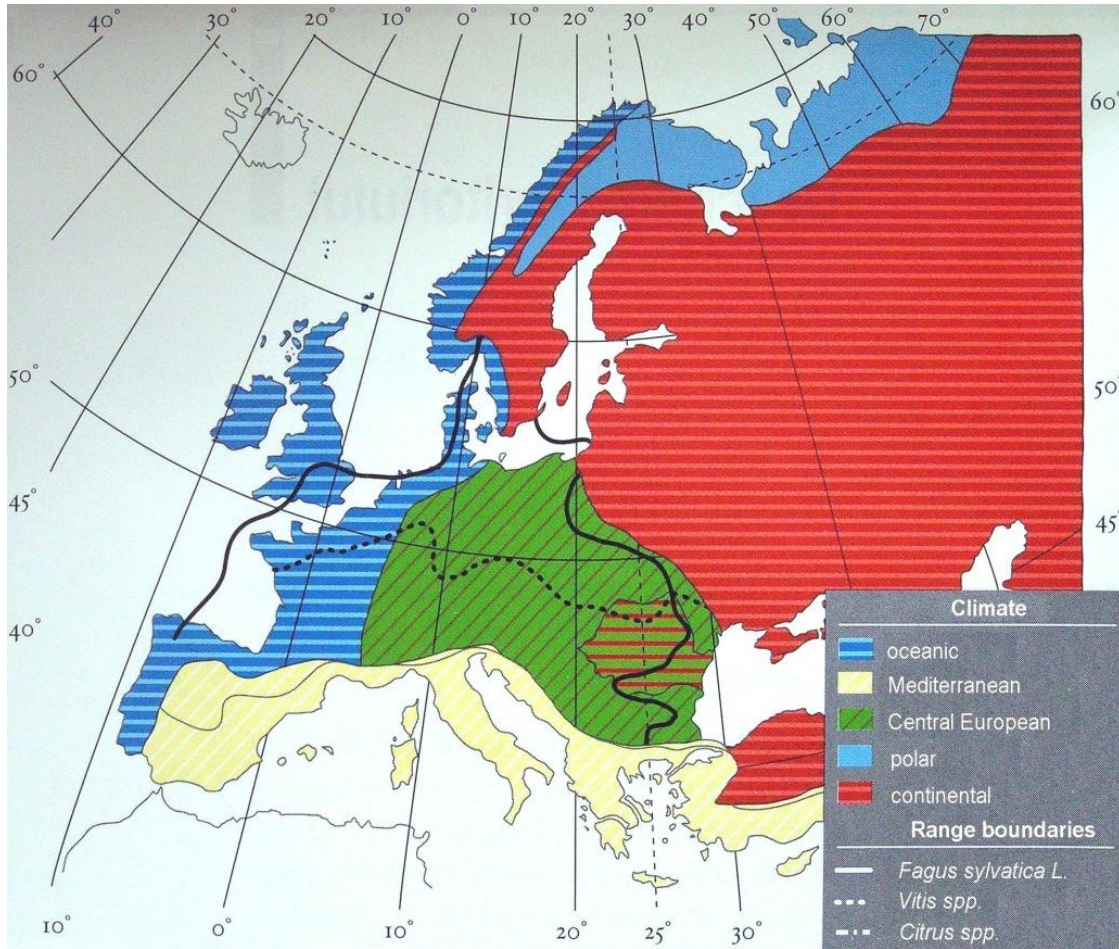


Surface area 238,397 km²

20.1 million inhabitants



Climate and topography



Tufescu 1974



Forests in the Carpathian Mountains





Transilvania
University
of Braşov



UNITBV

The largest university in
Central Romania

Public university
established in 1948





Braşov

- Capital of Brasov county
- Multi-cultural city established in the XII century
- More than 300,000 Inhabitants (MA 400,000)
- The most important tourist city in Romania after the capital (Bucharest)
- 150 km from Bucharest International Airport, An International Airport in Brasov from July 2023



Comprehensive university



Faculty of Mechanical
Engineering



Faculty of Civil
Engineering



Faculty of Physical
Education and
Mountain Sports



Faculty of Technological
Engineering and
Industrial Design



Faculty of Food
and Tourism



Faculty of Music



Faculty of Materials
Science and Engineering



Faculty of Product
Design And Environment



Faculty of Medicine



Faculty of Electrical Engineering
and
Computer Science



Faculty of Mathematics
and Computer Science



Faculty of Letters



Faculty of Silviculture and Forest
Engineering



Faculty of Economic
Sciences and Business
Administration



Faculty of Law



Faculty of Furniture Design and
Wood Engineering



Faculty of Psychology
and Education Sciences



Faculty of Sociology
and Communication



Diversity in education

18 faculties/ **30** departments

• **20.000+** students

• **100** Bachelor's degree programmes

80% bachelor's/17.5% master's/ 2.5% PhD

• **1.300+** staff members

• **79** Master's degree programmes

1000+ academic staff (722 tenured and 289 associated staff)

• **19** fields of doctoral studies

38 researchers

Infrastructure

21 Buildings

→ **7** Buildings within the historical city centre

→ **10** Buildings within COLINA campus

→ **4** Buildings in other parts of the city

13 Dorms

2 Cafeterias

Research and Development Institute with 12 buildings with high energy efficiency



International Conference Centre – 450 places and 8 conference halls



3 sports fields and 3 sports arena



The University Library
550.000+ volumes



4 experimental stations



3 wildlife management areas





RESEARCH
AND DEVELOPMENT
INSTITUTE
Transilvania University
of Brasov

The largest Research Institute of a Romanian university

EU funding (built and equipped in 2009-2013)

- 30 research centers
- 20.780 m² in 12 buildings unified by a central spine





H2020 and Horizon Europe



Small4Good

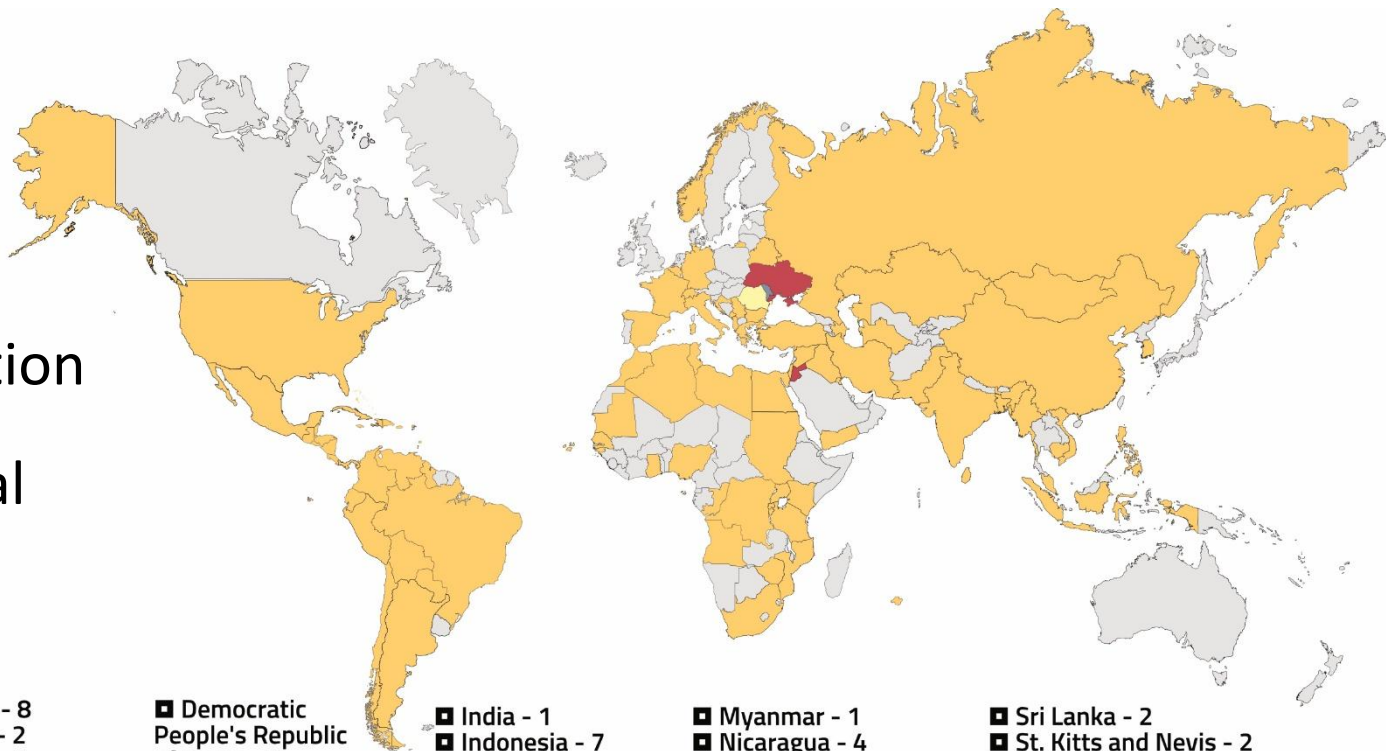


VALORISATION OF HARVESTED AGROFORESTRY BIOMASS WASTE AS FEEDSTOCK FOR VALUE-ADDED BIO-BASED SOLUTIONS AS A GREEN DEVELOPMENT PATHWAY

iSINK - Testing the replacement of trees regenerated from vegetative shoots with trees regenerated from seeds as a measure to improve forest carbon sink

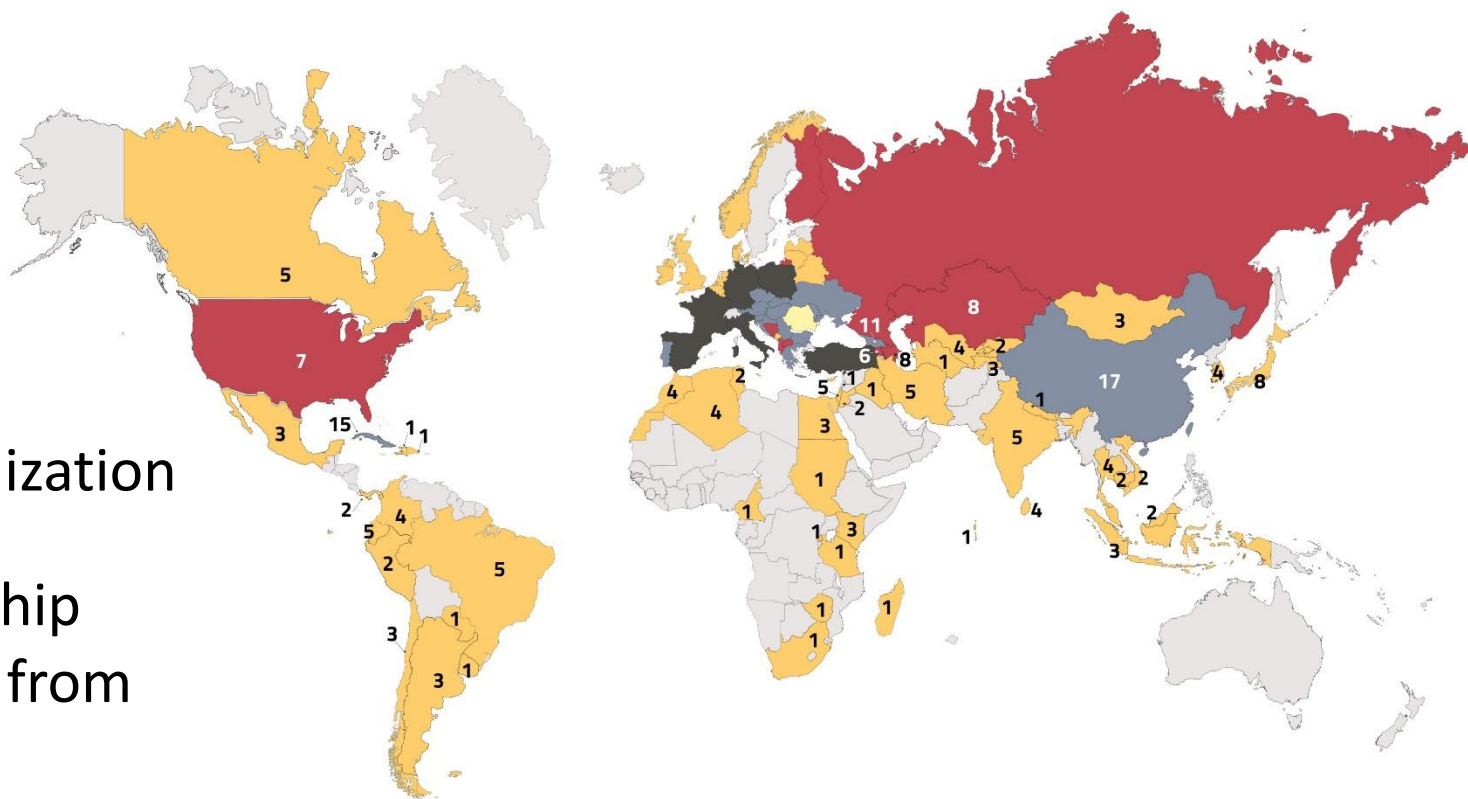
Internationalization

593 international
students from
91 countries



- | | | | | |
|---|--|---|--|--|
| <ul style="list-style-type: none"> ▣ Albania - 8 ▣ Algeria - 2 ▣ Angola - 1 ▣ Argentina - 1 ▣ Azerbaijan - 2 ▣ Bangladesh - 2 ▣ Belarus - 1 ▣ Belgium - 1 ▣ Bolivia - 2 ▣ Brazil - 4 ▣ Bulgaria - 2 ▣ Burundi - 1 ▣ Cambodia - 1 ▣ Cape Verde - 2 ▣ Chile - 1 ▣ China - 4 ▣ Colombia - 2 ▣ Costa Rica - 3 ▣ Croatia - 1 ▣ Cuba - 48 | <ul style="list-style-type: none"> ▣ Democratic People's Republic of Korea - 3 ▣ Democratic Republic of Congo - 2 ▣ Dominican Republic - 2 ▣ Ecuador - 4 ▣ Egypt - 7 ▣ France - 1 ▣ Germany - 10 ▣ Ghana - 4 ▣ Greece - 1 ▣ Guatemala - 2 ▣ Guinea-Bissau - 1 ▣ Guyana - 1 ▣ Haiti - 7 ▣ Honduras - 1 ▣ Hungary - 1 | <ul style="list-style-type: none"> ▣ India - 1 ▣ Indonesia - 7 ▣ Iran - 5 ▣ Iraq - 2 ▣ Israel - 2 ▣ Italy - 3 ▣ Jamaica - 1 ▣ Jordan - 21 ▣ Kazakhstan - 2 ▣ Kenya - 20 ▣ Kuwait - 1 ▣ Libya - 5 ▣ Mauritania - 1 ▣ Mauritius - 1 ▣ Mexico - 2 ▣ Moldova - 205 ▣ Mongolia - 2 ▣ Montenegro - 1 ▣ Morocco - 3 ▣ Mozambique - 1 | <ul style="list-style-type: none"> ▣ Myanmar - 1 ▣ Nicaragua - 4 ▣ Nigeria - 1 ▣ Norway - 1 ▣ Pakistan - 3 ▣ Palestine - 3 ▣ Panama - 1 ▣ Paraguay - 1 ▣ Peru - 4 ▣ Philippines - 2 ▣ Republic of Congo - 4 ▣ Russia - 7 ▣ Rwanda - 4 ▣ Saint Lucia - 1 ▣ São Tomé and Príncipe - 5 ▣ Senegal - 4 ▣ Serbia - 3 ▣ South Africa - 6 ▣ Spain - 3 | <ul style="list-style-type: none"> ▣ Sri Lanka - 2 ▣ St. Kitts and Nevis - 2 ▣ St. Vincent and the Grenadines - 2 ▣ Sudan - 8 ▣ Switzerland - 1 ▣ Syria - 18 ▣ Tanzania - 2 ▣ Tunisia - 1 ▣ Turkey - 6 ▣ Turkmenistan - 7 ▣ Uganda - 2 ▣ Ukraine - 40 ▣ USA - 12 ▣ Venezuela - 2 ▣ Vietnam - 2 ▣ Yemen - 2 ▣ Zimbabwe - 4 |
|---|--|---|--|--|





Internationalization

718 partnership agreements, from **90** countries

European partners:

- | | | | |
|-----------------------------|---------------------|-----------------------|-----------------------|
| ■ Albania - 9 | ■ Denmark - 4 | ■ Latvia - 3 | ■ Portugal - 22 |
| ■ Austria - 11 | ■ Finland - 6 | ■ Lithuania - 7 | ■ Russia - 9 |
| ■ Belarus - 4 | ■ France - 41 | ■ Luxembourg - 1 | ■ Serbia - 14 |
| ■ Belgium - 5 | ■ Germany - 37 | ■ North Macedonia - 7 | ■ Slovenia - 8 |
| ■ Bosnia & Herzegovina - 10 | ■ Great Britain - 3 | ■ Malta - 1 | ■ Slovakia - 11 |
| ■ Bulgaria - 13 | ■ Greece - 18 | ■ Moldova - 12 | ■ Spain - 39 |
| ■ The Czech Republic - 16 | ■ Hungary - 11 | ■ Montenegro - 2 | ■ Turkey - 71 |
| ■ Cyprus - 3 | ■ Ireland - 3 | ■ Norway - 2 | ■ The Netherlands - 4 |
| ■ Croatia - 20 | ■ Italy - 38 | ■ Poland - 45 | ■ Ukraine - 13 |

Master's degree programmes – 2 years

in English

- Virtual Engineering in Automotive Design
- Practical Integrated Methods for Propulsion Systems Engineering
- Engineering of Advanced Manufacturing Processes
- Cyber Security
- Advanced Electrical Systems
- Internet Technologies
- Industrial Business Management and Entrepreneurship
- Multiple Purpose Forestry
- European Forestry
- Language Studies for Intercultural Communication
- Culture and Discourse in the Anglo-American World
- Traditional Chinese Medicine
- Human Performance in Sports Training
- Project Management in Urban Regeneration
- Natural Hazards and Risk Assessment in Civil Engineering
- Gastronomic Engineering
- Teaching, Learning and Counselling in Intercultural Contexts

- Engineering and management in luxury hospitality
- Engineering and management in aviation
- Law and diplomacy of sustainable development
- Leadership of fitness and recreational activities

in French

- Studies of French Language and Culture

in German

- Mobile Applications and Internet Technologies in E-Business
- Intercultural Studies of German Language and Literature

Doctoral programmes

in English - in all 24 fields



UNITA

**In 2023 UNITBV became member of the
UNITA European university alliance.**

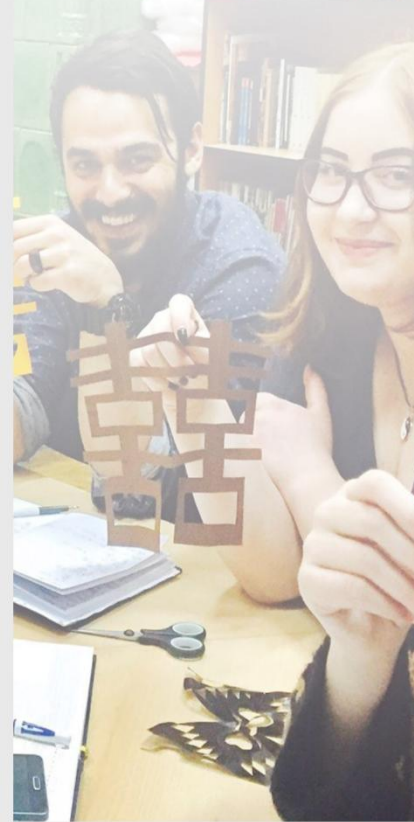


Together with 11 other universities in Europe, Transilvania University of Brasov will contribute , among other things, to the quality of education and research, to increase the number of European mobilities and to the development of a European inter-university campus.

**CENTRUL
MULTICULTURAL
AL UNIVERSITĂȚII
TRANSILVANIA
DIN BRAȘOV**



**CENTRUL
MUZICAL
AL UNIVERSITĂȚII
TRANSILVANIA
DIN BRAȘOV**



Cultural activities

- concerts
- festivals
- cultural projects
- exhibitions
- concerts abroad, in cooperation with the Ministry of Foreign Affairs.

MSc study programs in Brasov

- Academic year: 1 October 2026 - 10 July 2027
- Group size: 10 students
- Housing in dorms for international students (app. 150 EUR/month) - twin rooms



MSc Curriculum – European Forestry

2nd Year
3rd Semester

Course title	Code	No. of credits	Number of hours per week			
			course	seminar	laboratory	project
Forest Management and Chain of Custody Certification	FMC	6	1		2	
Forest Based Bio-economy	FBB	5	1	2		
Decision-Support Systems in Forest Ecosystem Management	SSFM	5	1		1	
Strategy and Marketing of Forest Products	SMFP	4	1		1	
Silviculture and Yield of Forest Ecosystems	SYFE	4	1		1	
Life Cycle Assessment in Forestry / Business Process Management in Forestry	LCAF/BPMF	6	1		2	
Total		30	6	2	7	



MSc Curriculum

**2nd Year
4th Semester**

Course title	Code	No. of credits	Number of hours per week
Research Activity	RES	20	10 weeks x 15 hours = 150 hours
Elaboration of MSc Thesis	DIS	10	4 weeks x 15 hours = 60 hours
Total		30	

Choice of supervisor for MSc thesis – Winter Semester, Submission of the MSc thesis – Early June (next year), Defense of the MSc thesis – late June/early July (next year)

Options for pursuing a doctorate degree in Forestry



THANK YOU!



Transilvania
University
of Brasov

