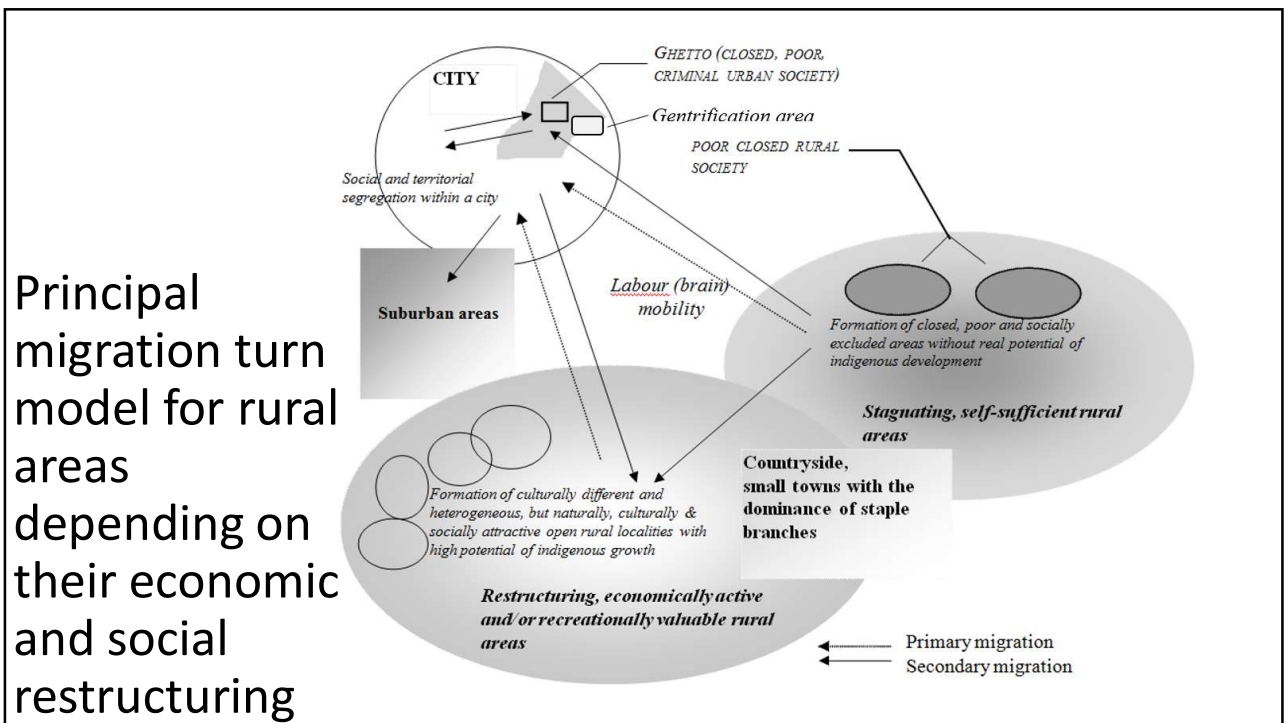
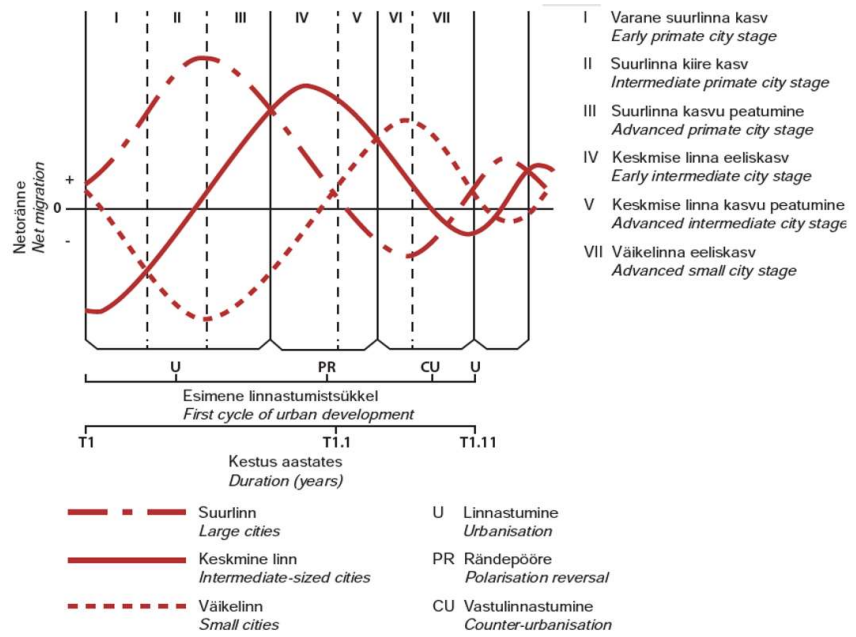


1



2

Differential urbanization model.
Source: Geyer & Kontuly 1993.

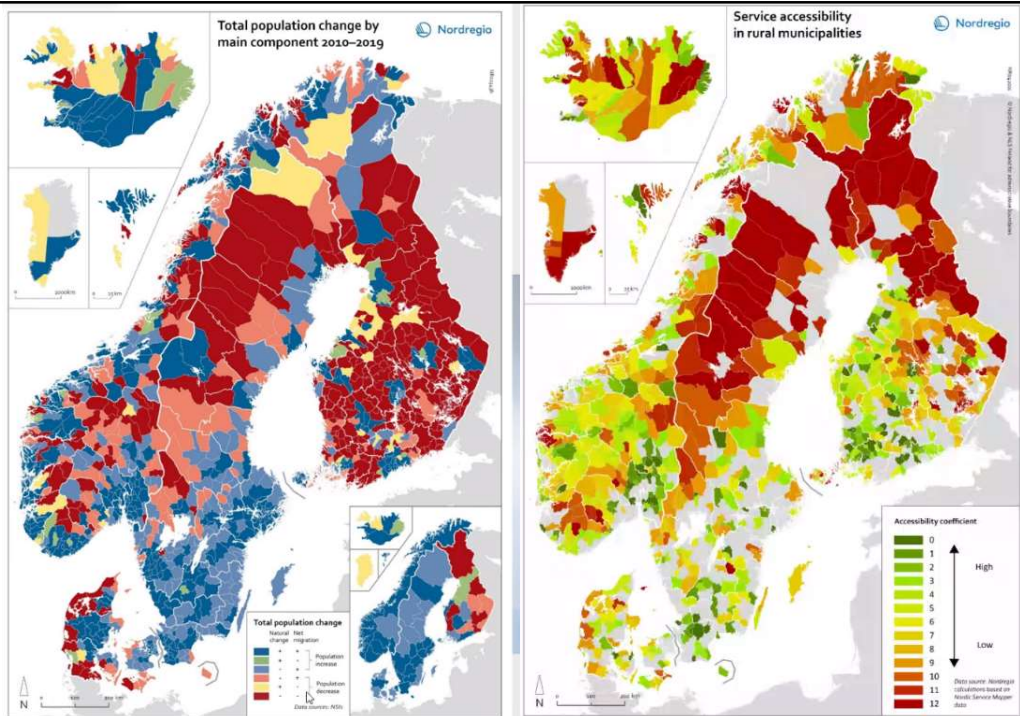


3

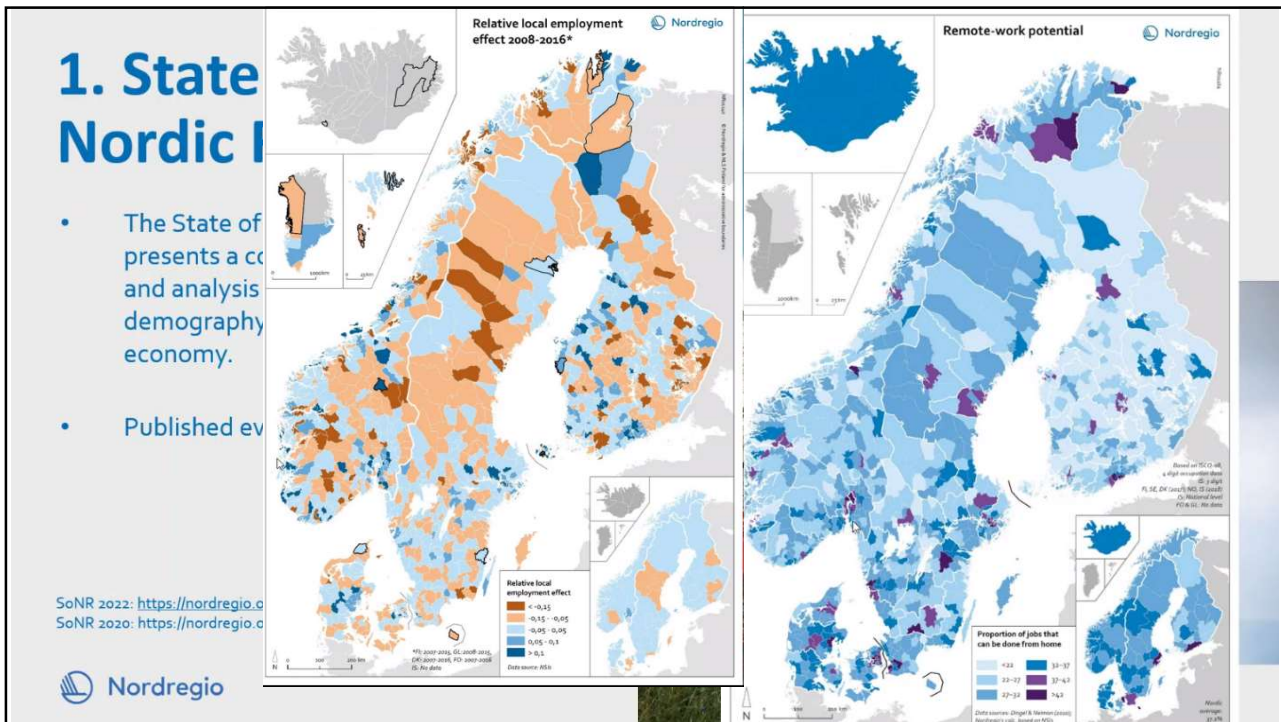
Nordic state

<https://www.espon.eu/european-rural-policy-at-crossroads>

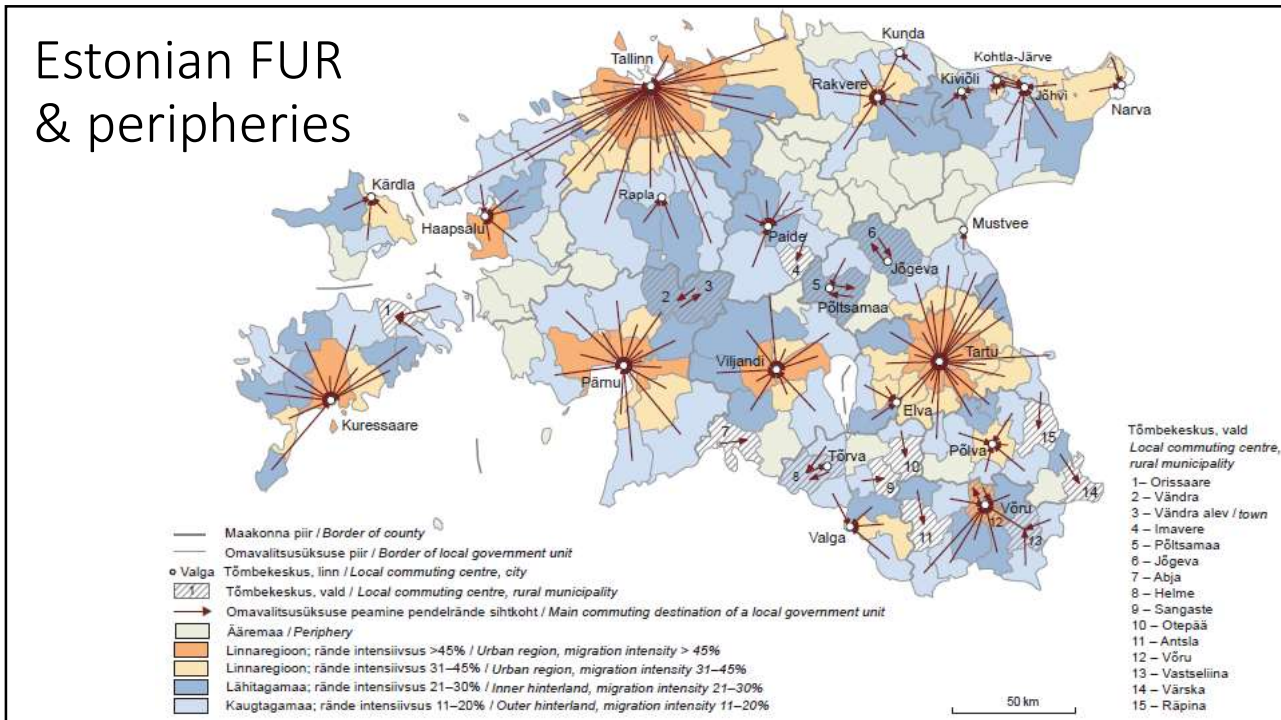
<http://nordregio.org/wp-content/uploads/2022/03/State-of-the-Nordic-Region-2022.pdf>



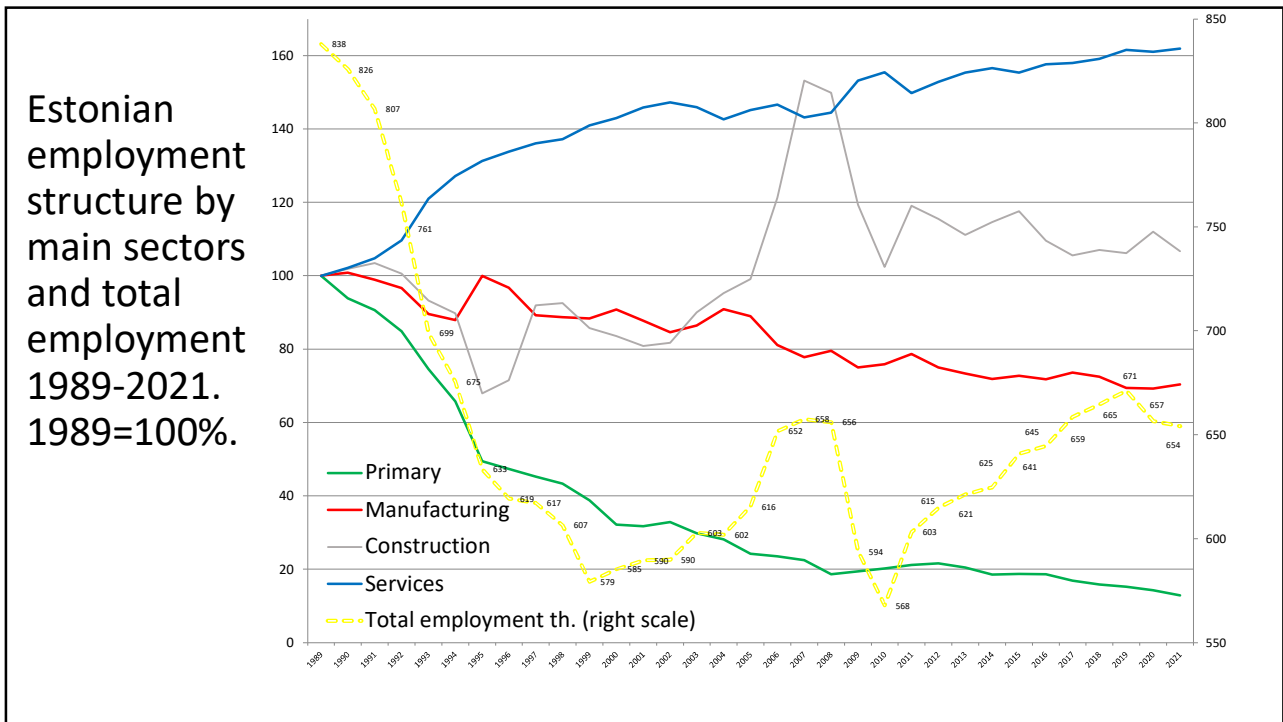
4



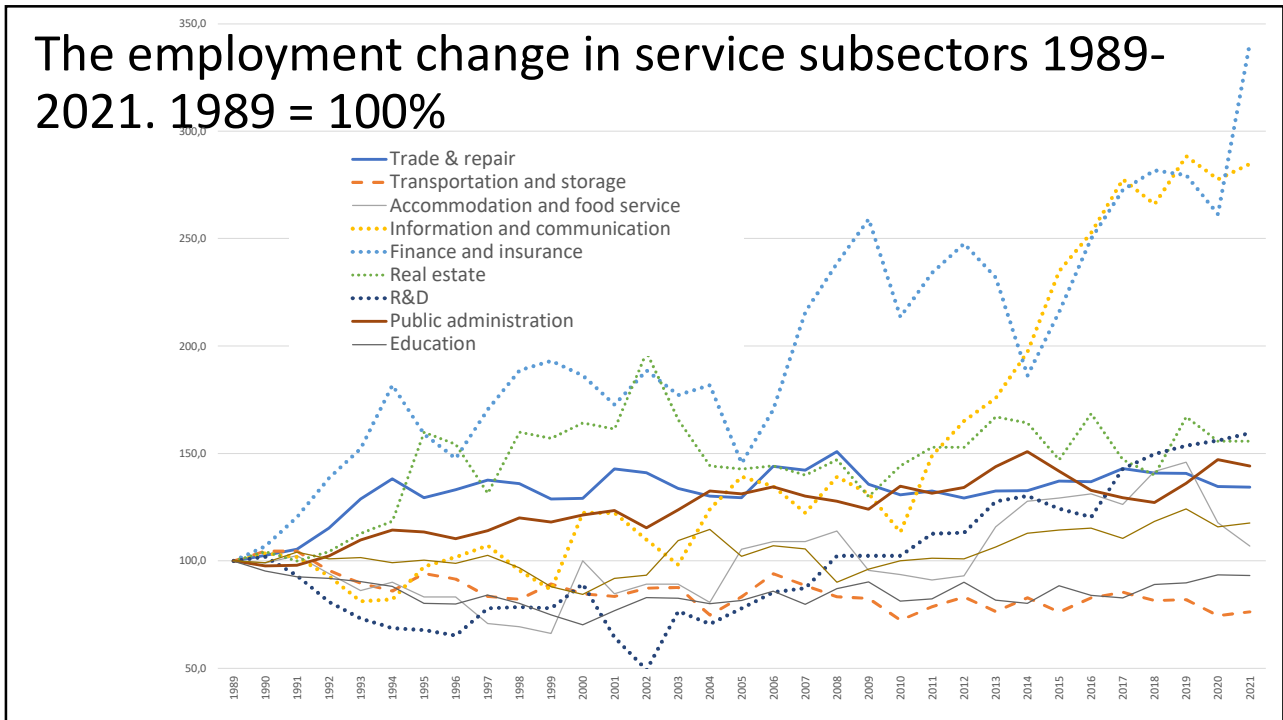
5



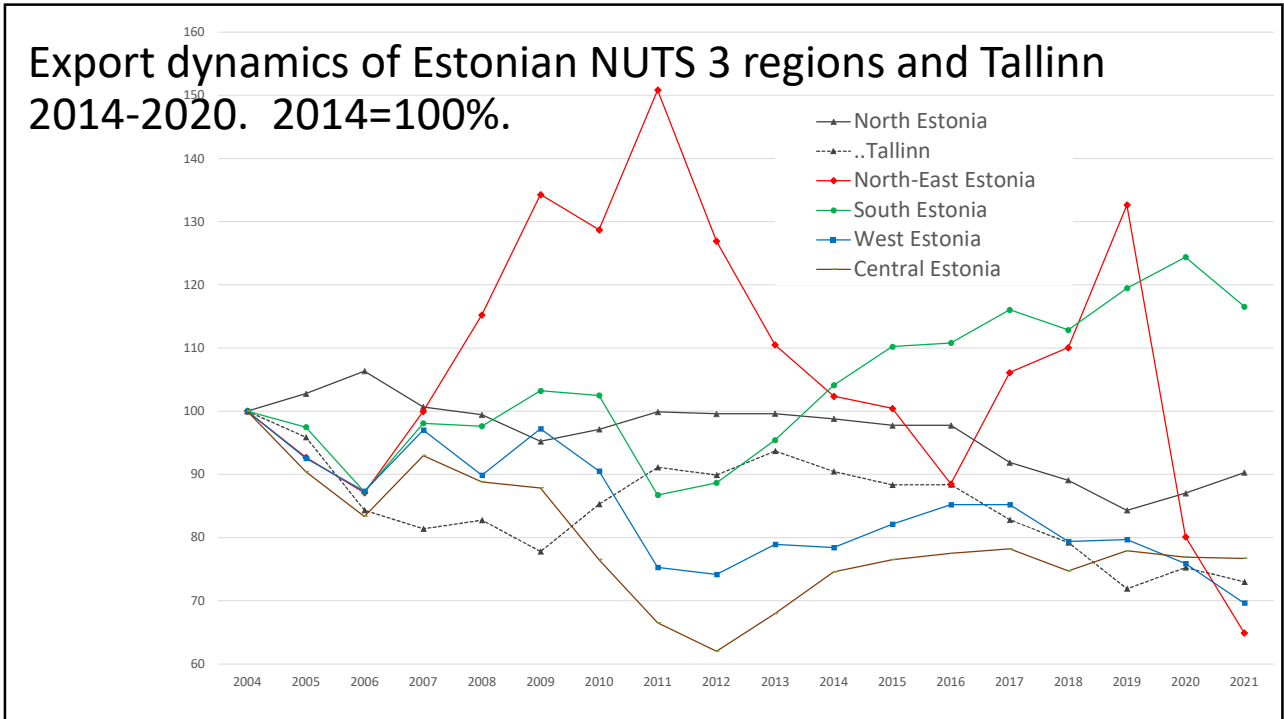
6



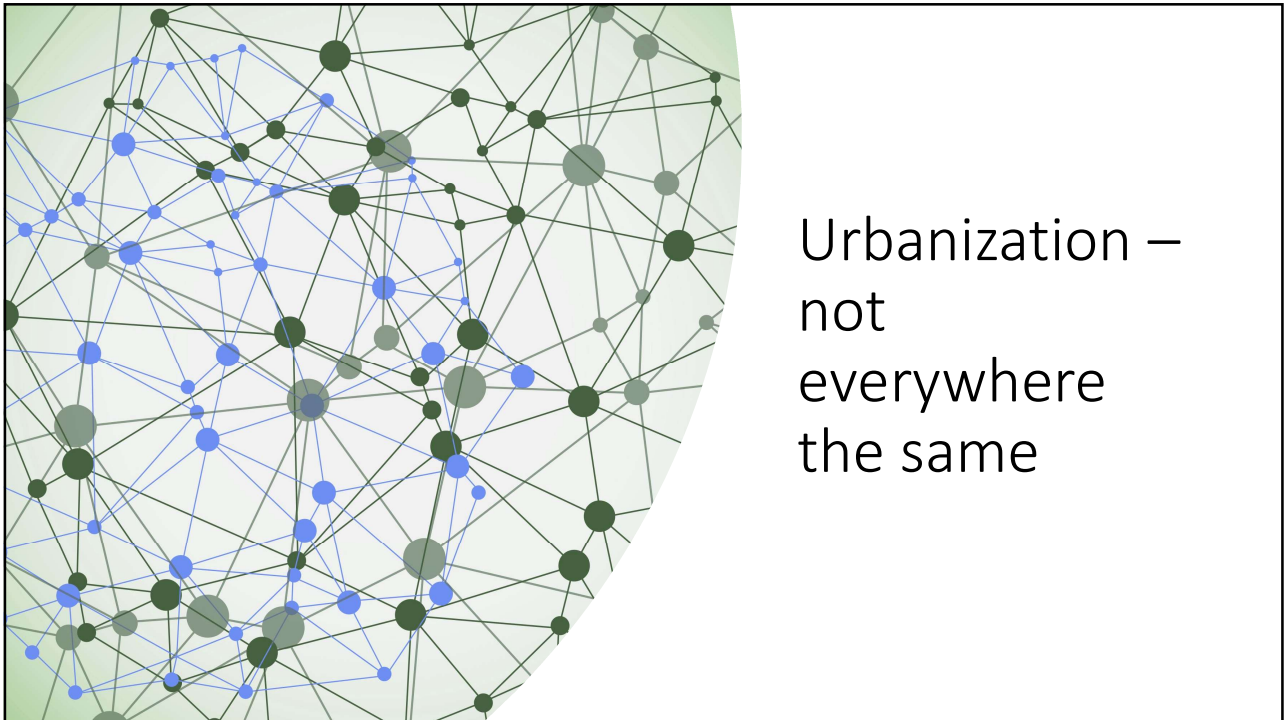
7



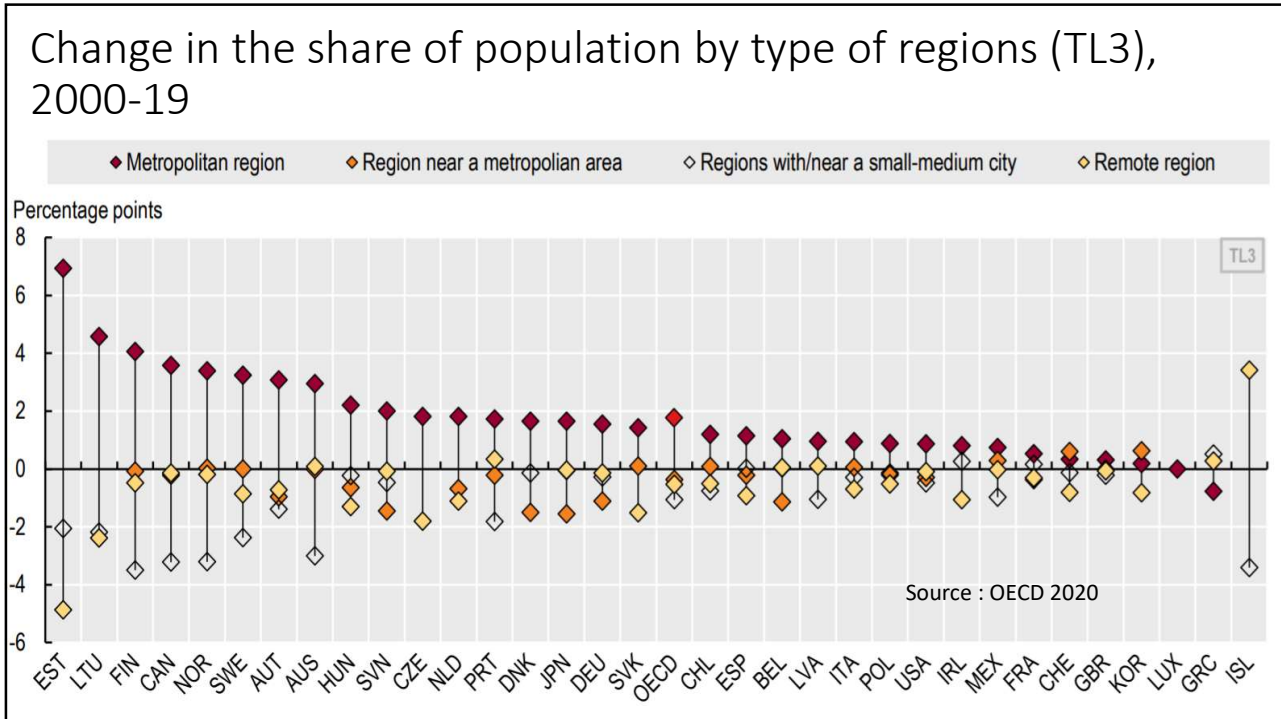
8



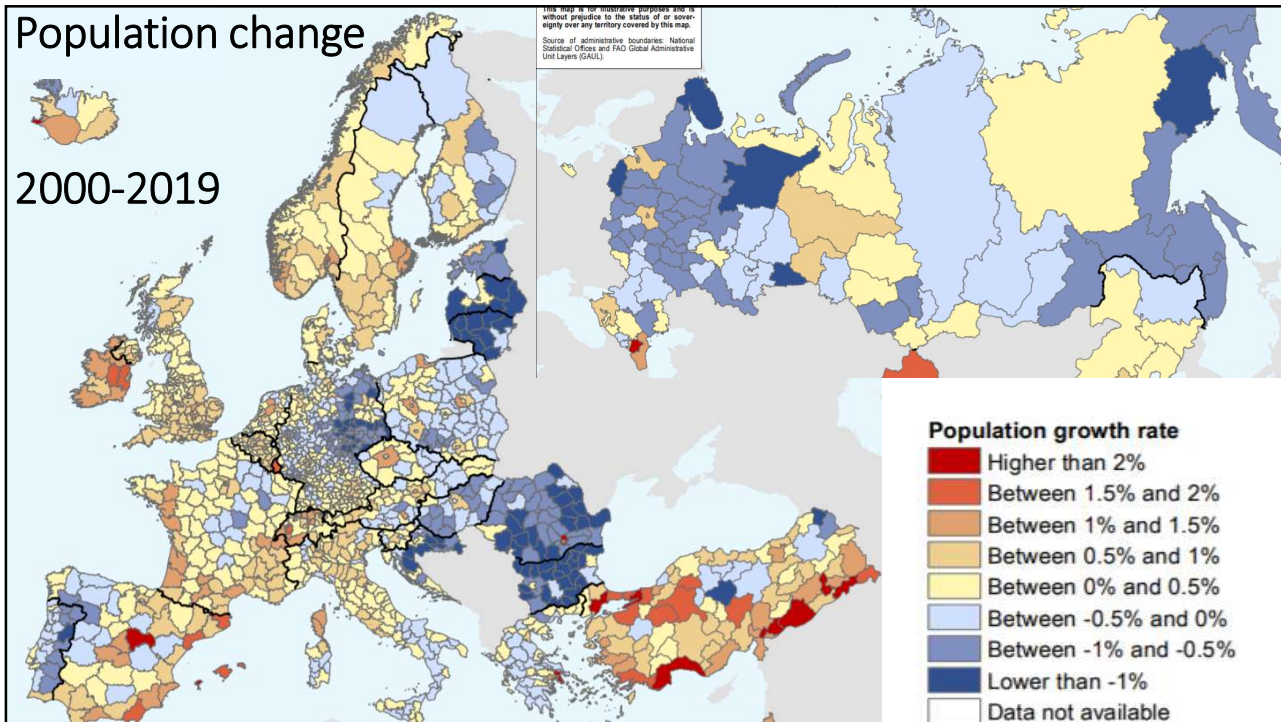
9



10

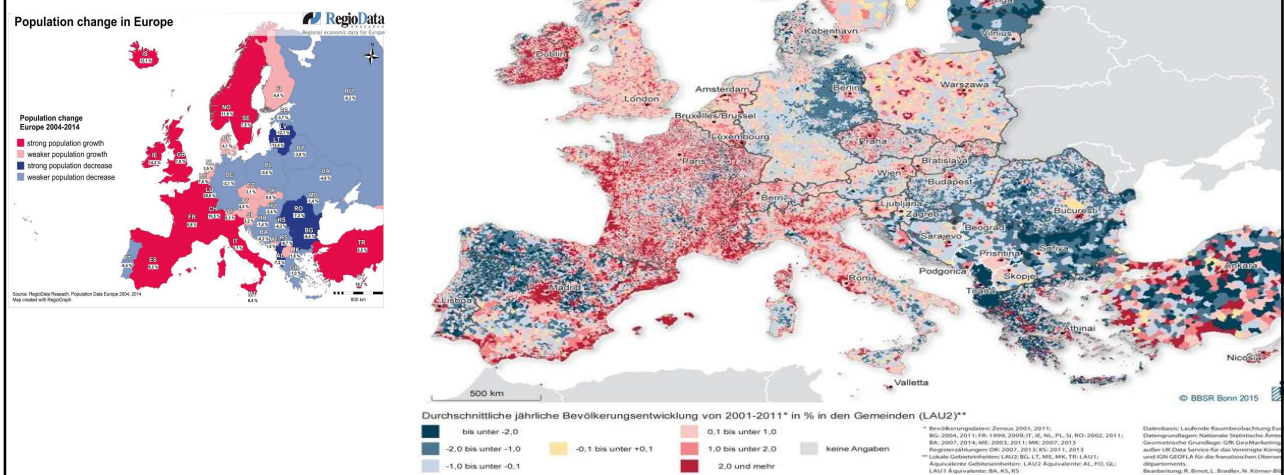


11



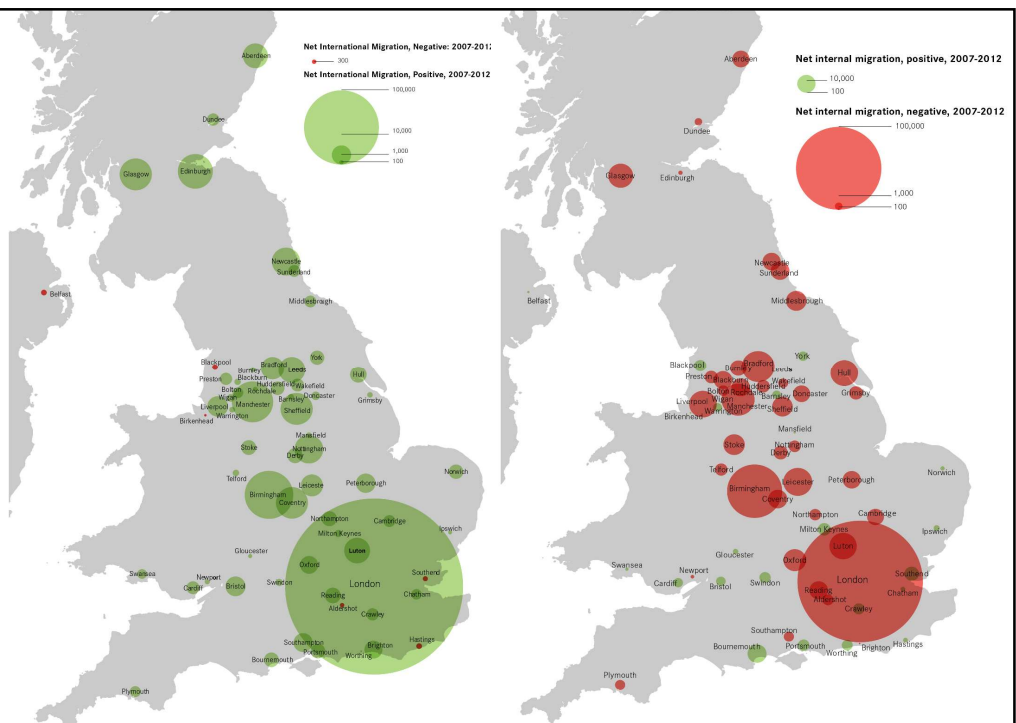
12

Population change in Europe 2001-2011, LAU2



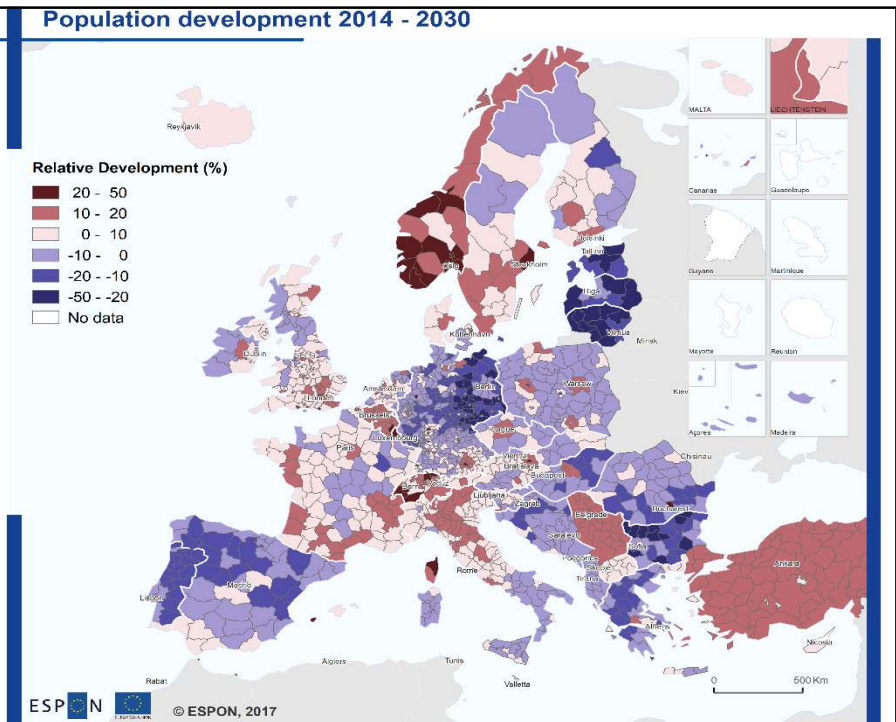
13

British cities are losing native population replaced by immigrants. International and internal migration flows 2007-2012 in the UK.



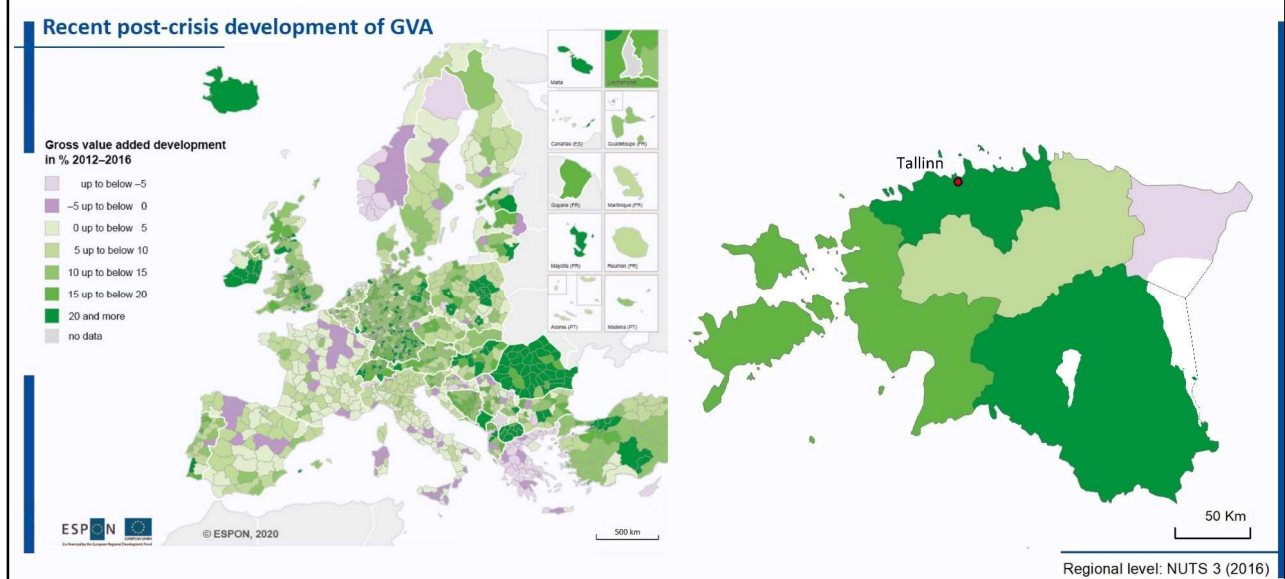
14

Therefore, do not trust linear forecast's!
 Long term migration flows probably do not continue.
 Quite a number of workers will return to their home countries.

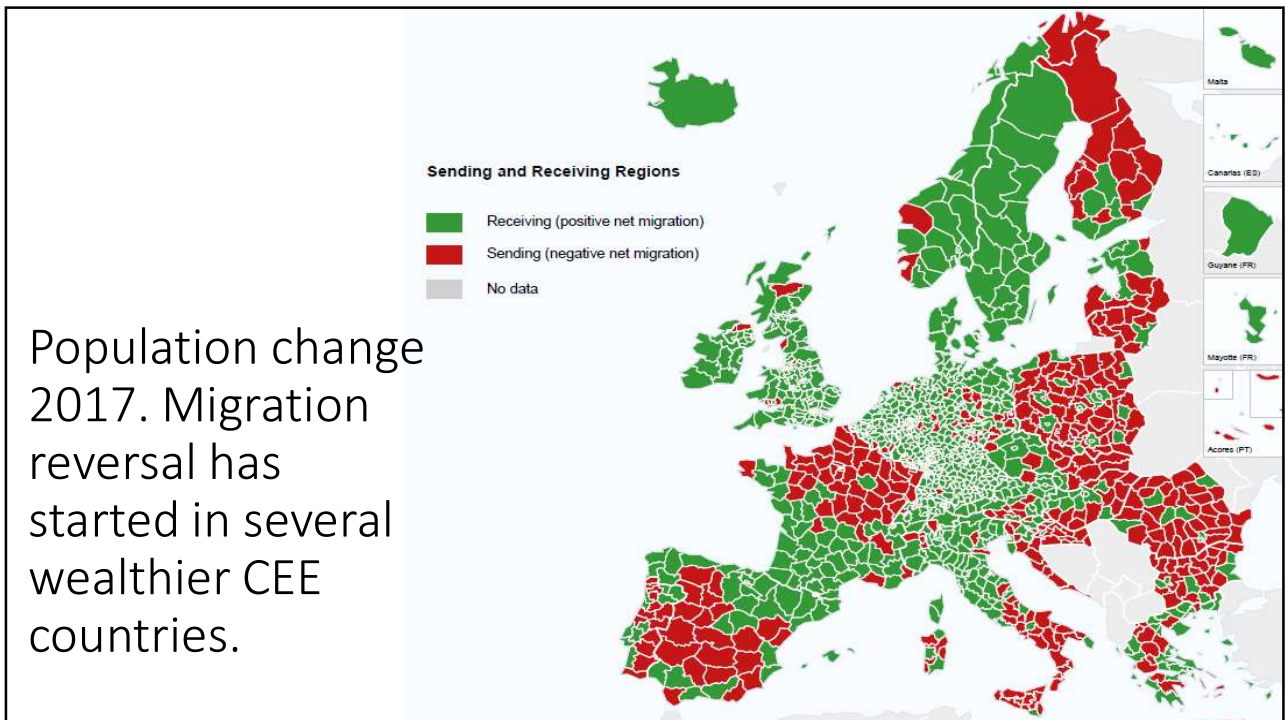


15

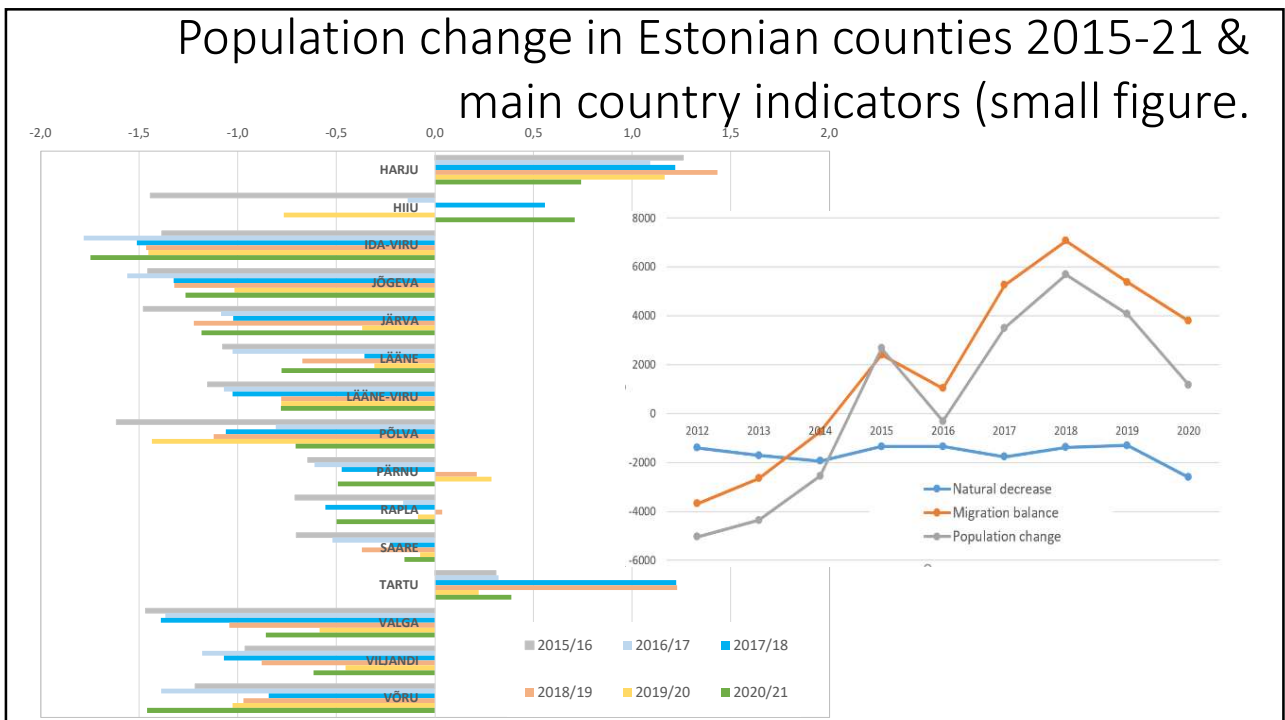
CEE countries are catching up economically – people will return to their homes



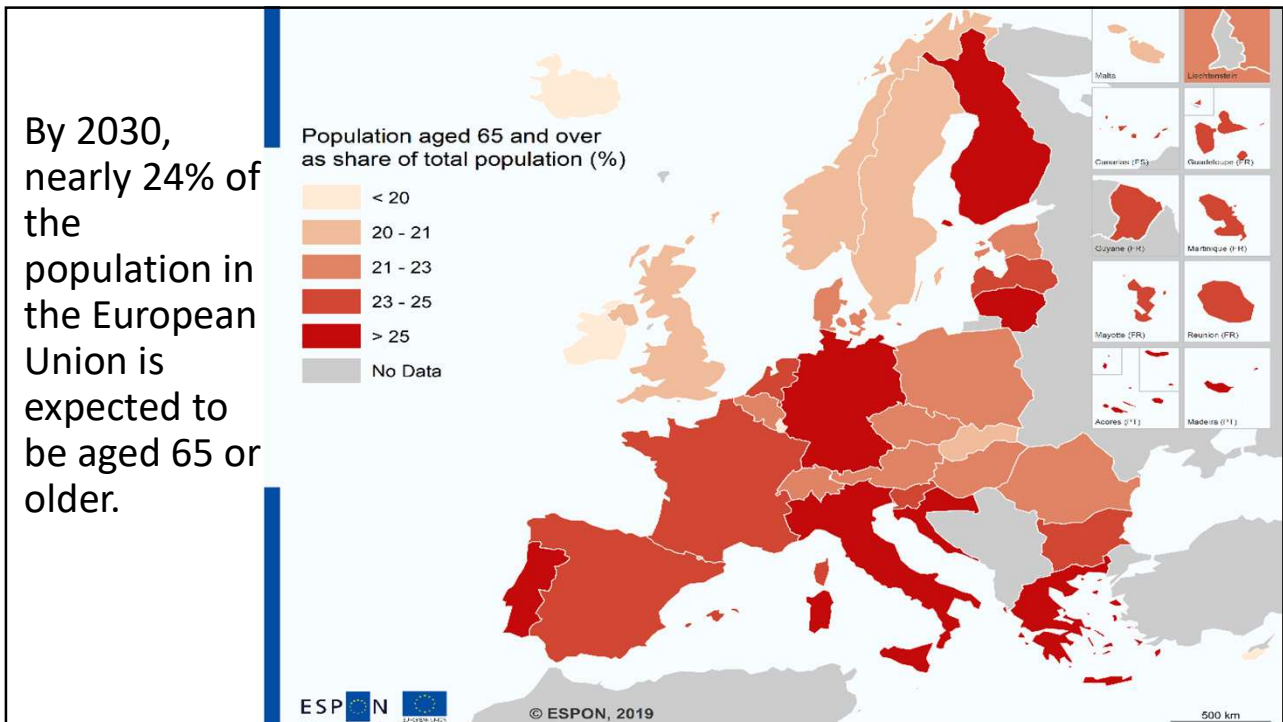
16



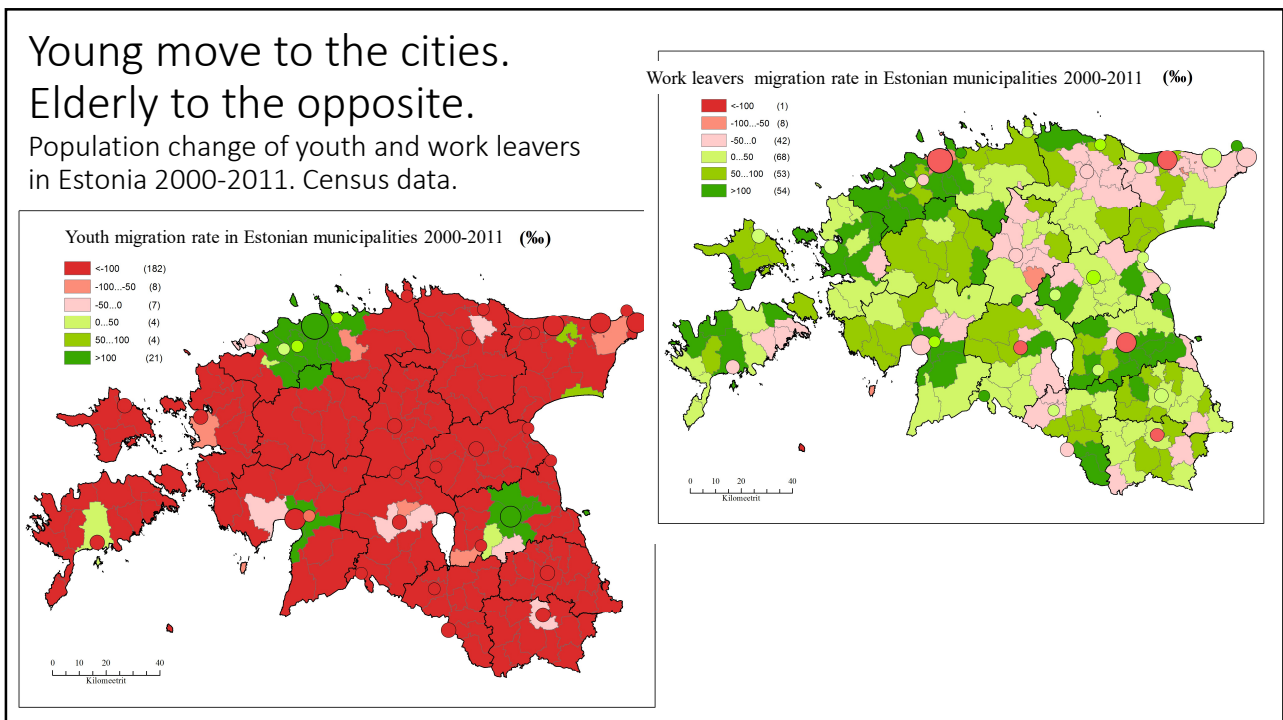
17



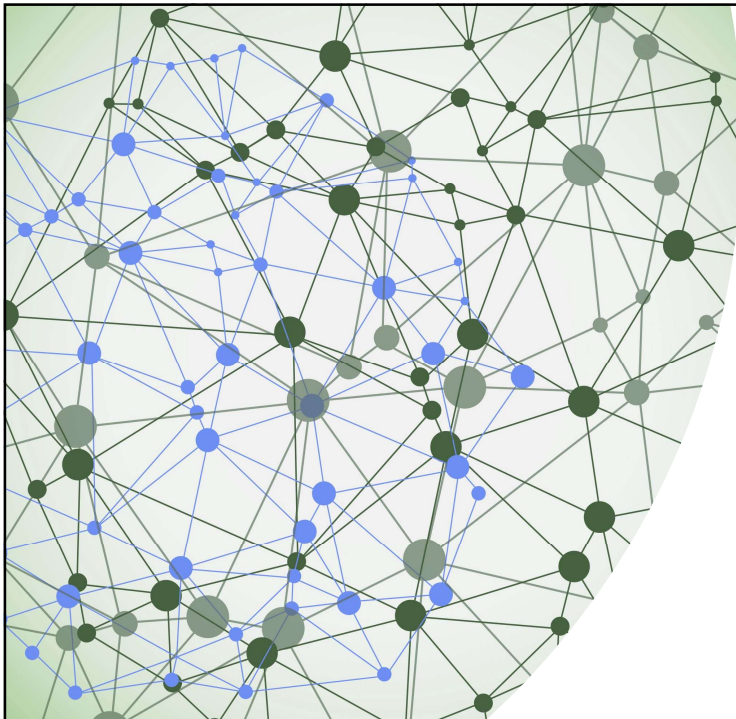
18



19



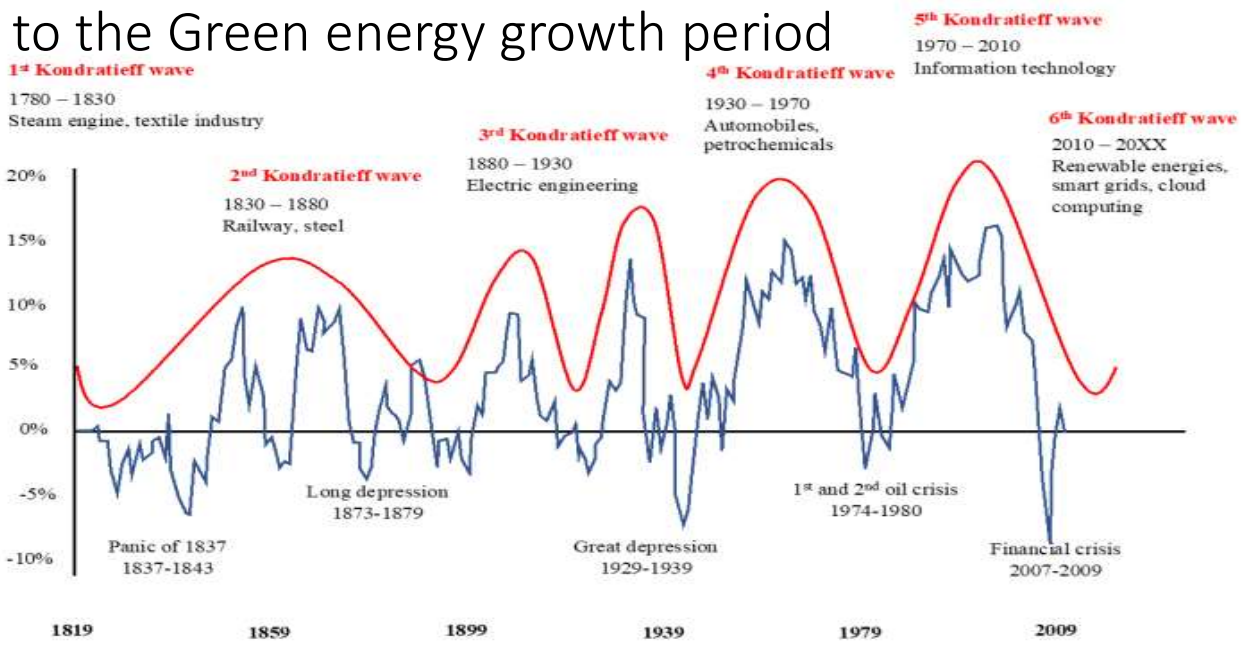
20



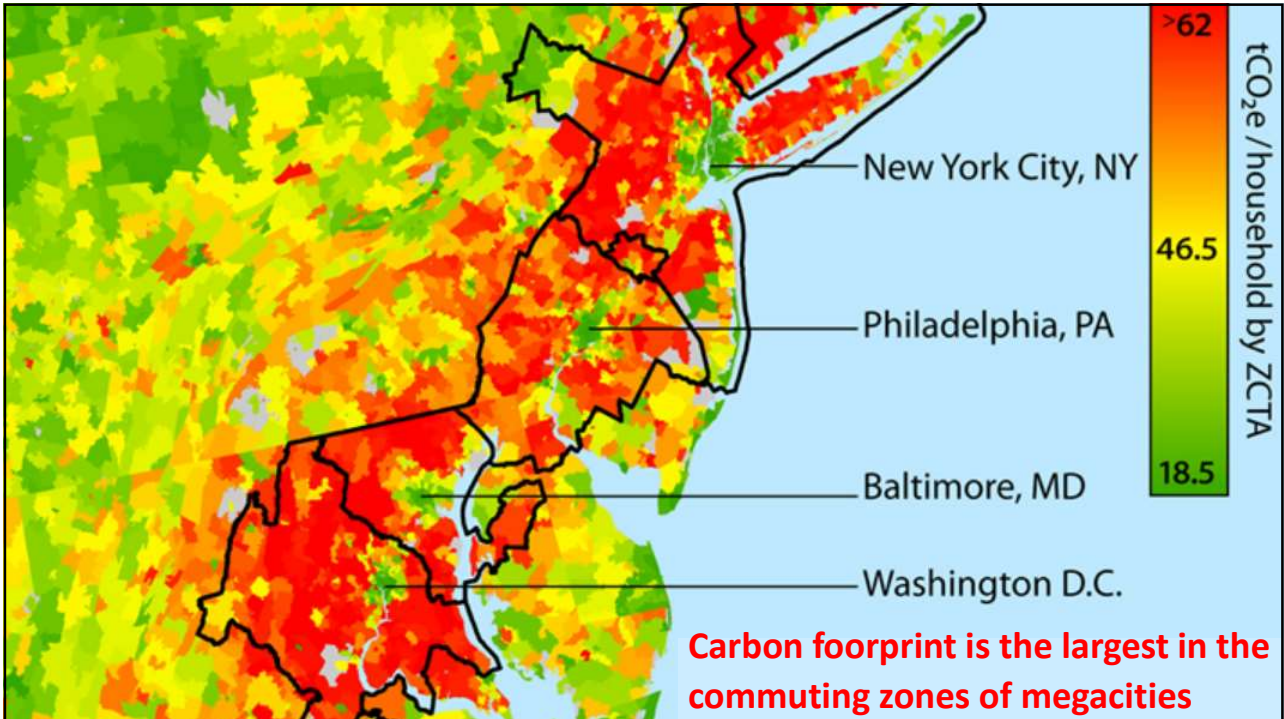
Climate change and shift to green energy production will create new industrial and population geography

21

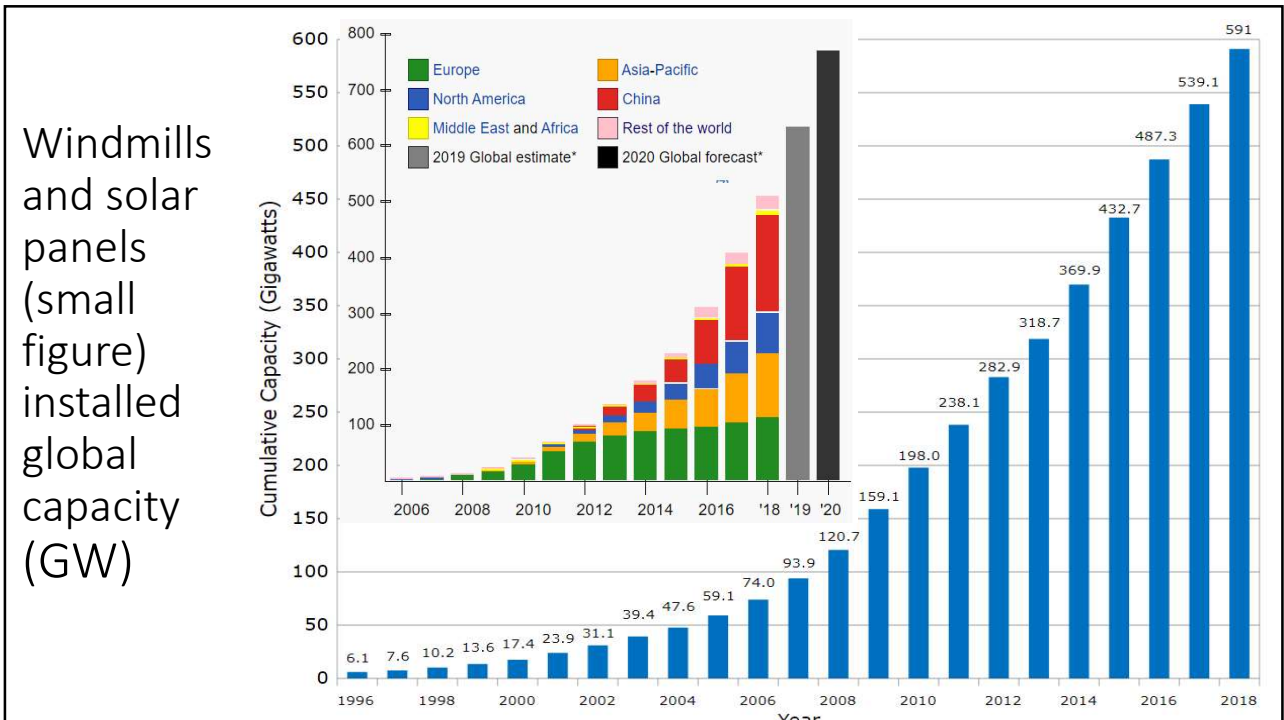
We're facing global economic recession prior to the Green energy growth period



22



23



24

Where to produce green energy here?
Centre of Tokyo

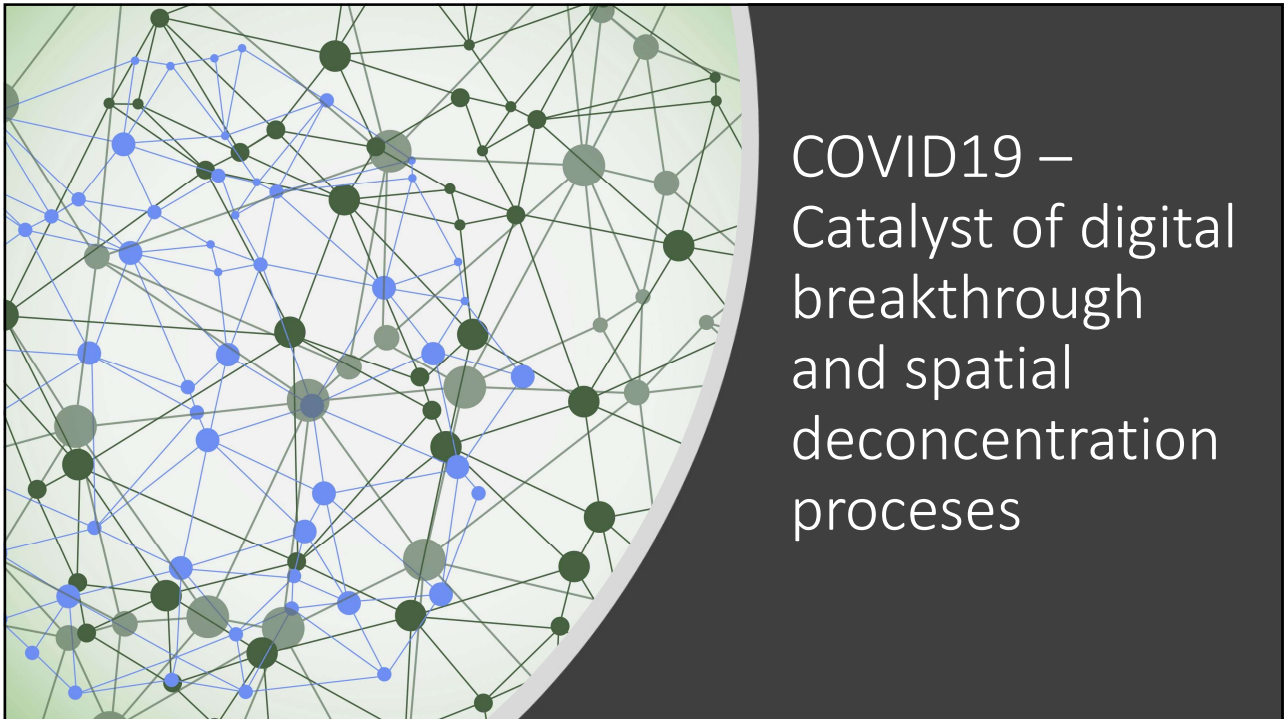


25

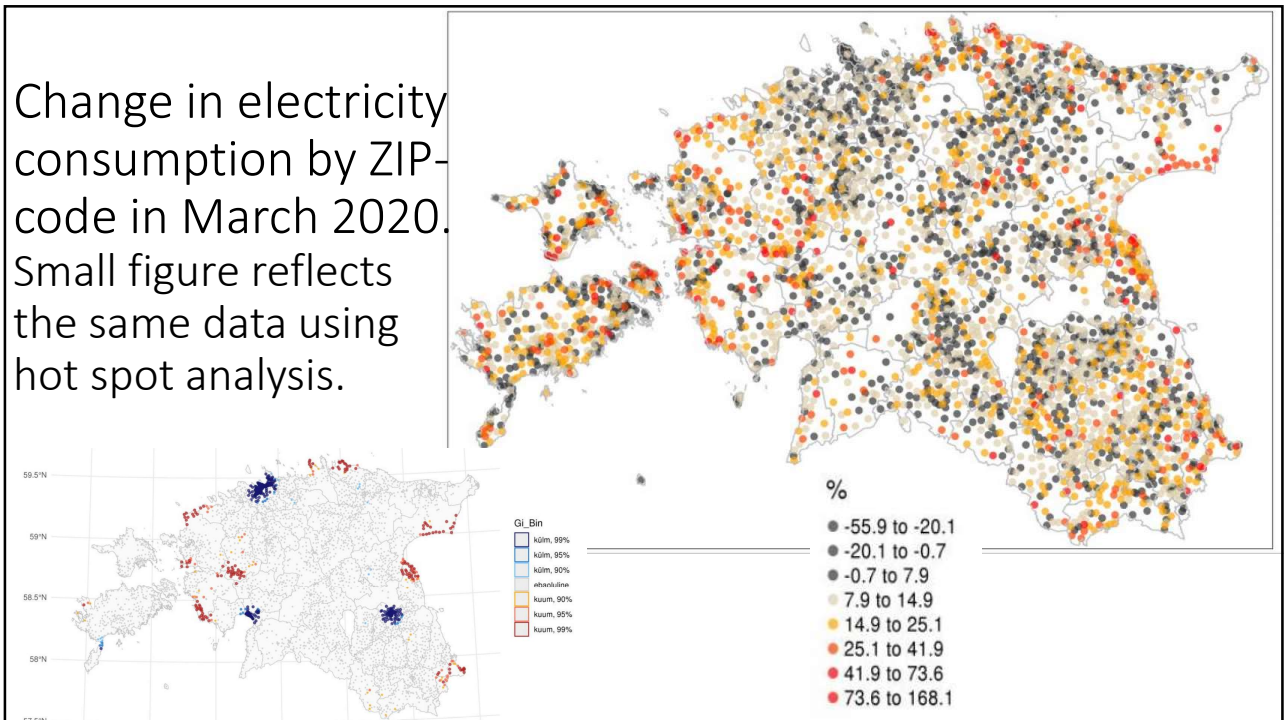
Plenty of space and biomass available
in SE-Estonia, Sõmerpalu



26



27

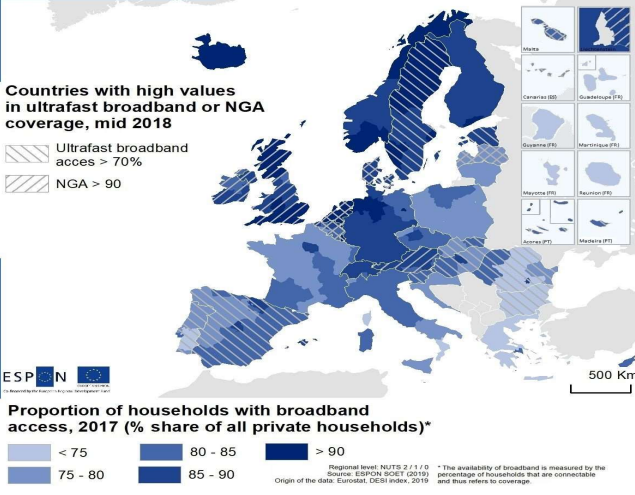


28

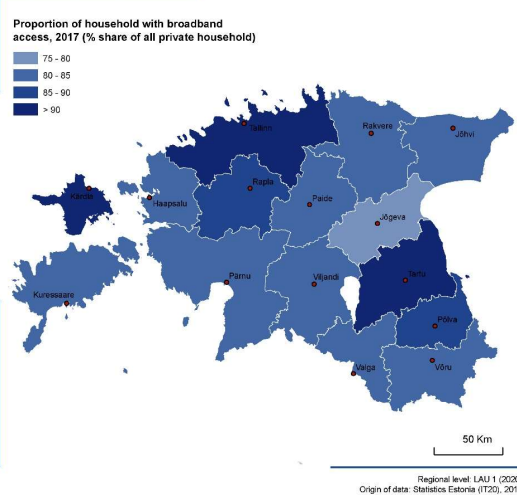
Opportunity for a distance work

Rapid evacuation of population needs second houses. But long term distance work requires good internet connections too.

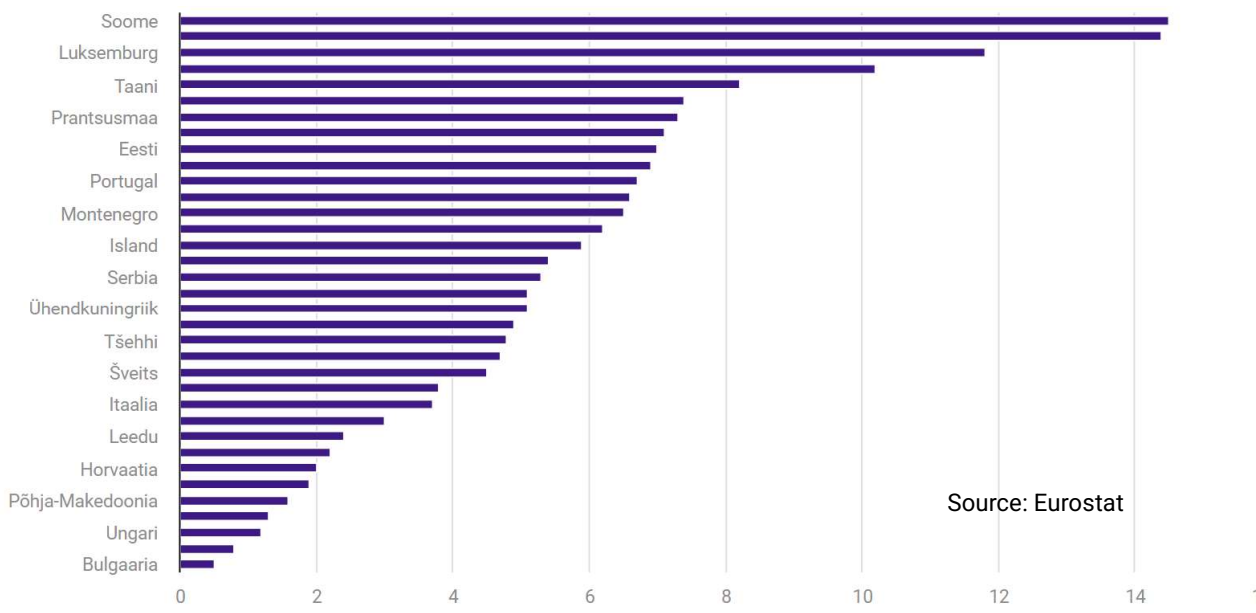
Broadband access in households and high speed internet coverage

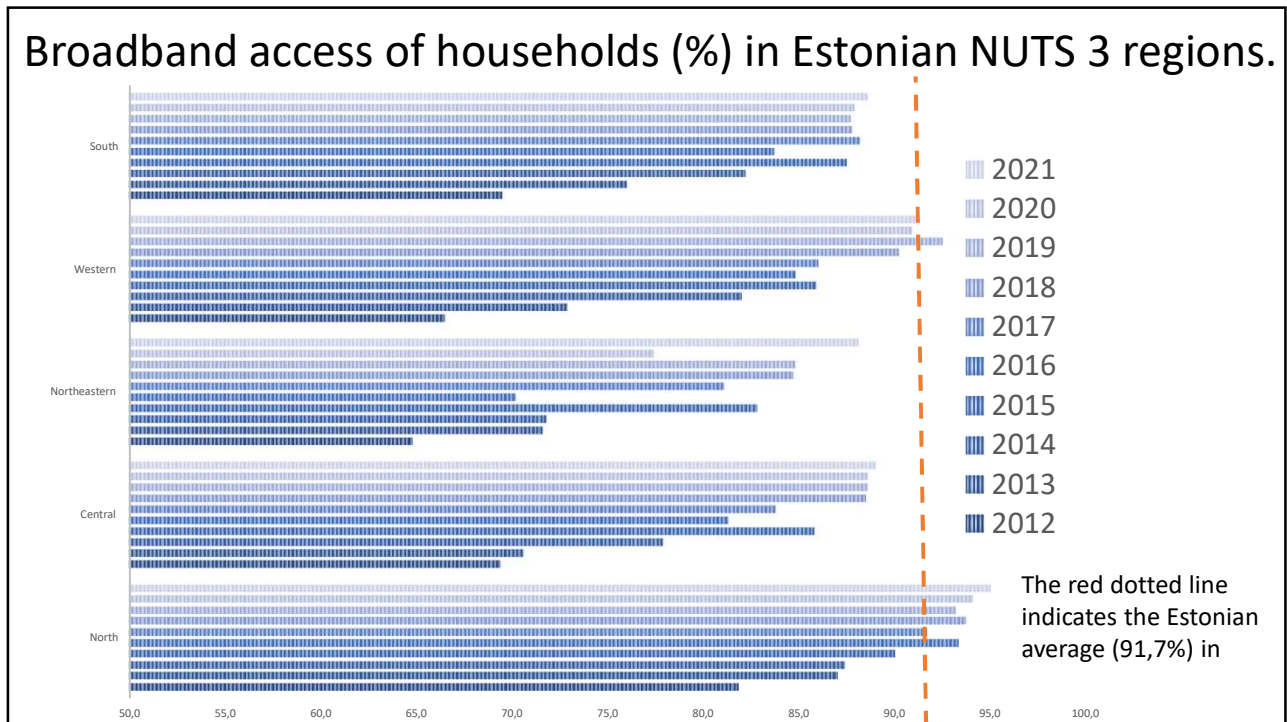


Broadband access in households

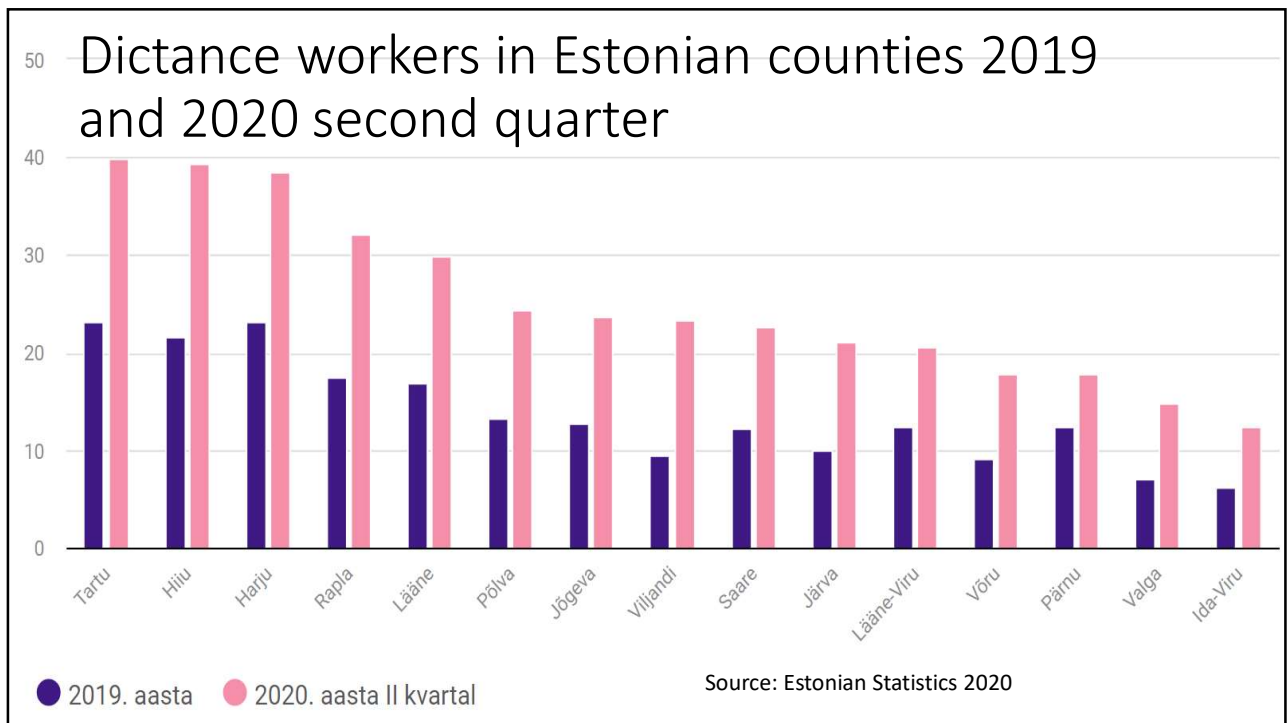


Share of distance workers in European countries (%), 2019

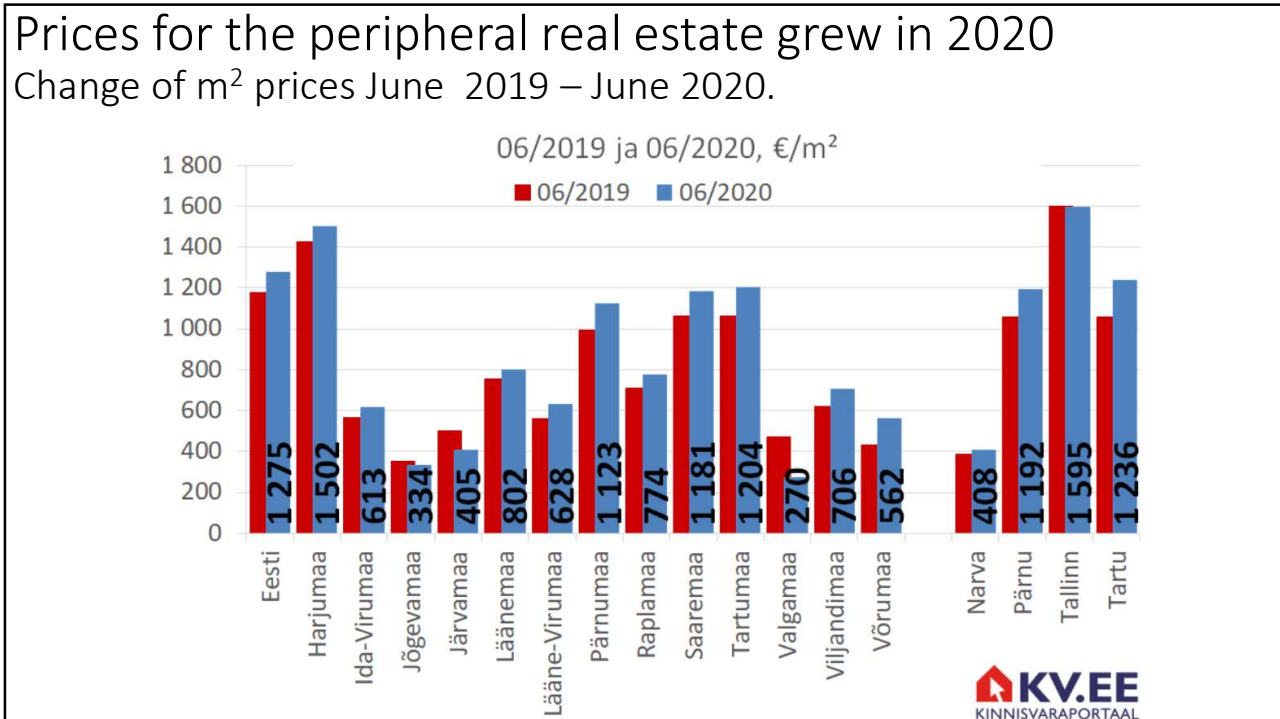




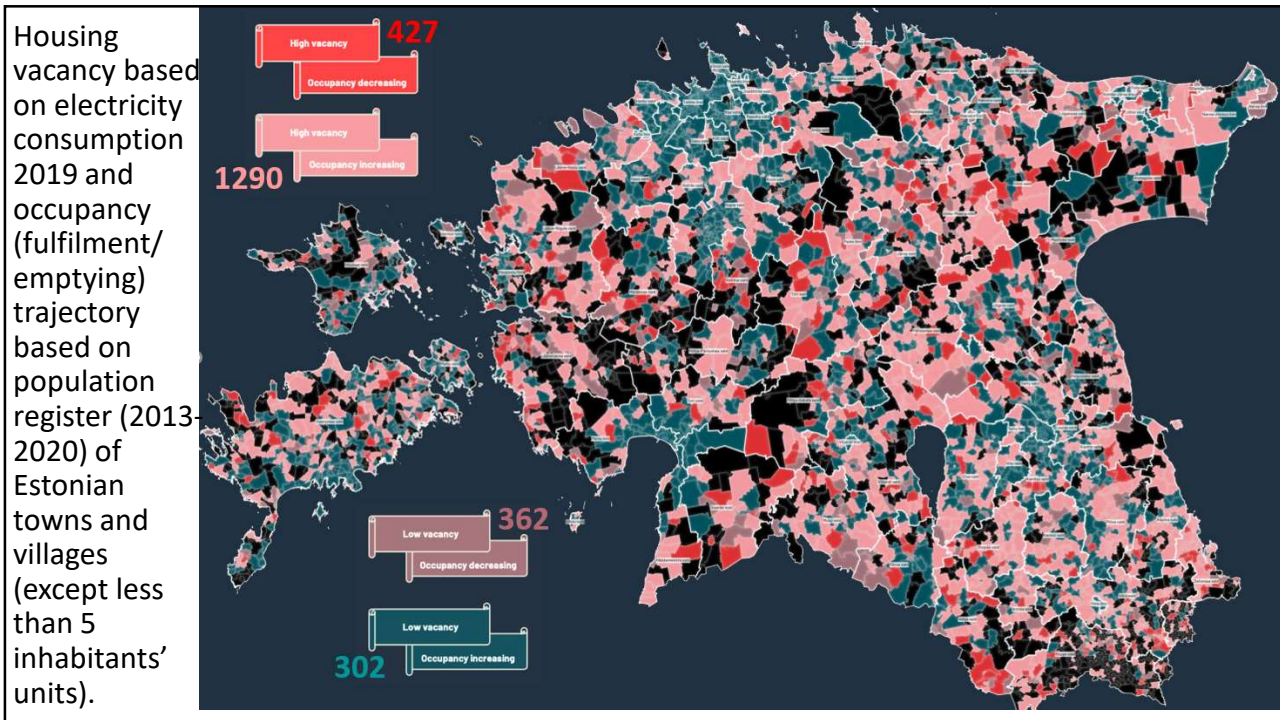
31



32



33



34

