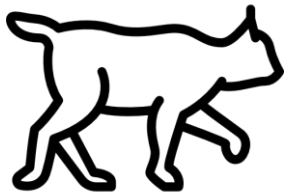
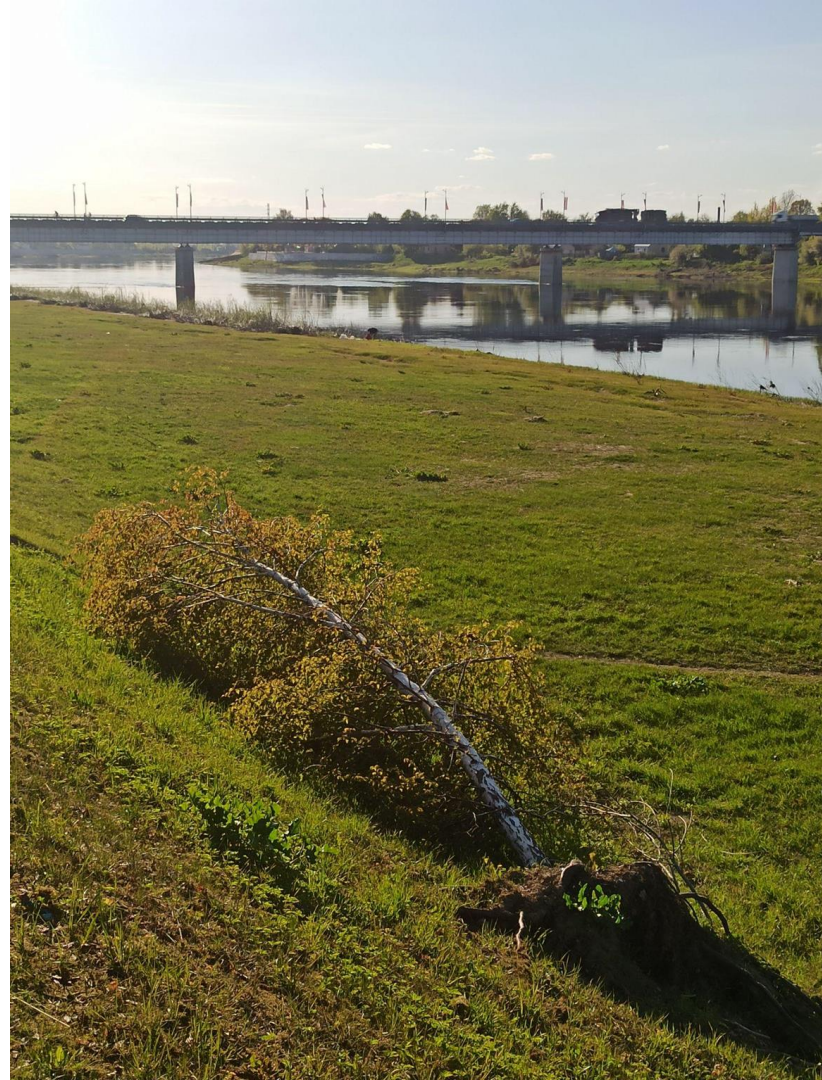


# JĒKABPILS

A place where people live...  
For now (?)



Áine Lyons  
Juuso Pelkonen  
Laurent Paul-Olivier  
Trottier  
Lilly Altmeyer  
Morics Roberts Mūrnieks



# Background and Key concepts

---

Jekabpils

Place Attachment

Ressilliency

Right-sizing



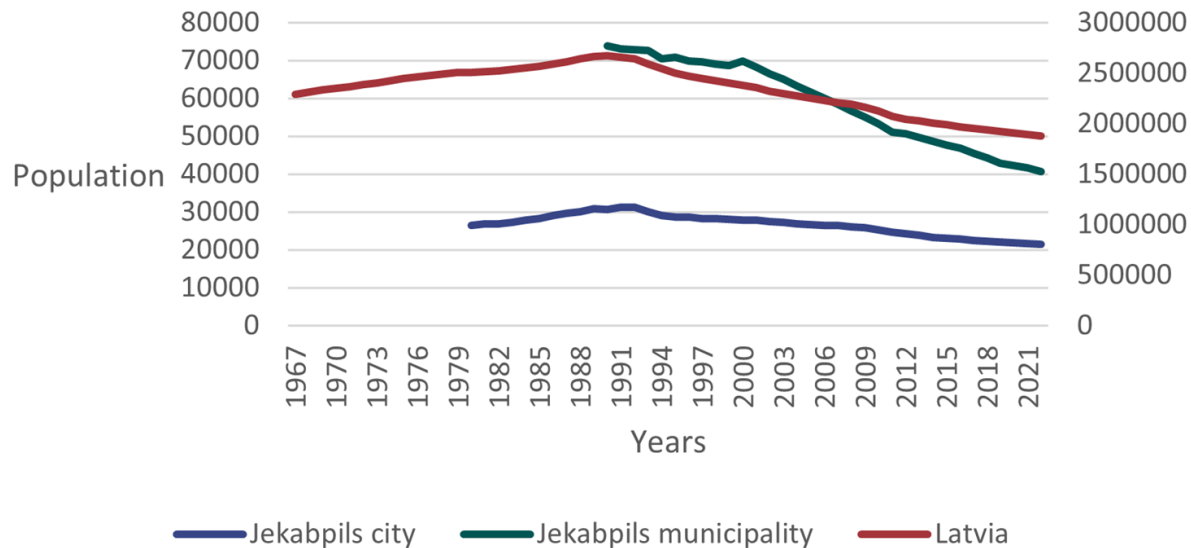
# Location

---



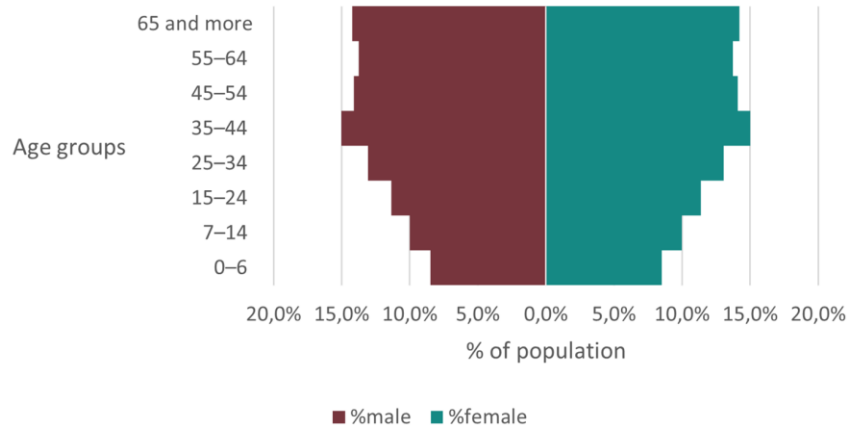
# Population change - shrinking

Population evolution of Latvia, Jekabpils and Jekabpils municipality, 1960-2022

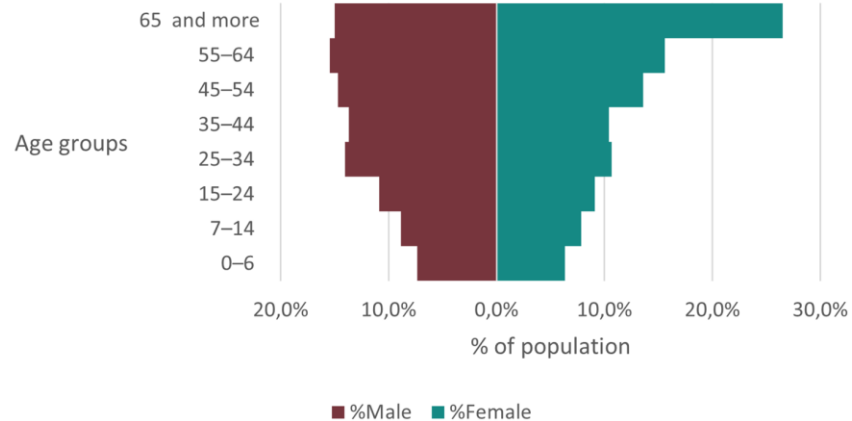


# Population change - aging

## Jekabpils city age pyramid, 2021



## Jekabpils municipality age pyramid, 2021



# Grounded theory and research questions

---

- 1) What aspects of Jēkabpils are important to community members?
- 2) How might long-term population change impact these aspects?
- 3) What strategies could be used in Jēkabpils to improve resilience to population change? (rightsizing)

# Methods



## Observations

---

Various lengths in places identified through drift mapping and interview reccom

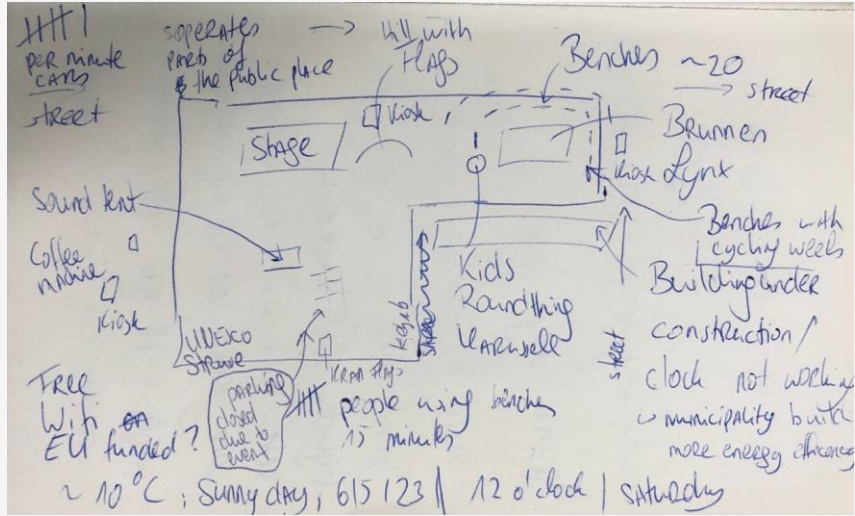
## Interviews

---

Short form, long form, questions about sense of place and places valued

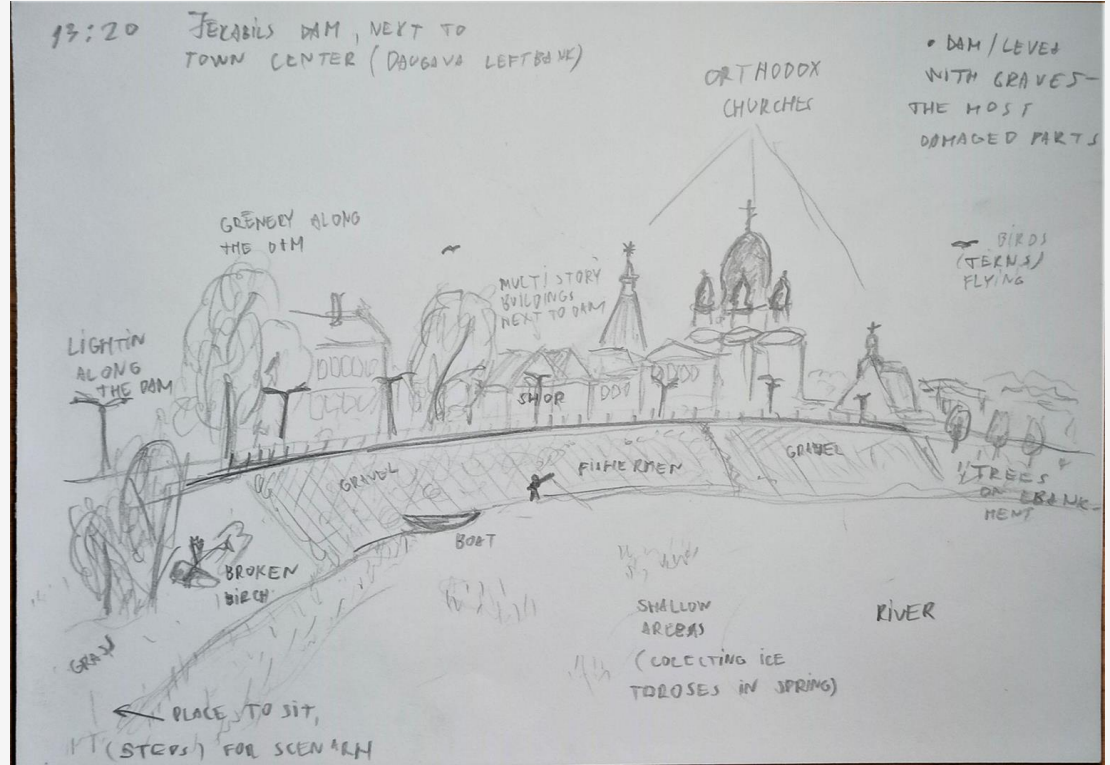


# Location Sketches





# For comparison...



# Places Valued

## Nature

The river and the  
Forest Park

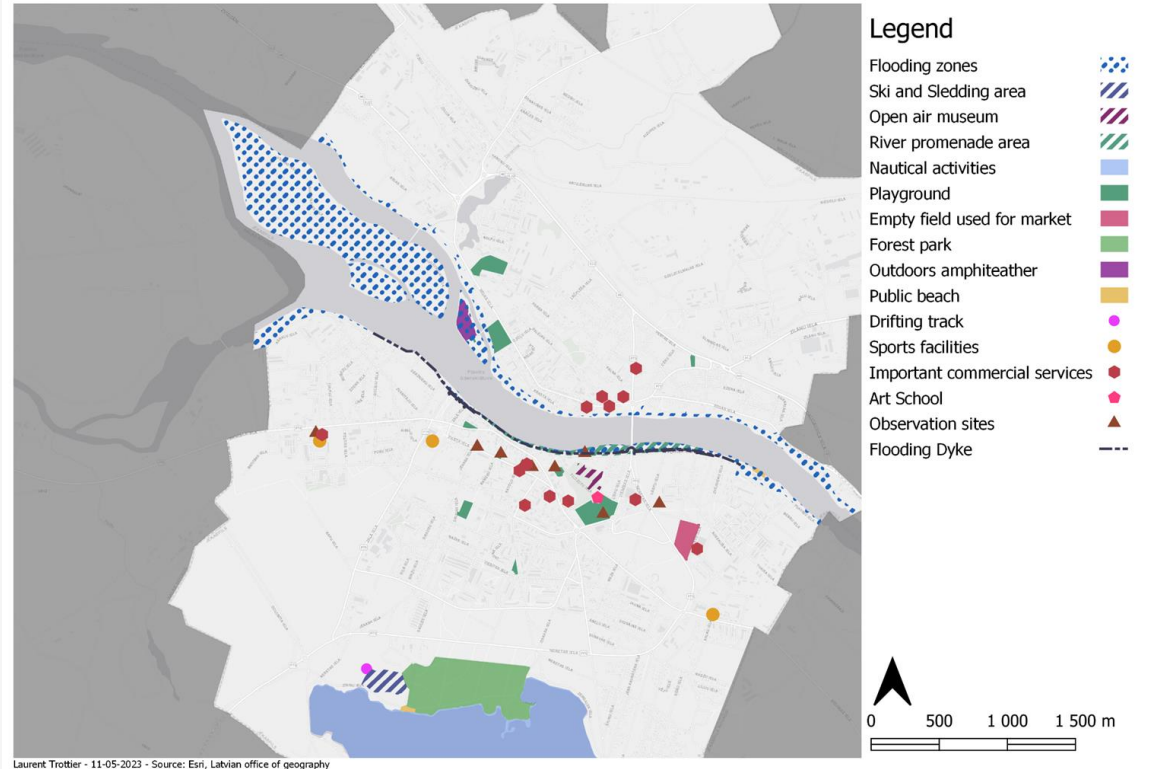
## Sports

New and old sports  
facilities

## Social Places

Work, gym, cafes,  
restaurants, SPA,  
etc.

Places of value and interest in Jēkabpils



# Themes from Interviews

---



Sense of  
Community



Access to Nature



Governance

# Themes from Interviews

---



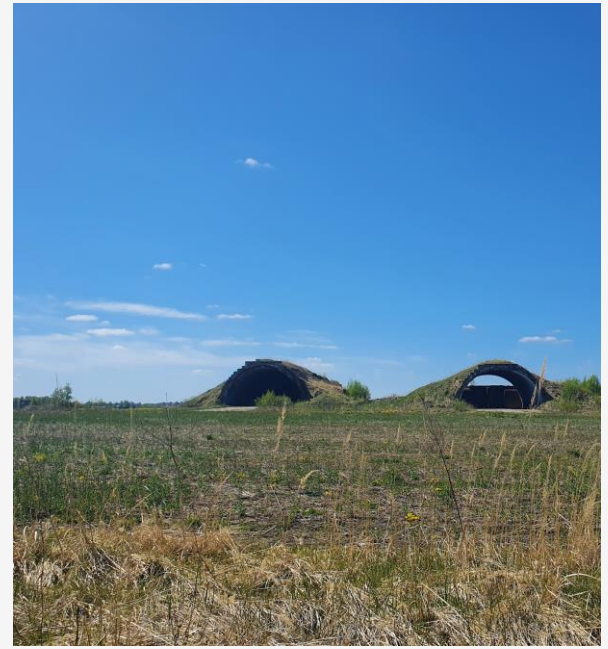
Consequences of  
Shrinkage



Perceptions of  
Shrinkage



Education  
Opportunities



## Adaptive use of places and spaces:

- Economic repurposing >>> growth orientated
- Social multi-porpoising >>> 'organic' right-sizing

# Discussion

Qualitative 'v'  
Quantitative

Perception of  
Shrinkage

Future impacts  
of Shrinkage

Rightsizing

Resilience



# Recommendations

---

To consider place attachment in a more central role in informing policy through the implementation of a formal consultation mechanism for planning of municipal affair.

To introduce rightsizing in municipal policies by prioritising repurposing land use of abandoned areas and grey sites.



# Recommendations

---



To implement continuous monitoring of the effects and perceptions of population change in interview processes to ensure understanding of the impacts of population fluctuations on the quality of life

To introduce more advanced options of studies in the technical college, focused on local needs of professionals, such as teaching, nursing and other such related occupations.



# Conclusion

---

Qualitative data shows Jēkabpils is shrinking, but is still a place with strong place attachment, strong resilience amongst population and not perception of shrinkage

Gap due to social and emotional ties from individuals to the community, positive thinking, resilience in coping with change and adversity



# Conclusion

---



Depopulation has both positive and negative impacts on rural town by creating challenges and opportunities at the same time.

Importance that local authorities take impacts of shrinkage into account and work with it

Risk of wilful blindness to an impending important decline in access to services, shops and an overall lower quality of life

**Paldies par  
uzmanību!**

Vai jums ir jautājumi panelim?