



A place based policy for depopulating areas

Josefina Syssner

The task

- Write a paper for OECD, deadline May
- Give a presentation in June
- Make suggestions for public goods provision in depopulating areas.

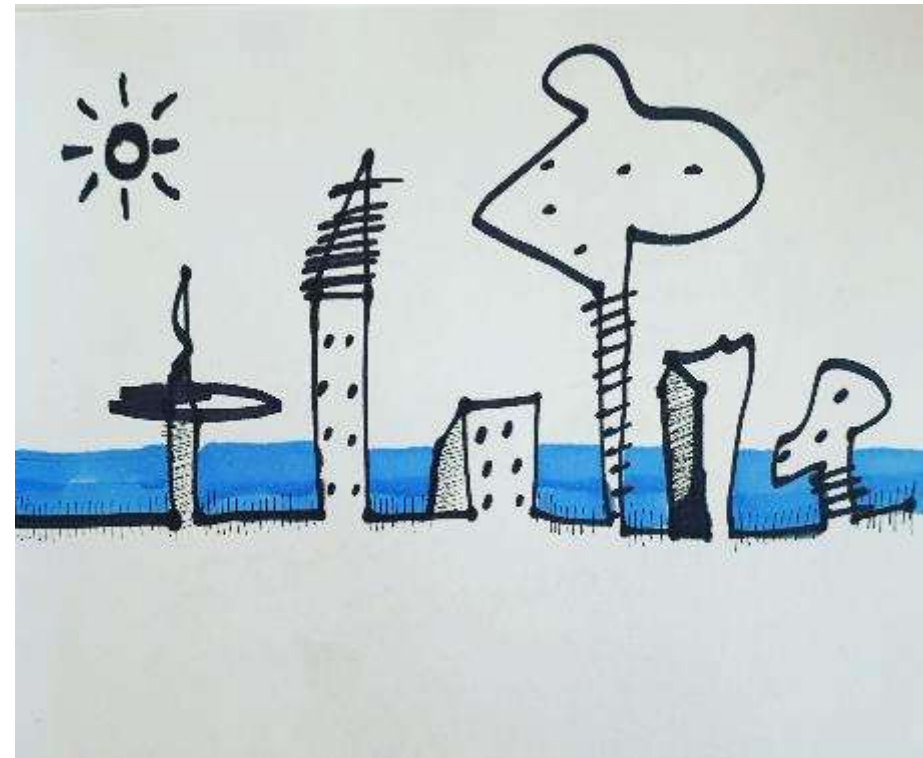
What is OECD?

- "... an international organisation that works to build better policies for better lives. Our goal is to shape policies that foster prosperity, equality, opportunity and well-being for all."



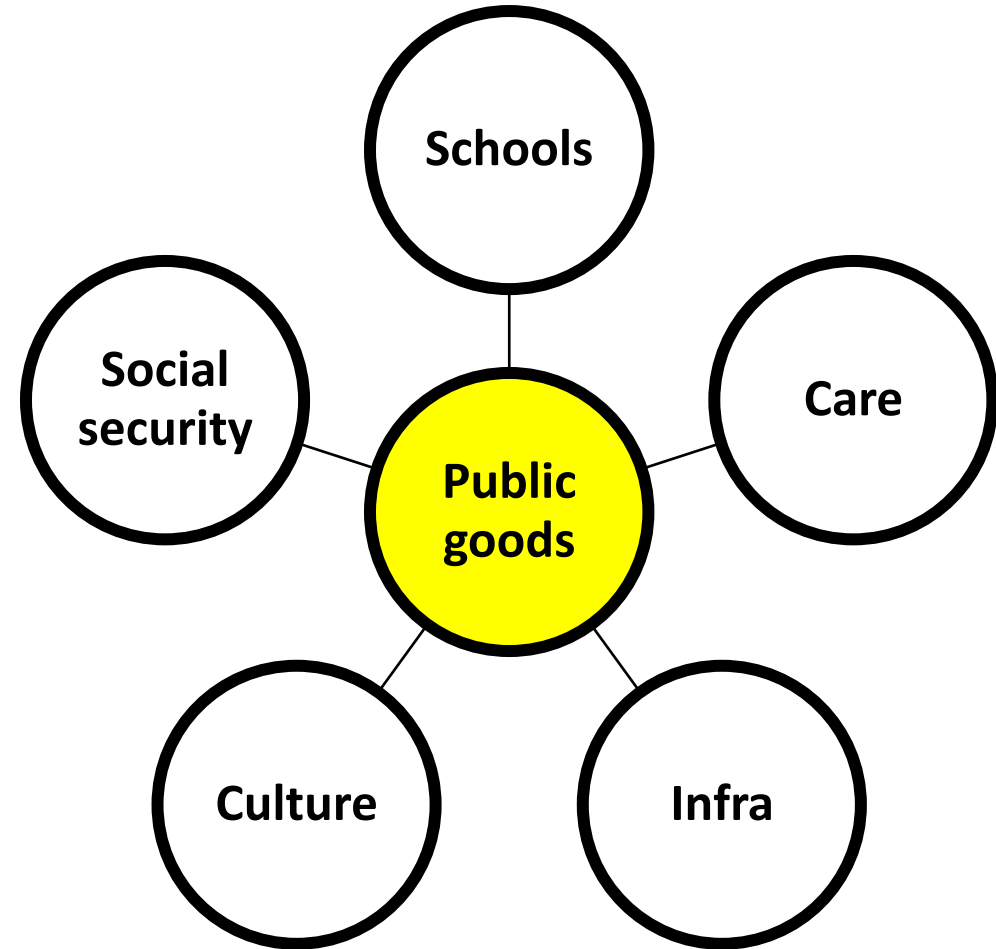
The problem identified

- Continued and sometimes dramatic population decline has presented many regions with challenges related to economic, social, and environmental sustainability.



The problem identified

- Continued and sometimes dramatic population decline has presented many regions with challenges related to economic, social, and environmental sustainability.



The aim of the paper

- This paper aims to contribute to practice and research by discussing the potential of place-based policies in public goods provision in areas facing long-term population decline.



The aim of the paper

- This paper aims to contribute to practice and research by discussing the potential of place-based policies in public goods provision in areas facing long-term population decline.



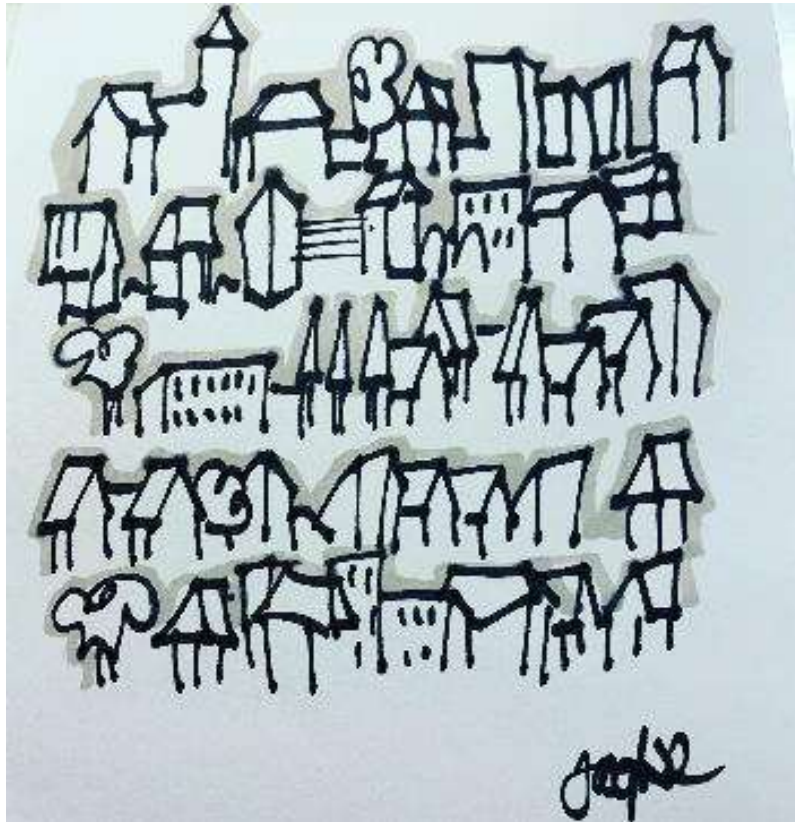
What is place-based policy?

- The *first* component is the view that interventions aiming at levelling out or balancing geographic inequalities between successful and declining areas are legitimate.
- The *second* component is the recognition that places differ in terms of institutions, capital, resources and potentials and that stakeholders at various levels must take into account and benefit from these variations.

What is place-based policy?

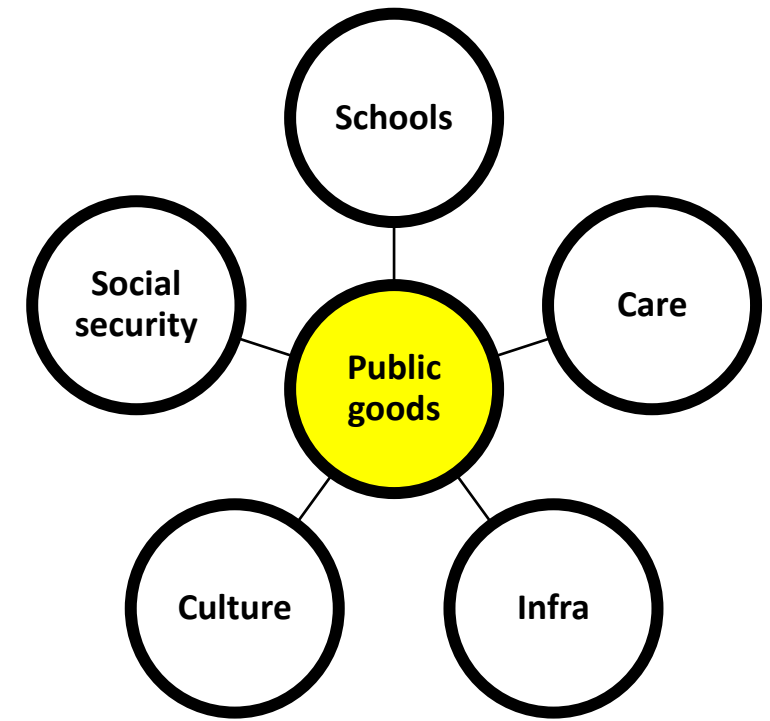
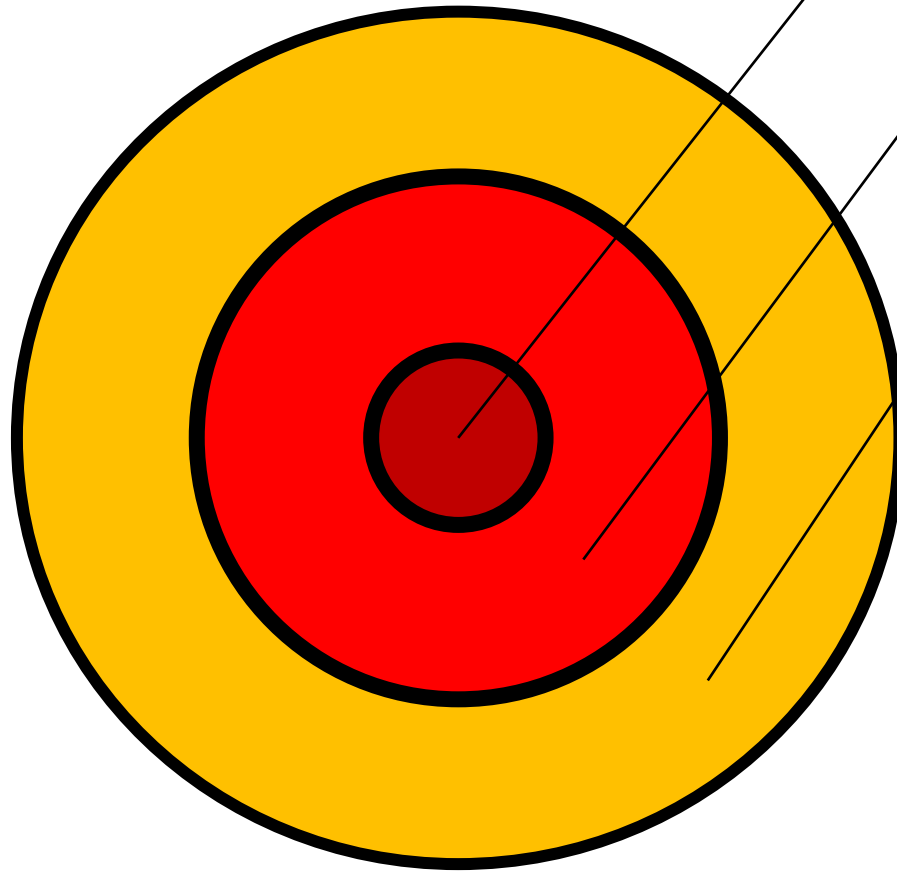
- The *first* component is the view that interventions aiming at levelling out or balancing geographic inequalities between successful and declining areas are legitimate.
- The *second* component is the recognition that places differ in terms of institutions, capital, resources and potentials and that stakeholders at various levels must take into account and benefit from these variations.

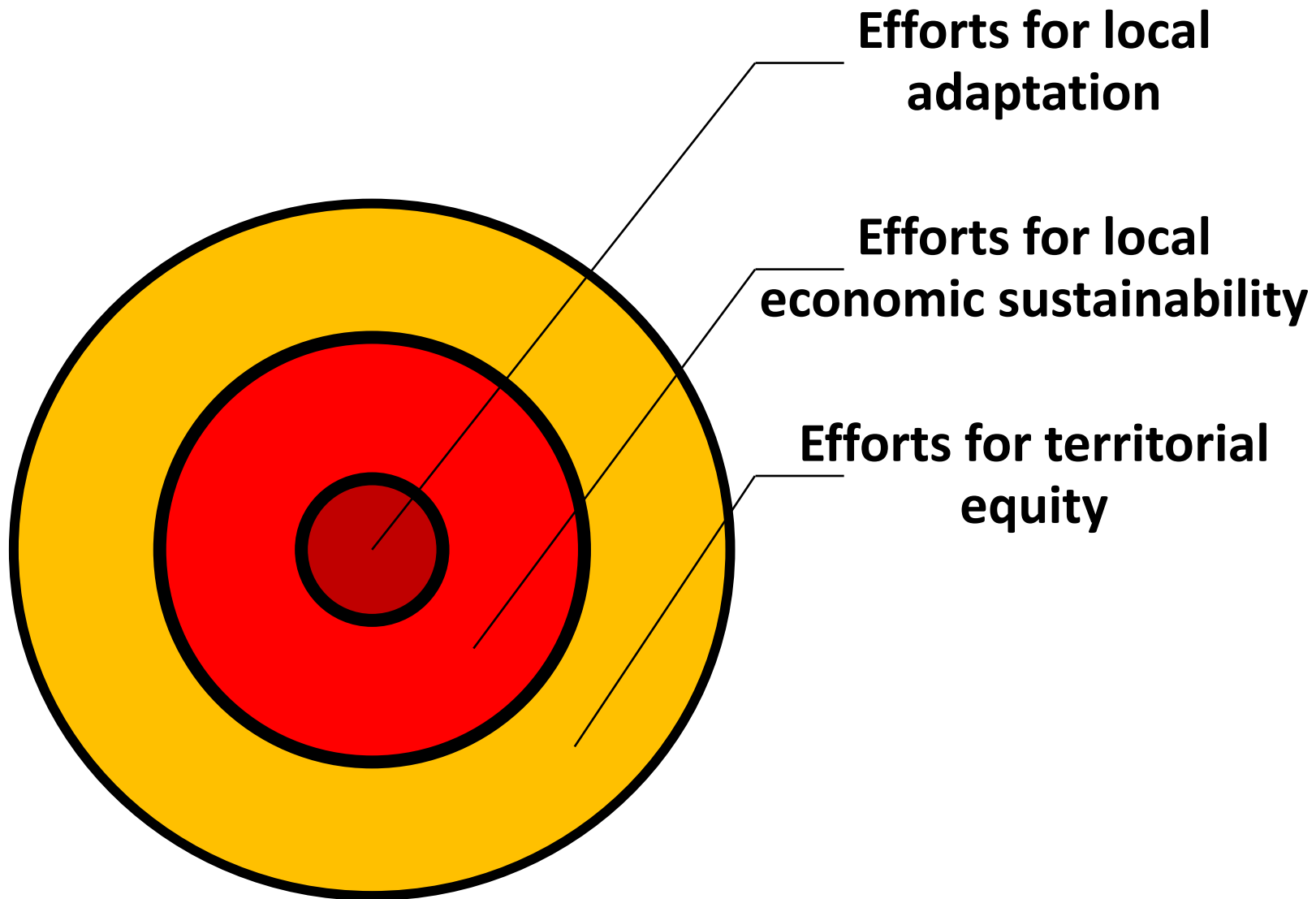
The conclusion



- ✓ Shrinking communities should develop explicit and transparent local adaptation policies,
... but such a policy must go hand-in-hand with
- ✓ state goals of territorial equity and cohesion,
and
- ✓ local policy goals of economic sustainability.

Efforts for local adaptation





Equity	Adaptation	Economic sustainability
<p>The aim is to reduce the underutilization of resources and to reduce a persistent social exclusion of specific places, in order to achieve territorial equity.</p>	<p>The aim is to adapt to new demographic and economic conditions, in order to achieve a balanced public economy and consistent quality in the provision of public goods.</p>	<p>The aim is to promote new models of local economic sustainability in depopulated areas, in order to form resilient, sustainable, and liveable communities.</p>
<p>Fiscal equalization</p>	<p>Increased taxes</p>	<p>New economic targets</p>
<p>Asymmetric implementation</p>	<p>Inter-municipal cooperation</p>	<p>The municipality as a development actor</p>
<p>Infrastructure investments</p>	<p>Adapt physical infrastructure</p>	<p>Co-location of resources</p>
<p>Support learning and innovation</p>	<p>Innovation, digitization, efficiency</p>	<p>Social procurement</p>
<p>Subsidies</p>	<p>Scale down public goods offerings</p>	<p>Less dependent on external invest</p>
	<p>Civil society cooperation</p>	<p>Multi locals as a resource</p>

Now I need your help...

- Brainstorm in groups of 2-3 around the policy measures that are pin pointed under each goal (equity – adaptation – sustainability).
- Could other policy measures be added? What have I over-looked?
- Write down keywords on the whiteboards





Thank you!

josefina.syssner@liu.se